



*Manage, Automate and Optimize
Business Processes.*

Adeptia Server 4.9

Installation Guide

Version 1.2

Release Date March 10, 2009

Adeptia Inc.
443 North Clark Ave,
Suite 350
Chicago, IL 60610, USA
Phone: (312) 229-1727

Copyright

Copyright © 2000-2008 Adeptia, Inc. All rights reserved.

Trademarks

The Adeptia™ is a trademark of Adeptia, Inc.


Statement of Conditions

Adeptia, Inc. provides this publication "as is" without warranty of any kind, either express or implied. In no event shall Adeptia be liable for any loss of profits, loss of business, loss of use or data, interruption of business, or for indirect, special, punitive, incidental, or consequential damages of any kind.

No part of this work covered by copyright herein may be reproduced in any form or by any means—graphic, electronic or mechanical—including photocopying, recording, taping, or storage in an information retrieval system, without prior written permission of the copyright owner.

This publication is subject to replacement by a later edition. To determine if a later edition exists, contact www.adeptia.com.

Document Conventions

Convention	Description
Text Matter in font Verdana and font size 9 point.	Explains the installation guide.
Text matter	Click on link to reach target.
	Note:

Abbreviations Used

Abbreviation	Description
JRE	Java Runtime Environment
IE	Microsoft Internet Explorer

Contact Information

In case of any queries, please contact us at:

Contact For	Email ID
Sales	sales@adeptia.com
Support	support@adeptia.com

For latest updates and information, please visit us at www.adeptia.com .

Table of Contents

1	OVERVIEW.....	4
2	PRE-INSTALLATION REQUIREMENTS.....	5
	PLATFORM AND MEMORY REQUIREMENTS	5
	DATABASE REQUIREMENTS	6
	SOFTWARE REQUIREMENTS	6
3	INSTALLING ADEPTIA SERVER	8
4	UPDATING LICENSE.....	20
5	GETTING STARTED WITH ADEPTIA SERVER	22
	STARTING ADEPTIA SERVER KERNEL AND WEB RUNNER ON WINDOWS	22
	STARTING ADEPTIA SERVER KERNEL AND WEBRUNNER ON LINUX.....	23
	LOGIN INTO ADEPTIA SERVER.....	24
6	UNINSTALLING ADEPTIA SERVER.....	27
7	ABOUT ADEPTIA INC.	30

1 OVERVIEW

This document provides guidelines for installing Adeptia Server on Microsoft Windows or Linux operating system.

It explains all tasks required to install the application. These are outlined as:

- [Conforming to all pre-installation requirements](#)
- [Installing Adeptia Server](#)
- [Starting Adeptia Server Kernel and WebRunner](#)
- [Logging in the Adeptia Server](#)
- [Uninstalling Adeptia Server](#)

2 PRE-INSTALLATION REQUIREMENTS


This section describes the pre-requisites to be met before installing Adeptia Server:

- [Platform and Memory Requirements](#)
- [Database Requirements](#)
- [Software Requirements](#)

PLATFORM AND MEMORY REQUIREMENTS

The platform requirements for installing Adeptia Server are outlined as:

- Intel Pentium IV or higher PC with Microsoft Windows or Linux operating system installed, with minimum of 512 MB RAM. However, it is recommended to use 1GB RAM.

	<p>Adeptia Server is certified for following operating systems:</p> <ul style="list-style-type: none">▪ Windows 2000▪ Windows 2003▪ Windows XP▪ Windows Vista▪ Red Hat Linux▪ Suse Linux▪ Solaris
--	---

- User must have administrative rights on the machine, where Adeptia Server is to be installed.
- Hard Disk space of 500 MB.

These are merely approximate figures. The actual RAM and hard disk space required for running Adeptia Server would depend on various factors such as the *number of services running on the node*, the *complexity of the services deployed on the node* and *CPU usage* required by these services. The *anticipated data flow* and *performance expected from the system* also determine the RAM and hard disk requirements.

Additionally, since Adeptia Server is purely a Java product, all its components are compatible with platforms supporting Java (JVM) versions 1.5 or later.

DATABASE REQUIREMENTS

The database requirements for installing Adeptia Server are outlined as:


- Pre-bundled database HSQLDB, or other databases such as SQL server.
- If SQL Server database is installed, then the database user must have permissions to create and access tables. For example, a SQL account user must have 'Owner' permissions, Create, Update and Delete permissions.

SOFTWARE REQUIREMENTS

For installing and running Adeptia Server, there is no additional software required.

Software requirements for client machine, which you will use to access Adeptia Server, are outlined as:

- Internet Explorer 6 or above (Java enabled) browser installed on the PC.

	Internet Explorer 6 and 7 are the only certified web browser for Adeptia Server.
---	--

- Acrobat Reader to view PDF files generated by Process Designer and Data Mapper.
- Java Runtime Environment (JRE)

Adeptia Server has two major components:


- Server End
- Client End

The JRE dependency of the Adeptia Server components is listed in the table below:

Table 2.1 : JRE Dependency of Adeptia Server Components

Adeptia Server Component	Applet	JRE Dependency
Server End	Adeptia Server Kernel	JRE 1.5 or above (JRE 1.5 is already bundled with Adeptia Server)


Client End Applets	Process Designer	JRE 1.5 or above
	Data Mapper	JRE 1.5 or above
	Monitoring	JRE 1.5 or above
	WebDAV	JRE 1.5 or above
	Custom Report	JRE 1.5 or above
	Dashboard	JRE 1.5 or above

	<p>In case JRE 1.4.2 or JRE 1.5 is installed on the client-end PC, then the applets will automatically download JRE 1.6 from the JAVA website.</p> <p>The <i>Pop-Up Blocker</i> needs to be disabled in the web browser, in order to open the applets. By default, the <i>Pop-Up Blocker</i> is enabled.</p>
---	--

3 INSTALLING ADEPTIA SERVER

Steps to install Adeptia Server:

1. If you are installing Adeptia Server on Windows, make sure that you are logged in as “Administrator” or any other user with administrative rights.
If you are installing Adeptia Server on Linux, make sure that you are logged in as “root” user.
2. Unzip the **AdeptiaServer<Version>_<OS>.zip** file and save its contents in a directory. Here <Version> is the version of Adeptia Server and <OS> is the operating system (e.g. Windows or Linux).
3. Double-click the file **install.exe** from directory where you have extracted the ZIP file. The Welcome screen is displayed (see Figure 3.1).

	<ul style="list-style-type: none">▪ If you are installing Adeptia Server on Linux machine, execute install.bin file using following command: <pre>./install.bin</pre>▪ If you are installing Adeptia Server from install.jar file then run the following command: <pre>java -jar install.jar</pre>
---	---

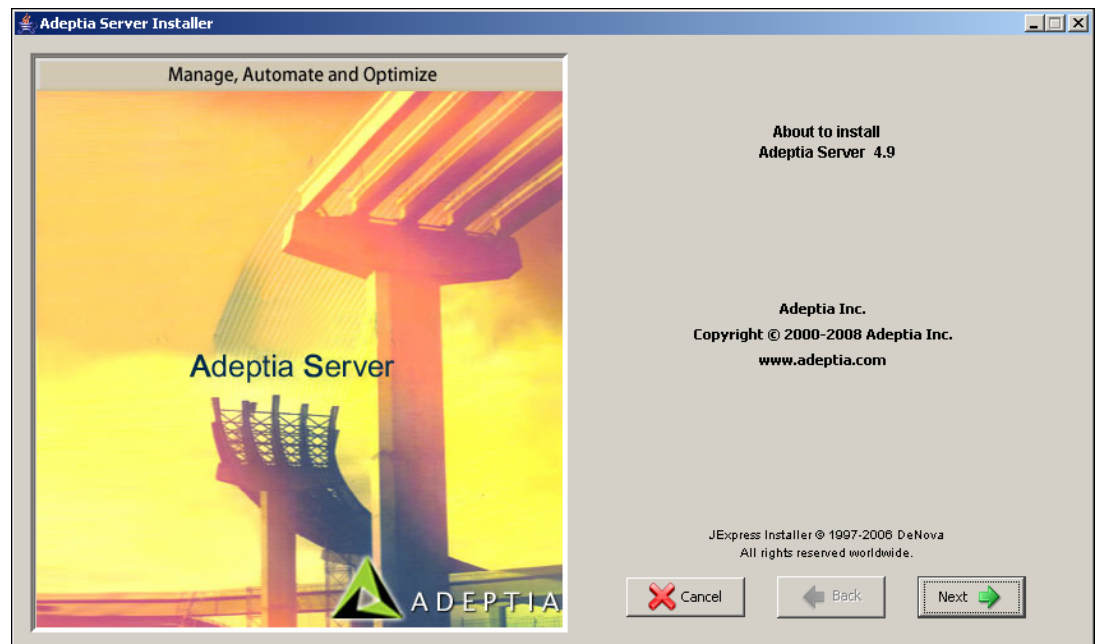


Figure 3.1: Welcome Screen

4. Click **Next** button. The End User License Agreement screen is displayed (see Figure 3.2).

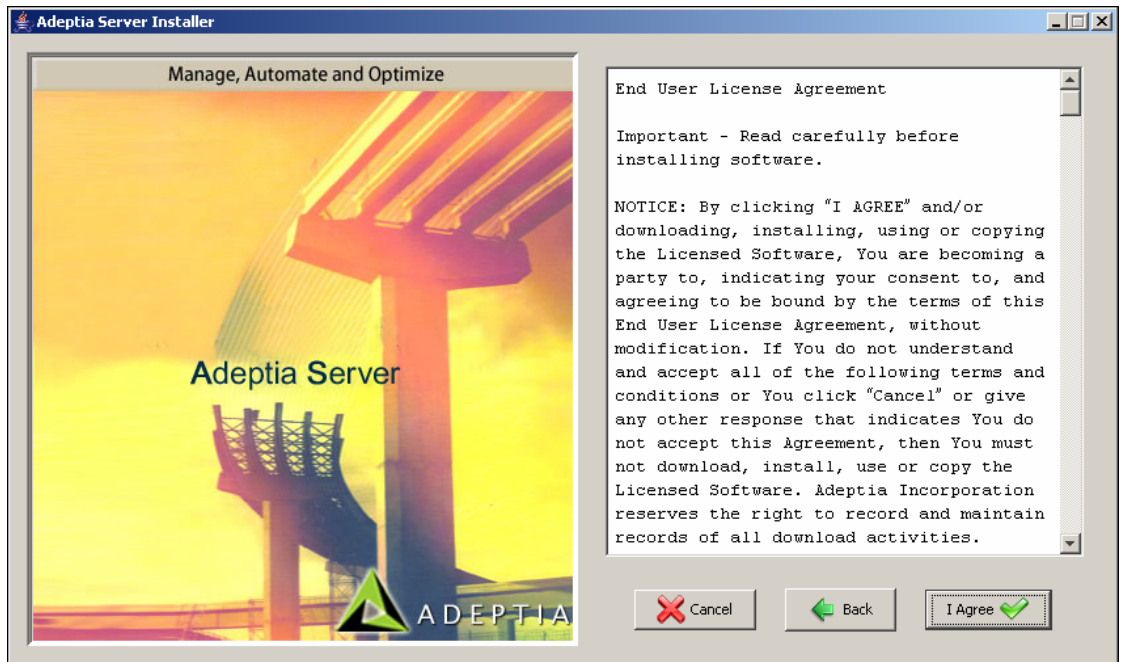


Figure 3.2: End User License Agreement

5. Click **I Agree** button to accept the End User License Agreement and continue the installation. The Installation Directory screen is displayed (see Figure 3.3).

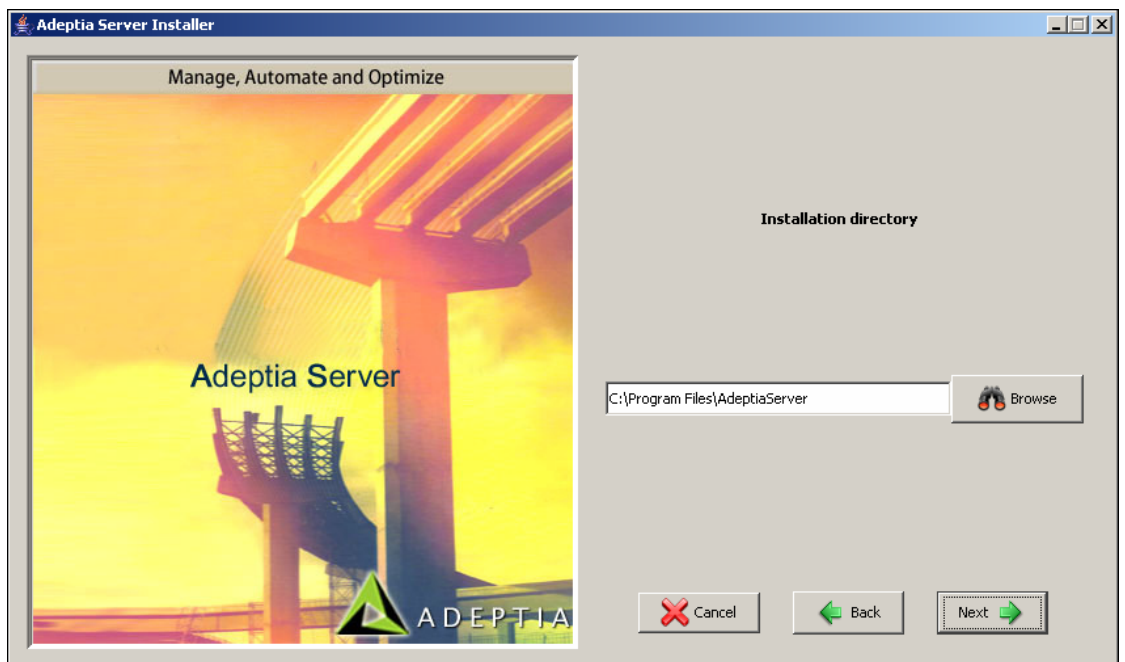


Figure 3.3: Installation Directory

6. Click **Browse** button to select the directory in which you want to install the Adeptia Server. By default, it is installed in the directory **C:\Program**

Files\AdeptiaServer. Once you select the directory, click **Next** button. This starts the Adeptia Server install process and displays the Installation screen (see Figure 3.4).



If you are installing Adeptia Server on Linux, by default it is installed in the `/usr/local/bin/AdeptiaServer/AdeptiaServer-4.9` directory.

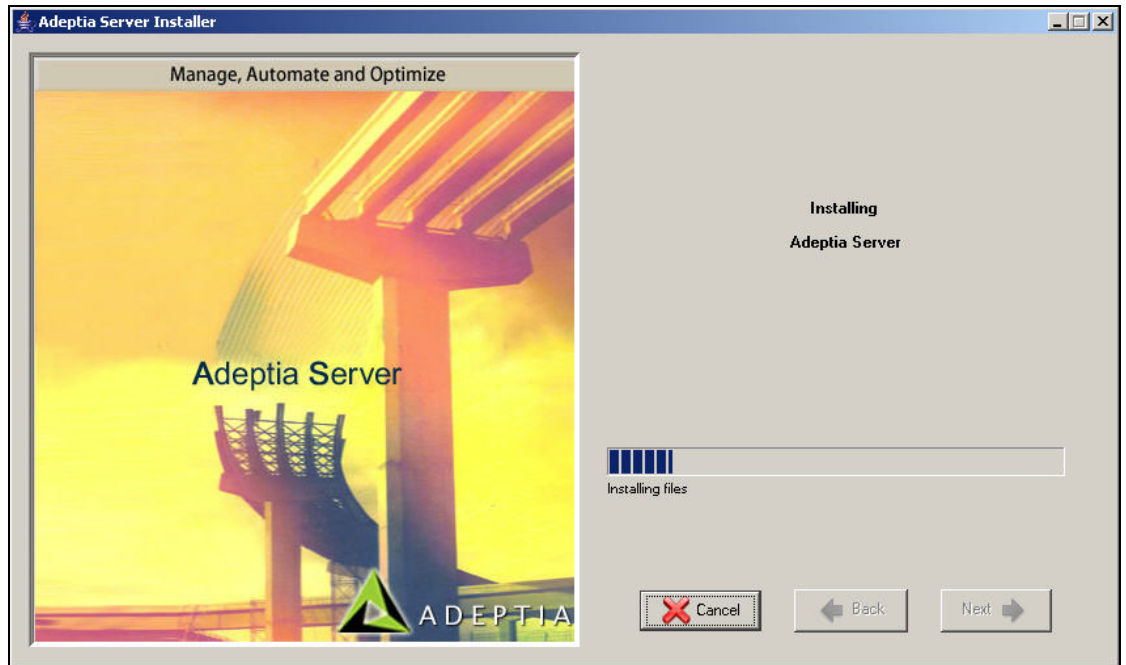


Figure 3.4: Installing Adeptia Server

7. If the selected directory already exists on your system, then a confirmation screen is displayed (see Figure 3.5).

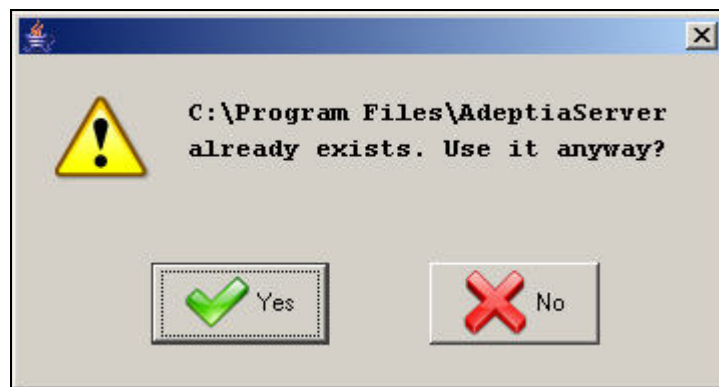


Figure 3.5: Overwrite Existing Directory

8. Click **Yes** button to overwrite the existing directory.
9. If Adeptia Server is already installed in the selected directory, a dialog box appears (see Figure 3.6).

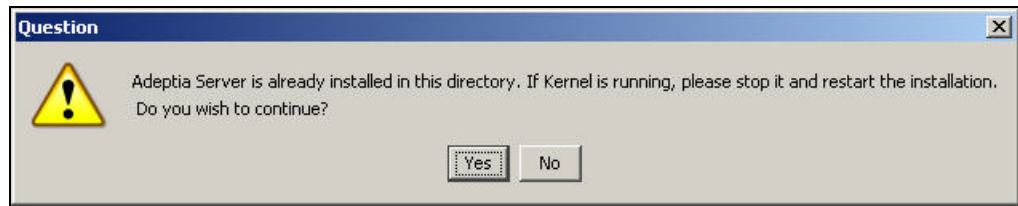


Figure 3.6: Continue Installation

10. Click **Yes** to continue the installation. Make sure that Adeptia Server Kernel and WebRunner are not running.
11. Once the files are copied, the Enter Adeptia Server Database Information screen is displayed (see Figure 3.7).



Figure 3.7: Adeptia Server Database Configuration

12. Select the database type for the server from the *Select Database Type* drop-down menu. Adeptia Server supports SQL, Oracle, MySQL and HSQLDB databases. By default, HSQLDB is already wrapped with Adeptia Server. To select HSQLDB as the database, select '*Use In-built Database (HSQLDB)*' option from the *Select Database Type* drop-down menu, and then click **Next** button.
13. To use database other than HSQLDB, click *Select Database Type* drop-down list and select the required database. This displays additional fields to the Enter Adeptia Server Database Information screen (see Figure 3.8).

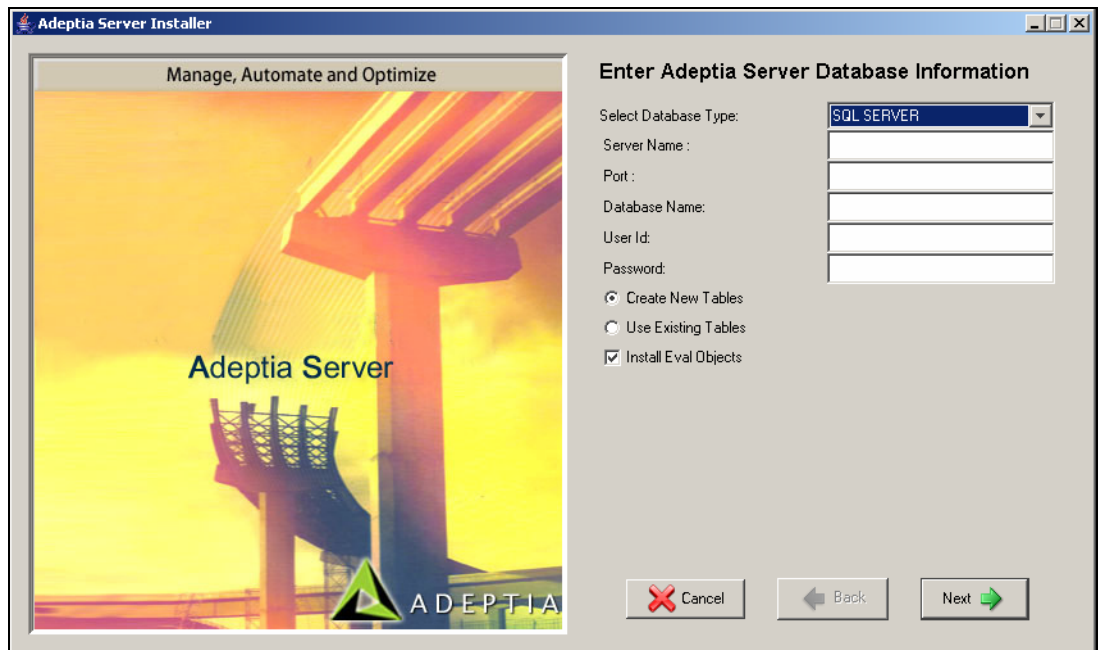



Figure 3.8: Enter Database Parameters

14. Enter the name of the database server in the *Server Name* field.
15. Enter the port number of the database in the *Port* field.
16. Enter the name of the database in the *Database Name* field.
17. Enter the username and password for accessing the database, in the *User Id* and *Password* fields respectively.
18. Select *Create New Tables* radio button, if you wish to create new tables in the defined Adeptia Server Database. Else, select *Use Existing Tables* radio button to use existing tables of the database.

	<p>Adeptia Server is shipped with pre-built Process Flows and activities that are based on real business scenarios. These Process Flows and activities are called Eval Objects. By default these Eval Objects are installed with Adeptia Server.</p>
---	---

19. If you do not want to install the Eval Objects along with the Adeptia Server, uncheck the *Install Eval Objects* checkbox.
20. Click **Next** button. The Adeptia Server Database Configuration Confirmation screen is displayed (see Figure 3.9).

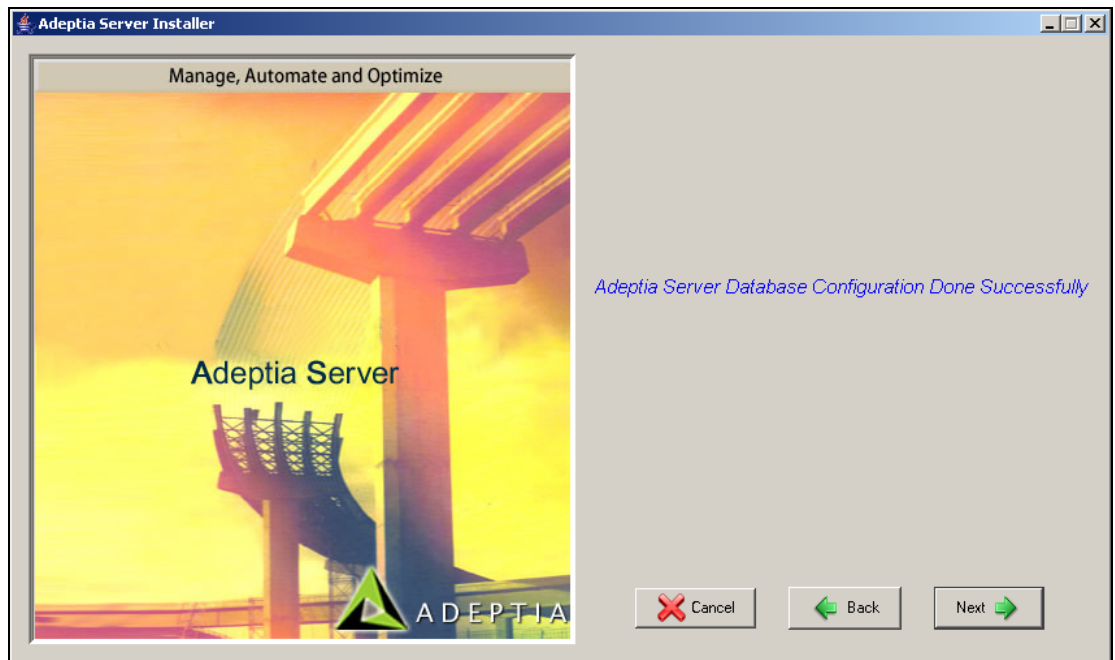


Figure 3.9: Database Configured

21. Click **Next** button. The Enter Adeptia Server Log Database Information screen is displayed (see Figure 3.10).

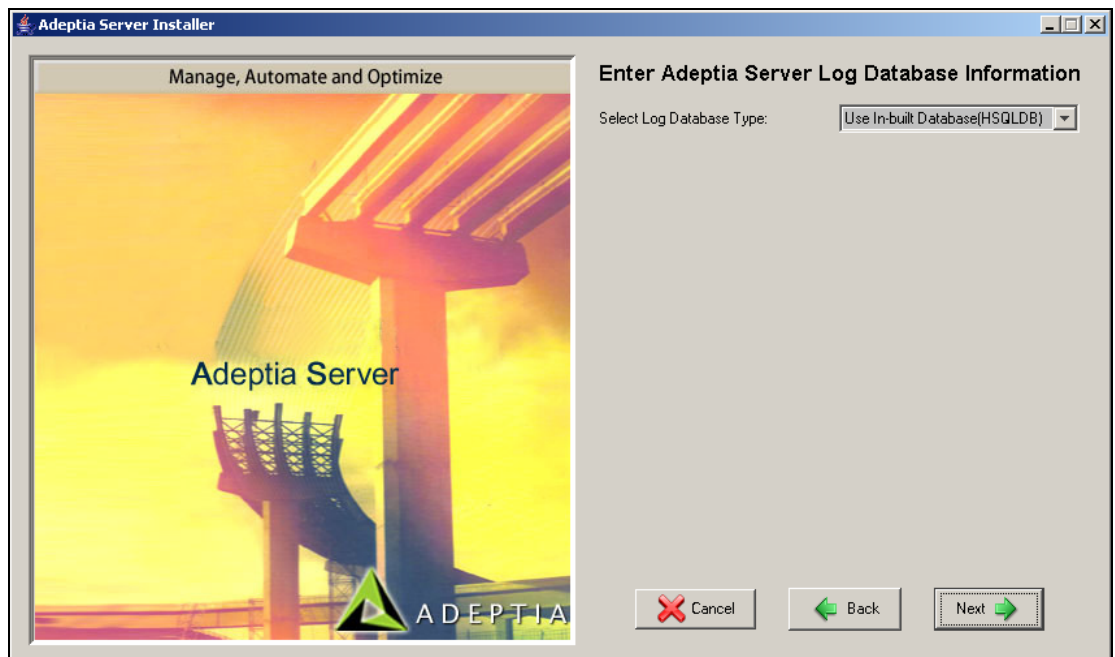



Figure 3.10: Adeptia Server Log Database Configuration

	<p>To know the database configuration information such as the Server Name, Database Name, User ID and Password, contact your System</p>
---	---

	Administrator.
--	----------------

22. Repeat steps 12 to 18, if you want to select a different database for Adeptia Server logs.
23. To select the database same as that of Adeptia Server Database, select the '*Same as Adeptia Server Database*' option from the *Select Database Type* drop-down list.
24. Select *Create New Tables* radio button, if you wish to create new tables in the defined Adeptia Server Log Database. Else, select *Use Existing Tables* radio button to use existing tables of the database.
25. Click **Next** button. The Adeptia Server Log Database Configuration Confirmation screen is displayed (see Figure 3.11).



Figure 3.11: Adeptia Server Log Database Configured

26. Click **Next** button. The WebServer Configuration Parameters screen is displayed (see Figure 3.12).

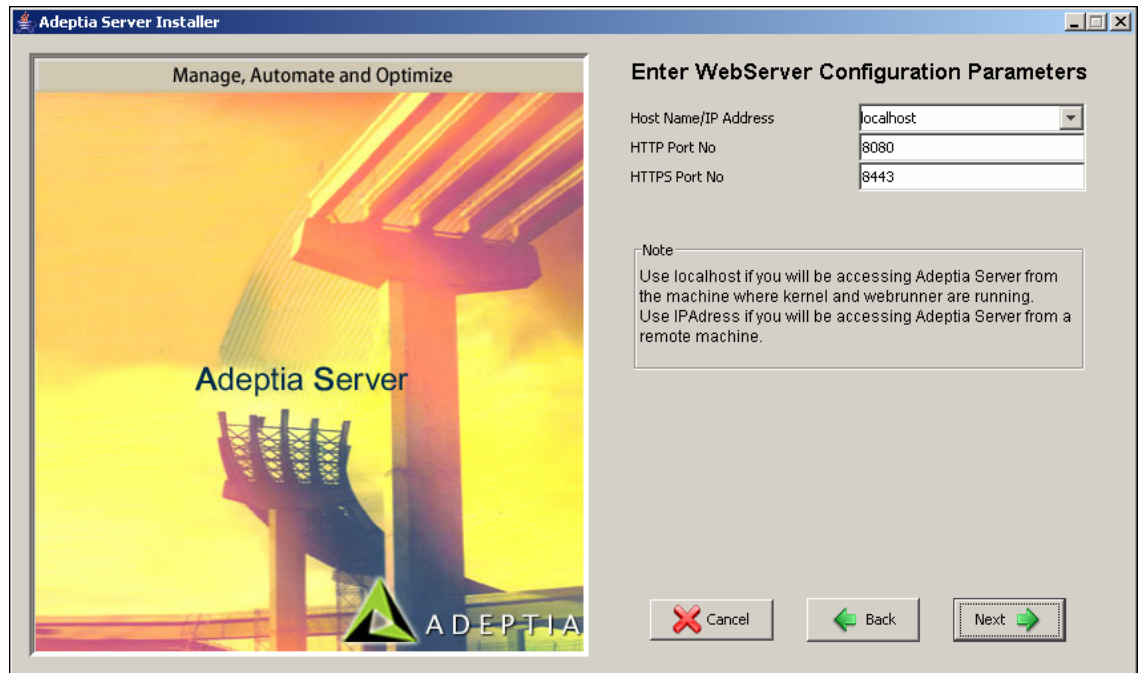


Figure 3.12: WebServer Configuration Parameters

27. Select the IP address, which will be used to access Adeptia Server, from the *HostName/ IP Address* drop-down list. If more than one IP Addresses are defined on the server, all IP addresses are listed in the *HostName/ IP Address* drop-down list.
28. Enter the HTTP port, which will be used to access Adeptia Server, in the *HTTP Port No* field. Make sure this port is not being used by another application. By default port 8080 is used as HTTP port.
29. Enter the Secure HTTP port, which will be used to access Adeptia Server in secure mode, in the *HTTPs Port No* field. Make sure this port is not being used by another application. By default port 8443 is used as HTTPs port.
30. Click **Next** button. The Enter Email Configuration Parameters screen is displayed (see Figure 3.13).



Figure 3.13: Email Configuration Parameters

31. Enter the address of outgoing mail (SMTP) server in the *Mail (SMTP) Server* field.
32. Enter the email address of the Adeptia Server Administrator or System Administrator in the *Admin's E-mail Id* field.
33. Enter the username and password, for accessing the defined email account, in the *Account Name* and *Password* fields respectively.
34. Enter the port of outgoing mail (SMTP) server in *Mail (SMTP) Port* field.
35. Check *SSL Enabled* checkbox, if the specified outgoing mail server requires a secure connection.
36. Click **Next** button. The Shortcuts and Windows Service Configuration screen is displayed (see Figure 3.14).



	<ul style="list-style-type: none"> ▪ Though Email Configuration Parameters are required by Adeptia Server to send email notifications, you can skip the Email Configuration. To skip the email configuration, leave the fields blank and click the Next button. If you leave these fields blank and click Next, a dialog box appears to confirm that you want to skip the email configuration. Click Yes to continue the installation. ▪ You can enter these parameters later. To know how to enter Email Parameters after installation, refer to Adeptia Server User Guide.
---	---



Figure 3.14: Create Shortcuts and Add Windows Services

37. By default shortcuts for Adeptia Server Kernel and WebRunner are created on desktop. If you don't want to create shortcuts on desktop, uncheck the *Adeptia Server Kernel* and *Adeptia Server WebRunner* checkboxes, displayed under *Add Shortcuts to Desktop* option.
38. To install Adeptia Server Kernel and WebRunner as windows service, check the *Adeptia Server Kernel* and *Adeptia Server WebRunner* checkboxes, displayed under *Add as Windows Service* option.

	<p>When Adeptia Server Kernel and WebRunner are installed as Windows Service:</p> <ul style="list-style-type: none"> ▪ A dialog box appears recommending to restart the system after installation (see Figure 3.15). ▪ They automatically start with Windows startup. ▪ They can be started and stopped from the Control Panel. ▪ Output of the kernel and webrunner are logged in <i>Kernel-out.log</i> and <i>Webrunner-out.log</i> file respectively. These files are located in <i>ServerKernel</i> folder of Adeptia Server.
---	---

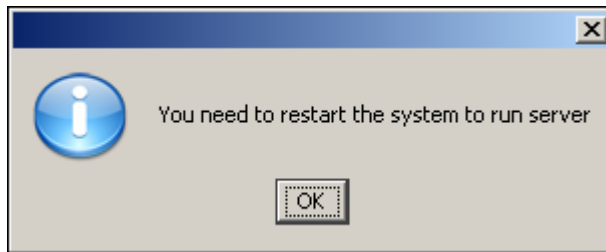


Figure 3.15: Restart System to Run Server

39. To start Adeptia Server Kernel and WebRunner manually, do not check the *Adeptia Server Kernel* and *Adeptia Server WebRunner* checkboxes, displayed under *Add as Windows Service* option.
40. Click **Next** button. The Adeptia Server installation Confirmation screen is displayed (see Figure 3.16).

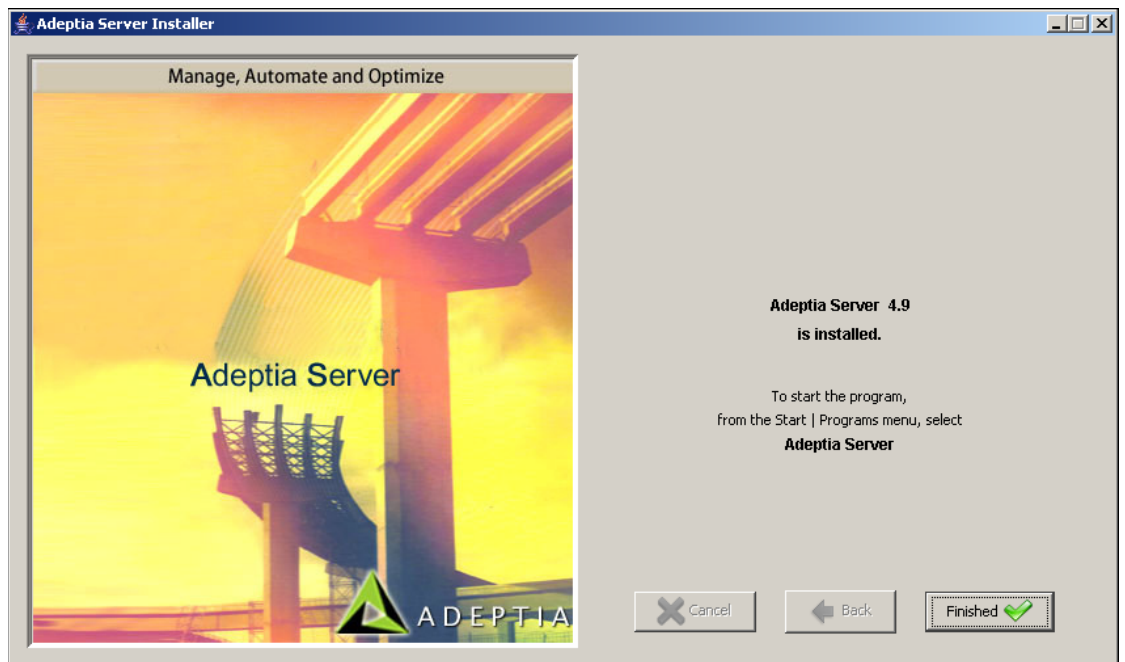



Figure 3.16: Adeptia Server Installation Confirmation

41. Click **Finished** button to exit the installation wizard.

	<p>If Adeptia Server Kernel and WebRunner are installed as Windows Service:</p> <ol style="list-style-type: none"> 1. Click Start > Settings > Control Panel > Administrative Tools > Services. This displays the Services window. 2. Double-click the <i>Adeptia Server Kernel Service</i>. The Adeptia Server Kernel Properties Window is displayed. 3. Click the <i>Log On</i> Tab. 4. Select <i>This Account</i> radio button and enter the username, which has administrative rights on the system. By default, the administrator user has administrative rights on the system. 5. Enter the password of the specified username in the <i>password</i> box.
---	--

6. Similarly, repeat steps 2 to 5 to configure *Adeptia Server WebRunner* as Windows service.
7. Click **OK** to close the properties window and restart the system.

Here you can manually start the Adeptia Server Kernel and WebRunner. In this case you have to restart the system.

To start the Kernel, right click Adeptia Server Kernel and select *Start*.

To start the WebRunner, right click the Adeptia Server WebRunner and select the *Start*.

4 UPDATING LICENSE

This section explains how to update a new license in case your license is expired and you get a new license. This section applies only if Adeptia Server is already installed and you want to update the license.

If you are installing Adeptia server for the first time, skip this section, as license is already bundled with the installer.

Steps to update the license:

1. Click **Start > Programs > Adeptia Server** and then select **Adeptia Server Update License**. The Adeptia License Wizard appears (see Figure 4.1).

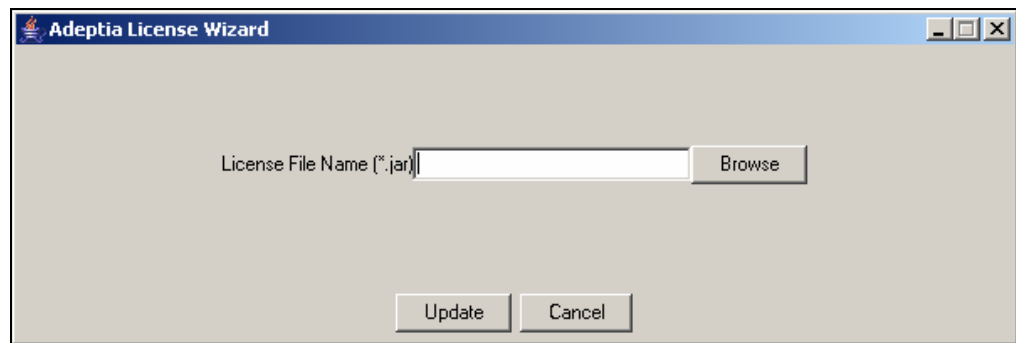


Figure 4.1: Select License File

2. Click **Browse** and select the *License.jar* file. The path of the selected file is shown in the *License File Name (*.jar)* field (see Figure 4.2).

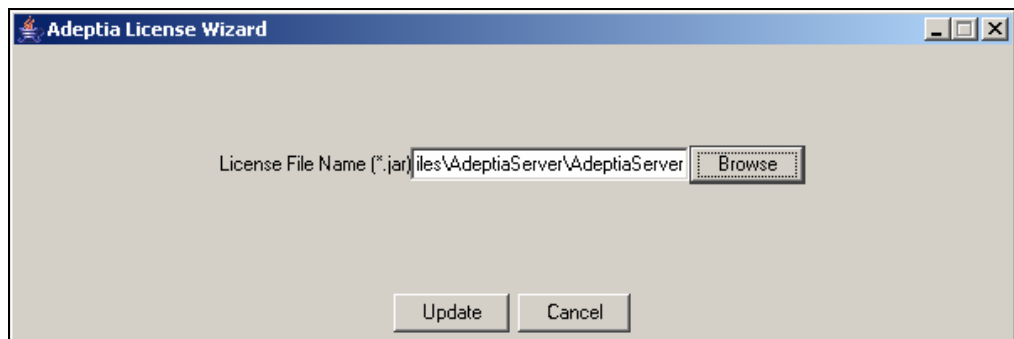


Figure 4.2: License File Path

3. Click **Update**. A warning message is displayed (see Figure 4.3).

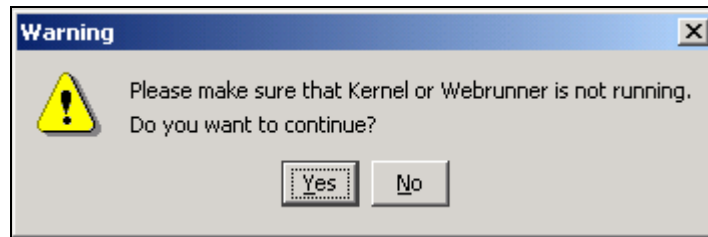


Figure 4.3: Warning Message

4. Make sure that Kernel and WebRunner are not running and click **Yes**. A dialog box appears confirming that the license is updated successfully (see Figure 4.4).

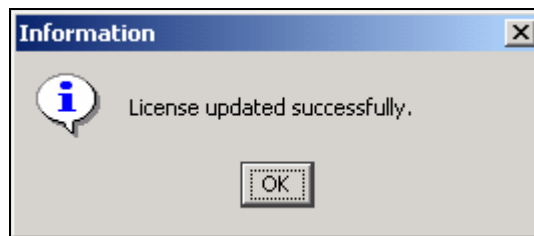


Figure 4.4: Confirmation Message


5. Click **OK** to close the dialog box.

5 GETTING STARTED WITH ADEPTIA SERVER

This section guides you to start the Adeptia Server Kernel and WebRunner. This section also describes the login process.

STARTING ADEPTIA SERVER KERNEL AND WEB RUNNER ON WINDOWS

Before accessing the Adeptia Server, you must start the Adeptia Server Kernel and WebRunner.

	<p>If you have installed Adeptia Server as Windows service, skip this section. Adeptia Server Kernel and Web Runner automatically start during windows startup.</p>
---	---

Steps to start the Adeptia Server Kernel and WebRunner on Windows :

1. Click **Start > Programs > Adeptia Server** and then select **Adeptia Server Kernel**. The console window with the kernel message is displayed (see Figure 5.1).

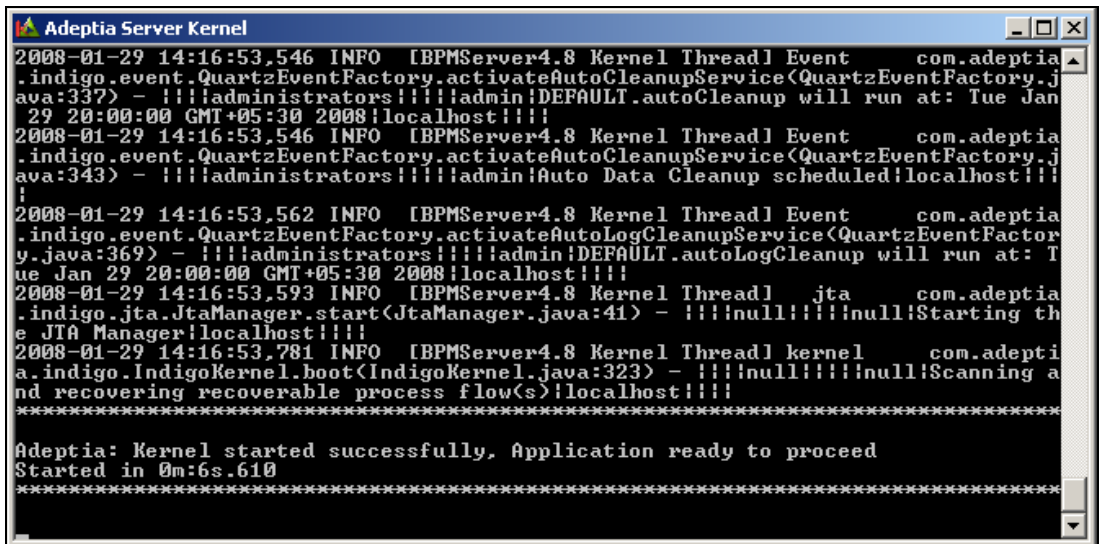
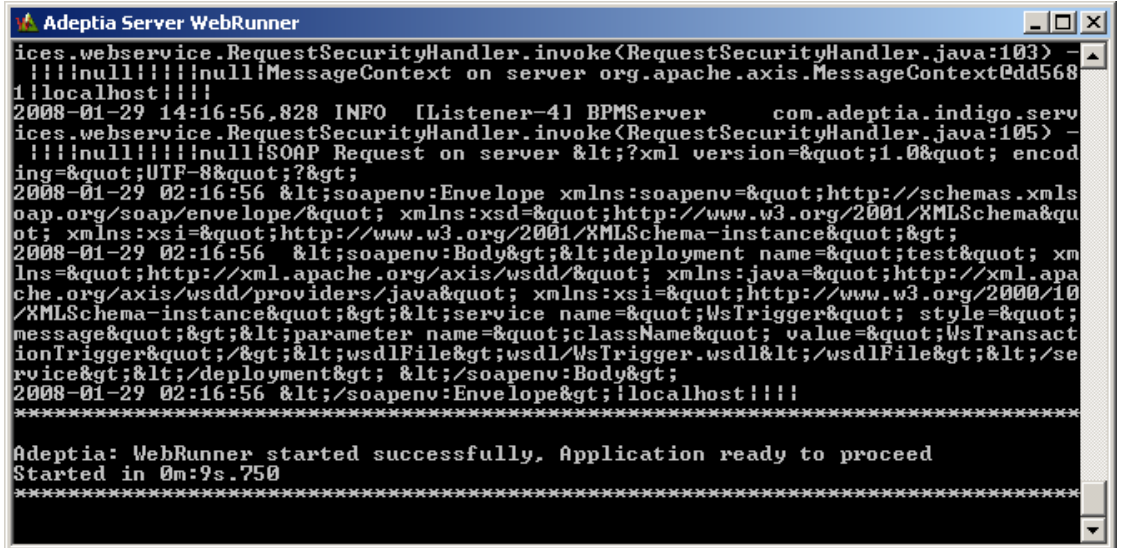


Figure 5.1: Starting Adeptia Server Kernel

2. Check the kernel console for a message displaying time taken by the kernel to start. For example, '**Started in 0m:6s.610**' implies that the kernel started in 6 seconds and 610 milliseconds.

3. Click **Start > Programs > Adeptia Server** and then select **Adeptia Server WebRunner** to start the Adeptia Server WebRunner. A new console window with the Web Runner message is displayed (see Figure 5.2).




```

ices.webservice.RequestSecurityHandler.invoke(RequestSecurityHandler.java:103) -
!!!null!!!!null!MessageContext on server org.apache.axis.MessageContext@d568
1!localhost!!!!
2008-01-29 14:16:56,828 INFO [Listener-4] BPMServer com.adeptia.indigo.serv
ices.webservice.RequestSecurityHandler.invoke(RequestSecurityHandler.java:105) -
!!!null!!!!null!SOAP Request on server <?xml version="1.0"; encod
ing="UTF-8";?>
2008-01-29 02:16:56 <?xml:namespace prefix=soapenv=http://schemas.xmls
oap.org/soap/envelope/> xmlns:xsd=http://www.w3.org/2001/XMLSchema&qu
ot; xmlns:xsi=http://www.w3.org/2001/XMLSchema-instance&quot;&gt;
2008-01-29 02:16:56 <?xml:namespace prefix=soapenv=http://schemas.xmls
oap.org/soap/envelope/> xmlns:xsd=http://www.w3.org/2001/XMLSchema&qu
ot; xmlns:xsi=http://www.w3.org/2001/XMLSchema-instance&quot;&gt;
<test&quot; xm
lns=http://xml.apache.org/axis/wsdd/&quot; xmlns:java=http://xml.apa
che.org/axis/wsdd/providers/java&quot; xmlns:xsi=http://www.w3.org/2000/10
/XMLSchema-instance&quot;&gt;&lt;service name=&quot;WsTrigger&quot; style=&quot;
message&quot;&gt;&lt;parameter name=&quot;className&quot; value=&quot;WsTransact
ionTrigger&quot;/&gt;&lt;wsdlFile&gt;wsdl/WsTrigger.wsdl&lt;/wsdlFile&gt;&lt;/se
rvice&gt;&lt;/deployment&gt; &lt;/soapenv:Body&gt;
2008-01-29 02:16:56 <?xml:namespace prefix=soapenv=http://schemas.xmls
oap.org/soap/envelope/>!!!localhost!!!!
*****
Adeptia: WebRunner started successfully, Application ready to proceed
Started in 0m:9s.750
*****

```

Figure 5.2: Starting Adeptia Server WebRunner

4. Check the WebRunner console for a message displaying time taken by the WebRunner to start. For example, **'Started in 0m: 9s.750'** implies that the WebRunner started in 9 seconds and 750 milliseconds.

	<p>To stop the Kernel and WebRunner, use <Control>+ <C>. Alternately, you can stop the Kernel from the GUI. For details refer to the <i>Managing Kernel</i> section of the User Guide. It is recommended to stop the Kernel from the GUI, as it will wait for all running transactions to execute and then stop the Kernel. However, < Control > + <C> stops the kernel instantly terminating all transactions. If you close Kernel and WebRunner DOS windows by clicking on the cross (close) button, Java Virtual Machine (JVM) used by Adeptia Server may not shut down properly.</p>
---	--

STARTING ADEPTIA SERVER KERNEL AND WEBRUNNER ON LINUX

	<p>If you have installed Adeptia Server as a service, skip this section. Adeptia Server Kernel and Web Runner automatically start during startup.</p>
---	---


Steps to start Adeptia Server Kernel and WebRunner on Linux:

1. Open the command line terminal and change to the folder where Adeptia Server is installed. By default Adeptia Server is installed in ***/usr/local/bin/AdeptiaServer/AdeptiaServer-4.8***.
2. Run the command ***./kernel-run.sh***. A message is displayed confirming that Adeptia Server Kernel is successfully started (Refer to Figure 5.1).
3. To start webrunner, open another command line terminal and change to the folder where Adeptia Server is installed.
4. Run the command ***./WebRunner-run.sh***. A message is displayed that Adeptia Server webrunner is successfully started (Refer to Figure 5.2).

LOGIN INTO ADEPTIA SERVER

Steps to login into the Adeptia Server:

1. Click **Start > Programs > Internet Explorer**. The Internet Explorer web browser window is displayed.
2. Type <http://IpAddress:8080/adeptia/control/> in the URL field and then press **Enter**. This displays the Adeptia Server Login screen (see Figure 5.3).

	<ul style="list-style-type: none">▪ "IpAddress" in the URL is the IP Address of the Server on which Adeptia Server is running. For example if the Adeptia Server is running on a Server whose IP address is 192.1681.1, the URL will be http://192.168.1.1:8080/adeptia/control/▪ If Adeptia Server is running on local machine, the URL will be http://localhost:8080/adeptia/control/▪ The Adeptia Server is tested only on Internet Explorer.
--	--

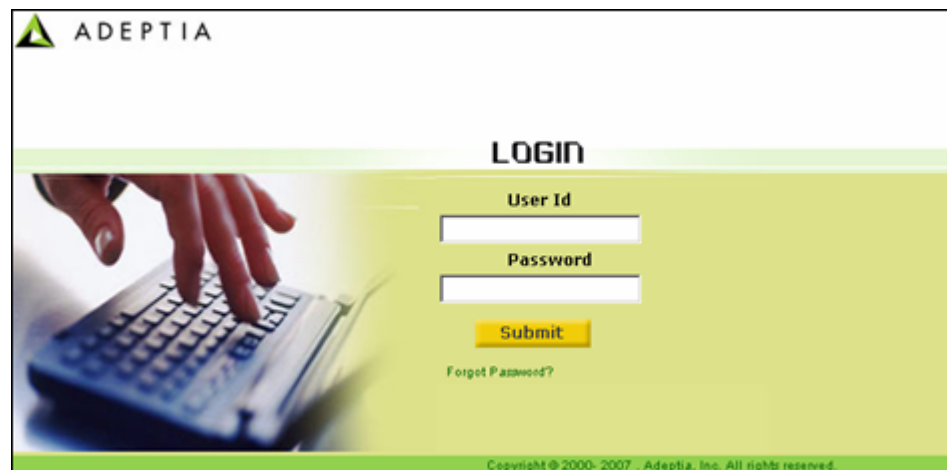


Figure 5.3: Adeptia Server Login Screen

3. Enter User ID and Password in their respective fields.



- Default User ID is **admin** and the password is **indigo1**.
- The password should be a minimum of 6 characters in length and should include a numeric value.
- The password will expire after the number of days specified in the *Value* field, while setting the *Expiry Days* property. For example. If this value is set to 30, then the password will expire after 30 days. If this value is set to 0, then the password will not expire. Additionally, you can generate a password expiry warning to be displayed at the time of login. For example, if 5 is specified in the *Value* field, while setting the *Expiry Message Flash* property, then a warning will be displayed 5 days before the password is to expire. It will be displayed each time you login.
- If the password is already expired, then the Change Password screen is displayed at the time of login.
- It is mandatory to save all activities before changing the password. Else, the changes will not be reflected in the activities.

4. Click the **Submit** button. The next screen is displayed, based on the user's workgroup. If the user is a member of more than one group, then the login screen is displayed again, with the *Group* field (see Figure 5.4). Else the Adeptia Server Home Page is displayed with details associated with the logged in user's group.



The *Group* drop-down menu is populated with only those groups of which the logged in user is a member.

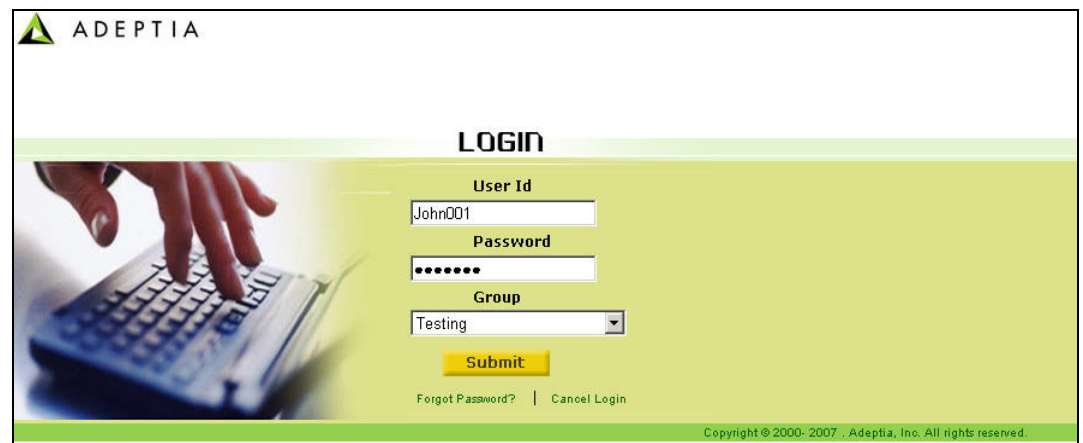


Figure 5.4: Adeptia Server Select Group Screen

5. Select the group with which the user wants to login, from the *Group* drop-down list.




A user can be a member of more than one group. But he can login and access objects associated with one group at a time. For example, a user is a member of two groups: *Administrators* and *Executives*. Both these groups vary in terms of objects. He can login as a member of either the *Administrators* or the *Executives* group at a time.

6. Click **Submit**. The Adeptia Server Home Page is displayed with details associated with the selected user group (see Figure 5.5).



Figure 5.5: Adeptia Server Homepage



- By default you are logged in the *Standard* mode. If you want to login into the **Secure** mode, use the following URL to login into Adeptia Server:
<https://IpAddress:8443/adeptia/control/>
- Click **Yes** to close the Security Alert dialog box.
- When you login into the **Secure** mode, the data transfer from your PC to the Server happens in encrypted form and through a secure channel.
- To learn how to use Adeptia Server, refer to the Adeptia Server User Guide.

6 UNINSTALLING ADEPTIA SERVER

Steps to uninstall Adeptia Server:

1. Close the Adeptia Server Kernel and WebRunner screens.
2. Click **Start > Programs > Adeptia Server** and then select **Adeptia Server Uninstall**. The Confirm Adeptia Server Uninstallation screen is displayed (see Figure 6.1).

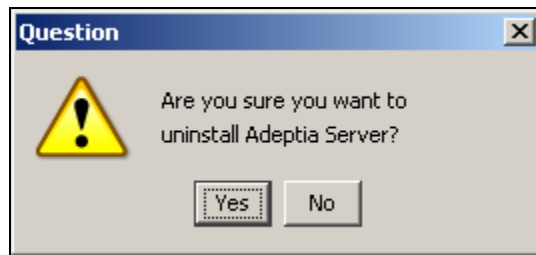


Figure 6.1: Confirm Adeptia Server Uninstallation

3. Click **Yes** button, if you want to uninstall the Adeptia Server. This starts the Uninstallation process and displays Uninstalling Adeptia Server screen (see Figure 6.2).

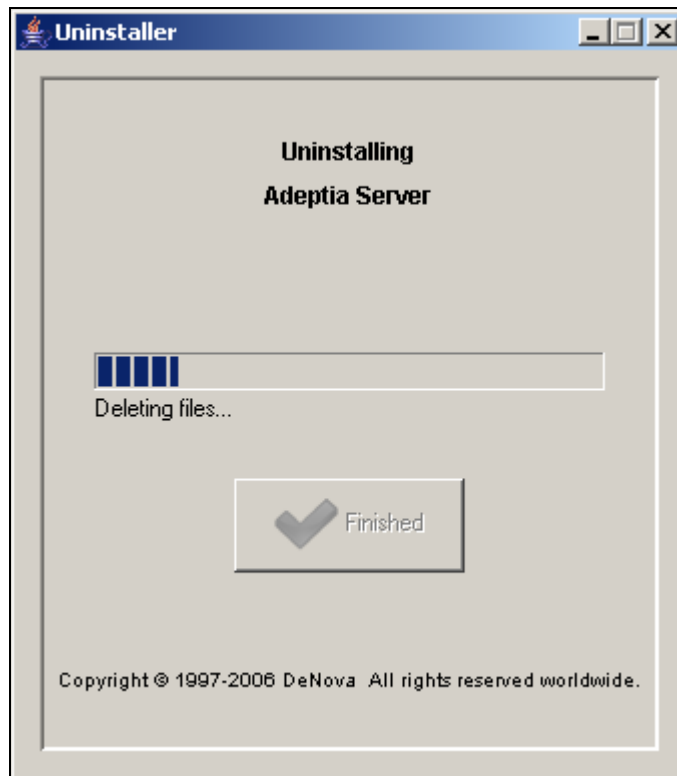


Figure 6.2: Uninstalling Adeptia Server

4. Once the uninstallation process is complete, the Uninstallation Completed screen is displayed (see Figure 6.3).

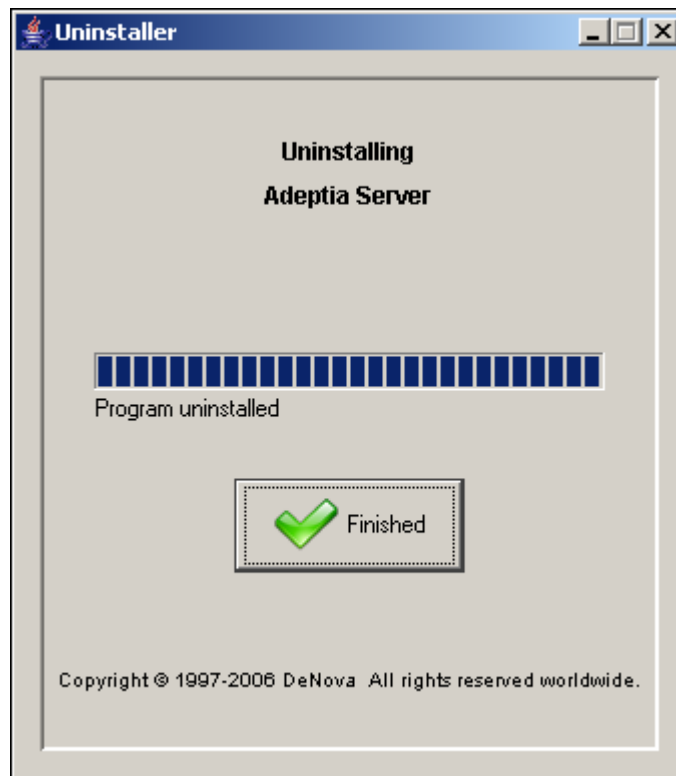



Figure 6.3: Uninstallation Complete

5. Click **Finished** button to exit the uninstaller.

	<ul style="list-style-type: none">▪ The Adeptia Server uninstaller does not delete the JRE folder, which is created during installation. These files need to be deleted manually from the folder where Adeptia Server is installed.▪ If Adeptia Server is uninstalled from Windows Vista, shortcuts are not deleted from the program menu. You have to delete them manually.
---	---

7 ABOUT ADEPTIA INC.

Adeptia, an enterprise software company headquartered in Chicago, Illinois, provides a business process integration technology to easily and quickly automate business processes using industry-specific standards. Adeptia's unique product combines business process management with business-to-business integration. Adeptia's reusable and highly scalable technology has been deployed by Fortune 1000 companies. For more information, visit www.adeptia.com.

Adeptia Headquarters
443 North Clark St, Suite 350
Chicago, IL 60610
USA
Phone: (312) 229-1727
Email: info@adeptia.com

Adeptia India R&D Centre
D-4, 1st Floor, Sector 10,
Noida, U.P. - 201301
India
Phone: +91-120-3052137 / 8 / 9

Table of Figures

Figure 3.1: Welcome Screen	8
Figure 3.2: End User License Agreement.....	9
Figure 3.3: Installation Directory	9
Figure 3.4: Installing Adeptia Server	10
Figure 3.5: Overwrite Existing Directory	10
Figure 3.6: Continue Installation.....	11
Figure 3.7: Adeptia Server Database Configuration	11
Figure 3.8: Enter Database Parameters	12
Figure 3.9: Database Configured	13
Figure 3.10: Adeptia Server Log Database Configuration	13
Figure 3.11: Adeptia Server Log Database Configured	14
Figure 3.12: WebServer Configuration Parameters	15
Figure 3.13: Email Configuration Parameters.....	16
Figure 3.14: Create Shortcuts and Add Windows Services	17
Figure 3.15: Restart System to Run Server	18
Figure 3.16: Adeptia Server Installation Confirmation	18
Figure 4.1: Select License File	20
Figure 4.2: License File Path	20
Figure 4.3: Warning Message	21
Figure 4.4: Confirmation Message.....	21
Figure 5.1: Starting Adeptia Server Kernel	22
Figure 5.2: Starting Adeptia Server WebRunner	23
Figure 5.3: Adeptia Server Login Screen.....	24
Figure 5.4: Adeptia Server Select Group Screen.....	25
Figure 5.5: Adeptia Server Homepage	26
Figure 6.1: Confirm Adeptia Server Uninstallation	27
Figure 6.2: Uninstalling Adeptia Server	28
Figure 6.3: Uninstallation Complete	29

Table of Tables

Table 2.1 : JRE Dependency of Adeptia Server Components	6
---	---