

# **Adeptia Suite 5.0 SP2**

## **Installation Guide**

**Release Date April 9, 2010**

Adeptia Inc.  
443 North Clark Ave,  
Suite 350  
Chicago, IL 60654, USA

## Copyright

Copyright © 2000-2009 Adeptia, Inc. All rights reserved.

## Trademarks

The Adeptia™ is a trademark of Adeptia, Inc.


## Statement of Conditions

Adeptia, Inc. provides this publication "as is" without warranty of any kind, either express or implied. In no event shall Adeptia be liable for any loss of profits, loss of business, loss of use or data, interruption of business, or for indirect, special, punitive, incidental, or consequential damages of any kind.

No part of this work covered by copyright herein may be reproduced in any form or by any means—graphic, electronic or mechanical—including photocopying, recording, taping, or storage in an information retrieval system, without prior written permission of the copyright owner.

This publication is subject to replacement by a later edition. To determine if a later edition exists, contact [www.adeptia.com](http://www.adeptia.com).

## Document Conventions

Convention	Description
Text Matter in font Verdana and font size 9 point.	Explains the installation guide.
<a href="#">Text matter</a>	Click on link to reach target.
	Note:

## Abbreviations Used

Abbreviation	Description
JRE	Java Runtime Environment
IE	Microsoft Internet Explorer

## Contact Information

In case of any queries, please contact us at:

Contact For	Email ID
Sales	<a href="mailto:sales@adeptia.com">sales@adeptia.com</a>
Support	<a href="mailto:support@adeptia.com">support@adeptia.com</a>

For latest updates and information, please visit us at [www.adeptia.com](http://www.adeptia.com) .

# Table of Contents

<b>1</b>	<b>ABOUT THIS GUIDE</b> .....	<b>4</b>
	APPLIES TO.....	4
<b>2</b>	<b>PRE-INSTALLATION REQUIREMENTS</b> .....	<b>4</b>
	HARDWARE AND OPERATING SYSTEM REQUIREMENTS .....	4
	DATABASE REQUIREMENTS .....	5
	SOFTWARE REQUIREMENTS FOR SERVER .....	5
	SOFTWARE REQUIREMENTS FOR CLIENT .....	5
<b>3</b>	<b>DOWNLOADING ADEPTIA SUITE PRODUCT</b> .....	<b>6</b>
<b>4</b>	<b>INSTALLING ADEPTIA SUITE</b> .....	<b>6</b>
	INSTALLING ADEPTIA SUITE IN GUI MODE .....	7
	INSTALLING ADEPTIA SUITE IN CONSOLE MODE.....	21
<b>5</b>	<b>UPDATING LICENSE</b> .....	<b>24</b>
	UPDATING LICENSE ON WINDOWS .....	24
	UPDATING LICENSE ON LINUX/SOLARIS .....	26
<b>6</b>	<b>RUNNING ADEPTIA SUITE</b> .....	<b>27</b>
	STARTING KERNEL AND WEB RUNNER ON WINDOWS .....	27
	<i>Starting Kernel and WebRunner as a Service</i> .....	27
	<i>Starting Kernel and WebRunner from Start Menu/Desktop</i> .....	27
	STARTING ADEPTIA SUITE KERNEL AND WEBRUNNER ON LINUX AND SOLARIS.....	29
	LOGIN INTO ADEPTIA SUITE.....	31
	STOPPING KERNEL AND WEBRUNNER ON LINUX AND SOLARIS.....	33
<b>7</b>	<b>UNINSTALLING ADEPTIA SUITE FROM WINDOWS</b> .....	<b>34</b>
<b>8</b>	<b>CHANGING MEMORY SETTINGS FOR JVM</b> .....	<b>36</b>
<b>9</b>	<b>DISABLING JRE AUTO UPDATE</b> .....	<b>37</b>
<b>10</b>	<b>ABOUT ADEPTIA INC.</b> .....	<b>38</b>
<b>11</b>	<b>TABLE OF FIGURES</b> .....	<b>39</b>

# 1 ABOUT THIS GUIDE

This document provides guidelines for installing Adeptia Suite on Microsoft Windows and Linux/Solaris operating systems.

It explains all tasks required to install the application. These are outlined as:

- [Conforming to all pre-installation requirements](#)
- [Downloading Adeptia Suite Product](#)
- [Installing Adeptia Suite](#)
- [Updating License](#)
- [Login in the Adeptia Suite](#)
- [Uninstalling Adeptia Suite](#)

## APPLIES TO

This document applies to following Adeptia Products:

- Adeptia BPM Suite
- Adeptia Integration Suite
- Adeptia ETL Suite

# 2 PRE-INSTALLATION REQUIREMENTS

This section describes the pre-requisites to be met before installing Adeptia Suite:


- [Hardware and Operating System Requirements](#)
- [Database Requirements](#)
- [Software Requirements for Server](#)
- [Software Requirements for Client](#)

## HARDWARE AND OPERATING SYSTEM REQUIREMENTS

The minimum hardware requirements for installing Adeptia Suite are outlined as:

- Intel Pentium IV or higher PC with Windows/Linux/Solaris operating system.

- Minimum of 2GB RAM. However, it is recommended to use 4GB RAM.
- Hard Disk space of 2GB for installation.
- User must have administrative rights on the machine, where Adeptia Suite is to be installed.
- Adeptia Suite can also be installed and run on virtualized environment without any issue.

	<p>This edition of Adeptia Suite is certified for following operating systems:</p> <ul style="list-style-type: none"><li>▪ Windows 2000</li><li>▪ Windows 2003</li><li>▪ Windows XP</li><li>▪ Windows Vista</li><li>▪ Linux (RedHat 10, Suse Linux 10, Ubuntu Linux)</li><li>▪ Solaris 10</li></ul>
-----------------------------------------------------------------------------------	-----------------------------------------------------------------------------------------------------------------------------------------------------------------------------------------------------------------------------------------------------------------------------------------------------

These are merely approximate figures. The actual RAM and hard disk space required for running Adeptia Suite would depend on various factors such as the *number of services running on the node*, the *complexity of the services deployed on the node* and *CPU usage* required by these services. The *anticipated data flow* and *performance expected from the system* also determine the RAM and hard disk requirements.

## DATABASE REQUIREMENTS

Database is required for logs. The database requirements for installing Adeptia Suite are outlined as:

- Embedded database as HSQLDB or other databases which could be MySQL server, SQL Server or Oracle.
- If other databases are used for logs, then the database user must have permissions to create access and update the tables.

## SOFTWARE REQUIREMENTS FOR SERVER

For installing and running Adeptia Suite on Windows and Linux and Solaris, no additional software is required. JRE used by Adeptia Suite is already bundled with it.

## SOFTWARE REQUIREMENTS FOR CLIENT

Software requirements for client machine, which you will use to access Adeptia Suite, are outlined as:

- Java Runtime Environment (JRE) 1.6
- Internet Explorer 6 or 7 (Java enabled) browser installed on the PC.



Internet Explorer 6 and 7 are the only certified web browser for Adeptia Suite.

- Acrobat Reader to view PDF files generated by Process Modeler, Process Designer and Data Mapper.



In case JRE 1.4.2 or JRE 1.5 is installed on the client-end PC, then the applets will automatically download JRE 1.6 from the JAVA website.

If you have JRE 1.6 installed on the client machine, you need to disable JRE Auto update feature. To know how to disable JRE Auto Update, refer to [Disabling JRE Auto Update](#) section.

Incase you are accessing Adeptia Server from the machine where Kernel and Webrunner are running, then the software's required for client machine must be installed there.

The *Pop-Up Blocker* needs to be disabled in the web browser, in order to open the applets. By default, the *Pop-Up Blocker* is enabled.

### 3 DOWNLOADING ADEPTIA SUITE PRODUCT

To download Adeptia Suite on your system, you need to download the zip file (***AdeptiaSuite<Version>\_<OS>.zip***) from the Adeptia website. Here **<Version>** is the version of Adeptia Suite and **<OS>** is the operating system that you are using.

The zip file contains the following files:

- Executable file (This varies based on the **<OS>** you are using. It will be *Install.exe* for Windows and *Install.bin* for Linux and Solaris)
- License.jar
- Accelerators zip (It could be *Eval.zip*, *NetSuite.zip*, *SalesForce.zip* and *EDI.zip*. These depend upon the license that you have purchased.)

### 4 INSTALLING ADEPTIA SUITE

Adeptia Suite can be installed in GUI mode or Console mode. If the GUI is not configured, then the installation will automatically start in Console mode. You can also start installation in console mode manually. For details, refer to [Installing Adeptia Suite in Console Mode](#) section.

#### Pre-requisites:

When installing Adeptia Suite on Windows ensure that you are logged in as "Administrator" or any other user with administrative rights. When installing Adeptia Suite on Linux or Solaris, ensure that you are logged in as "root" or any other user with administrative rights.

## INSTALLING ADEPTIA SUITE IN GUI MODE

### *Steps to install Adeptia Suite in GUI mode:*

1. Unzip the **AdeptiaSuite<Version>\_<OS>.zip** file and save its contents in a directory. Here **<Version>** is the version of Adeptia Suite and **<OS>** is the operating system (e.g. Windows).
2. To install Adeptia Suite on Windows double-click the **install.exe** file.

To install the Adeptia Suite on Linux/Solaris execute the **install.bin** file using the following command:

```
./install.bin
```

The Introduction screen is displayed (see Figure 4.1).



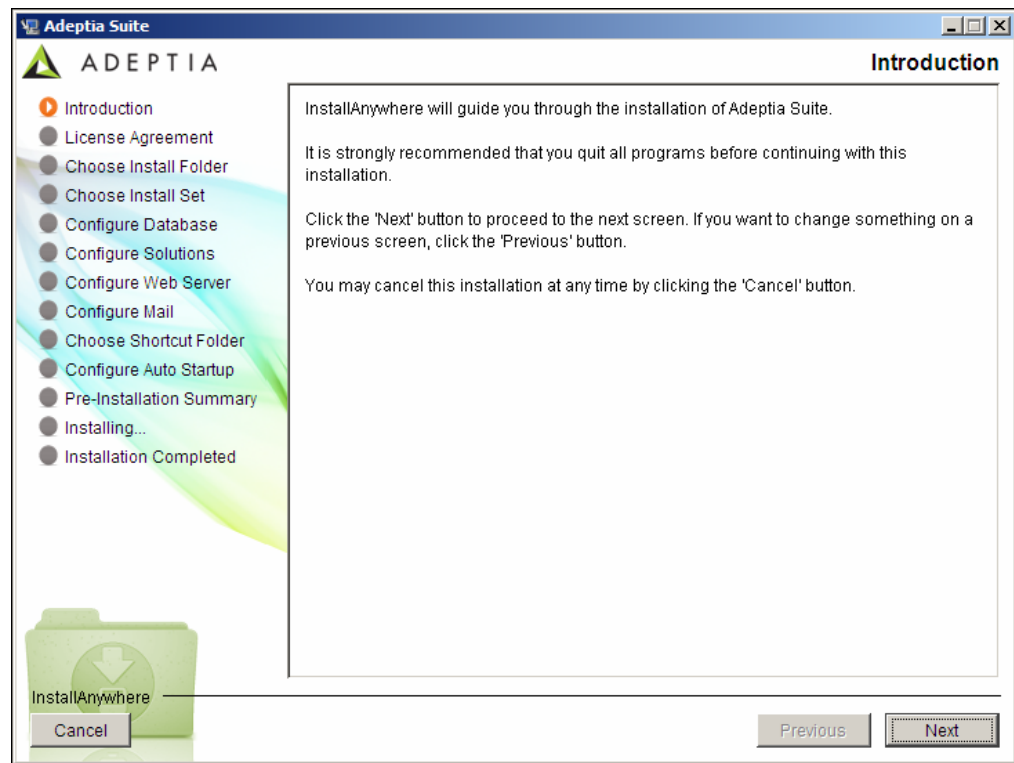


Figure 4.1: Introduction Screen

3. This screen provides an introduction to installing Adeptia Suite. Click **Next** button. The License Agreement screen is displayed (see Figure 4.2).

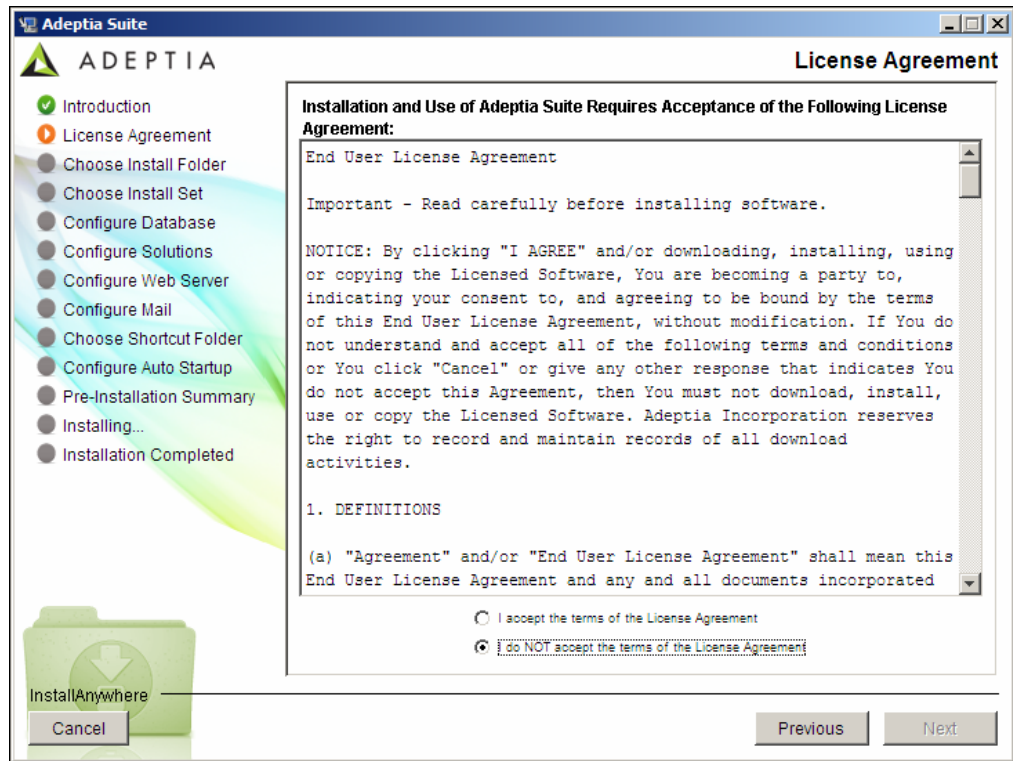


Figure 4.2: License Agreement

4. Select **I accept the terms of the License Agreement** radio button and click **Next** button. The Choose Install Folder screen is displayed (see Figure 4.3).

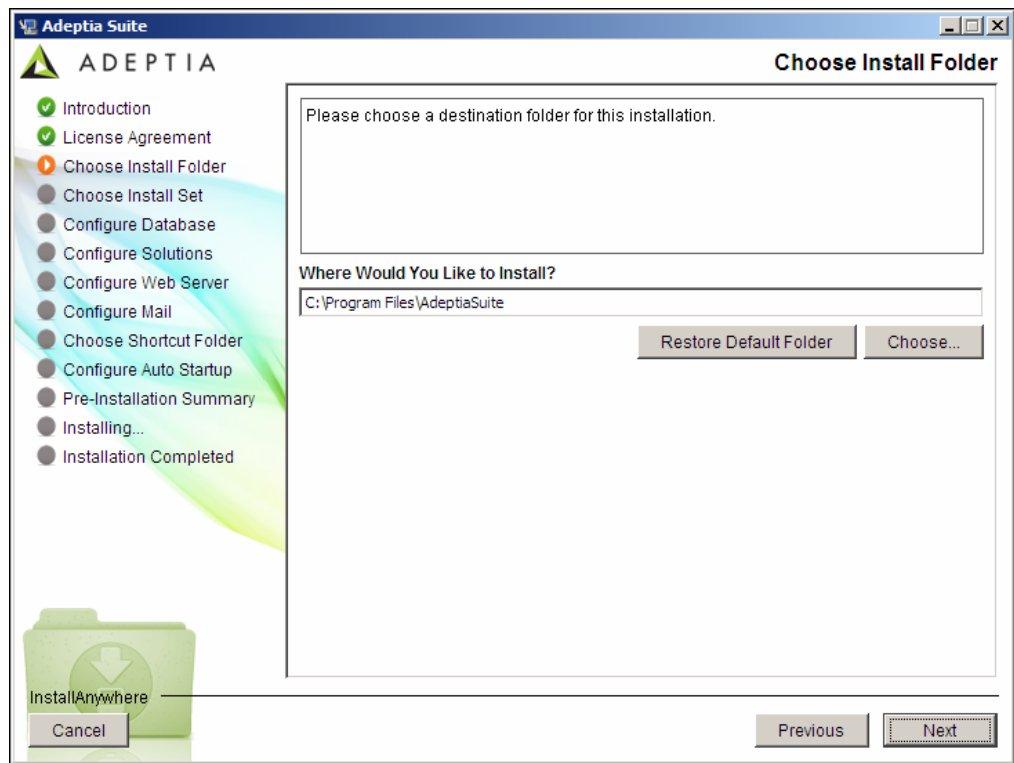



Figure 4.3: Choose Install Folder

5. Select the directory in which you want to install the Adeptia Suite. By default, it is installed in the directory **C:\Program Files\AdeptiaSuite** on Windows. Click **Choose** button to change the directory. Once you select the directory, click **Next** button. The Choose Install Set screen is displayed (see Figure 4.4).

	<p>If you are installing on Linux or Solaris, the default path will be /usr/local/bin.</p>
-------------------------------------------------------------------------------------	--------------------------------------------------------------------------------------------

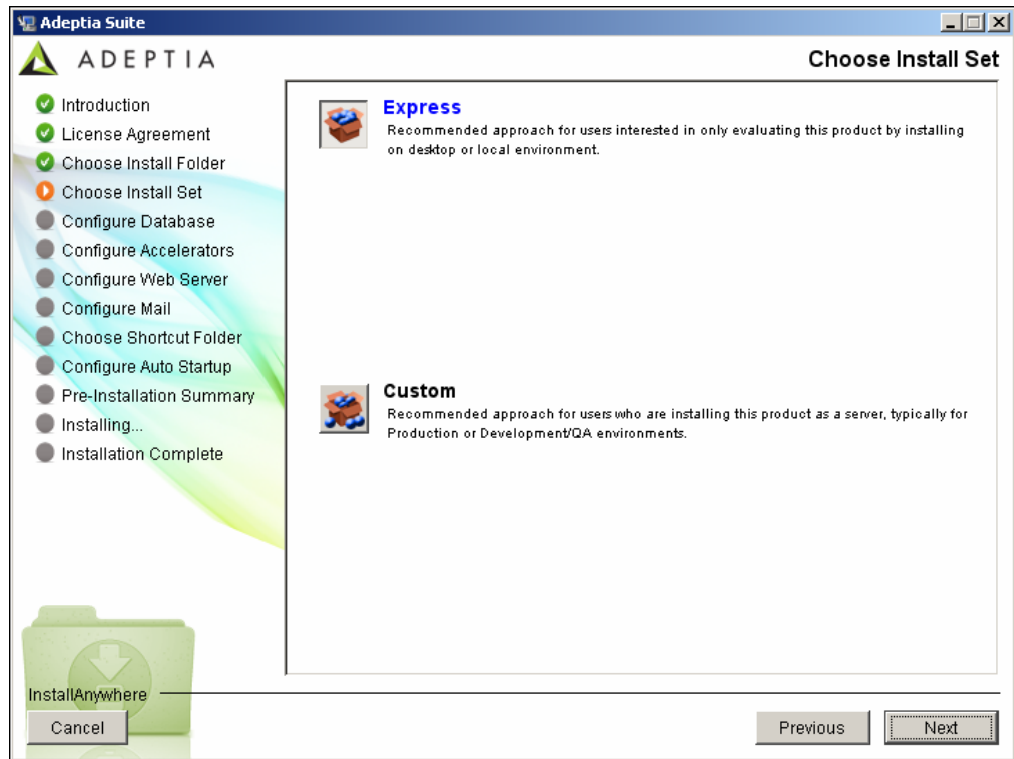


Figure 4.4: Choose Install Set

6. Select the type of installation. *Express* installs all components with their default settings. *Custom* installs all components, but allows you to customize their settings. By default, *Express* is selected. If you select *Express*, and click **Next**, it will install Adeptia Suite with all default settings and display the Configure Accelerators screen (refer to **Figure 4.7** ). However, if you select *Custom*, and click **Next**, it will guide you through the rest of the installation process, and display the Configure Log Database screen (see Figure 4.5 ). This screen displays options for configuring the log database.

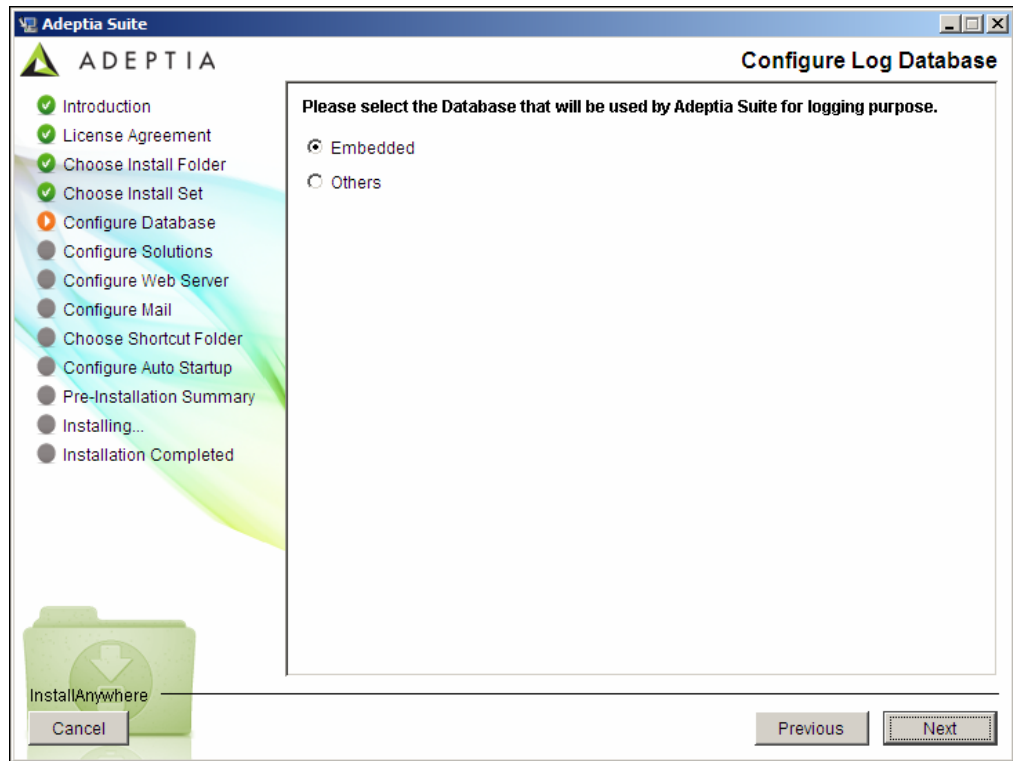


Figure 4.5: Configure Log Database

7. Select the database to be used for logging. By default, *Embedded* is selected. This selection will use the HSQLDB database which is pre-bundled with the application. To select another database, select the *Others* radio button. This selection activates other fields. Select the database that you want to set for logging, from the *Select Database Type* drop-down menu. In addition to HSQLDB, Adeptia Suite supports SQLServer, MySQL, and Oracle databases.
8. Enter the name/IP address of the database server in the *Database Server Name* field.
9. Enter the port number of the database in the *Port* field.
10. Enter the name of the database in the *Database Name* field.
11. Enter the username and password for accessing the database, in the *User Id* and *Password* fields respectively.
12. Re-enter the password in the *Confirm Password* field.
13. Select *Create New Tables* radio button, if you wish to create new tables in the defined Adeptia Suite Database. Else, select *Use Existing Tables* radio button to use existing tables of the database. A sample screen with all fields populated is displayed in Figure 4.6.

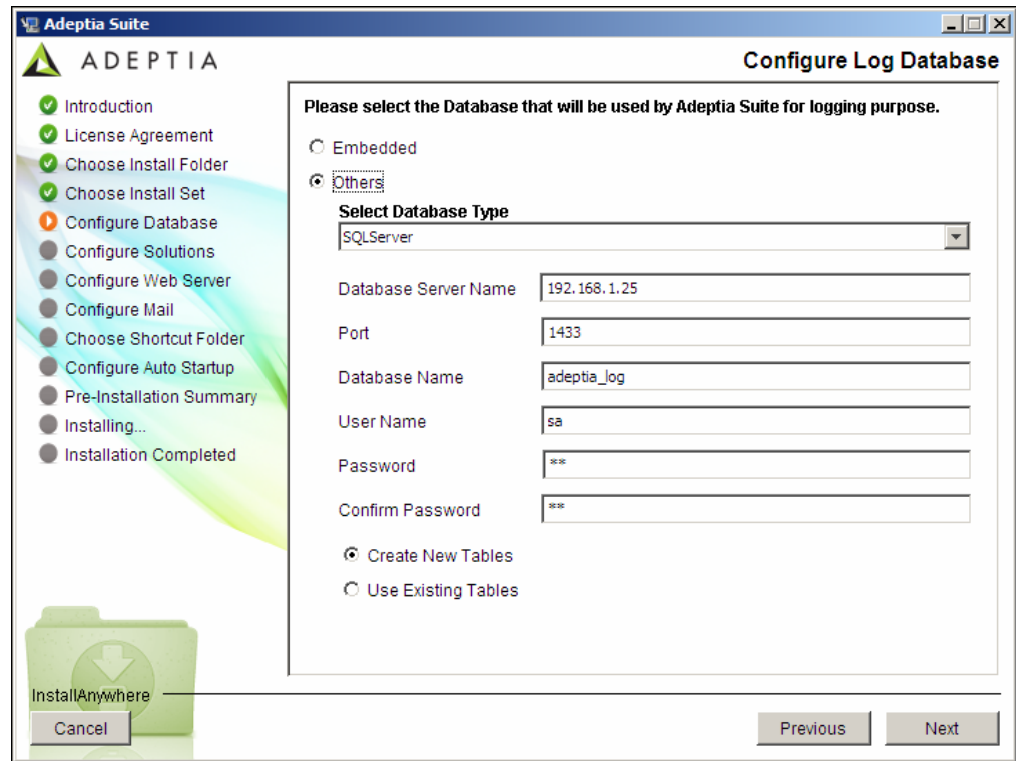




Figure 4.6: Configure Log Database (Populated Fields)

 To know the database configuration information such as the Database Server Name, Database Name, User Name and Password, contact your System Administrator.

14. If you select *Create New Tables*, it will show a popup to confirm overwriting of existing tables. Click **Yes** button to continue..
15. Click **Next** button. The Configure Accelerators screen is displayed (see Figure 4.7). This screen displays a list of all accelerators bundled with Adeptia Suite. Select the checkbox(s) of the accelerators that you want to configure. Selecting an accelerator will display its configuration parameters if required.

 If no accelerators are bundled with Adeptia Suite, then this screen will not appear.

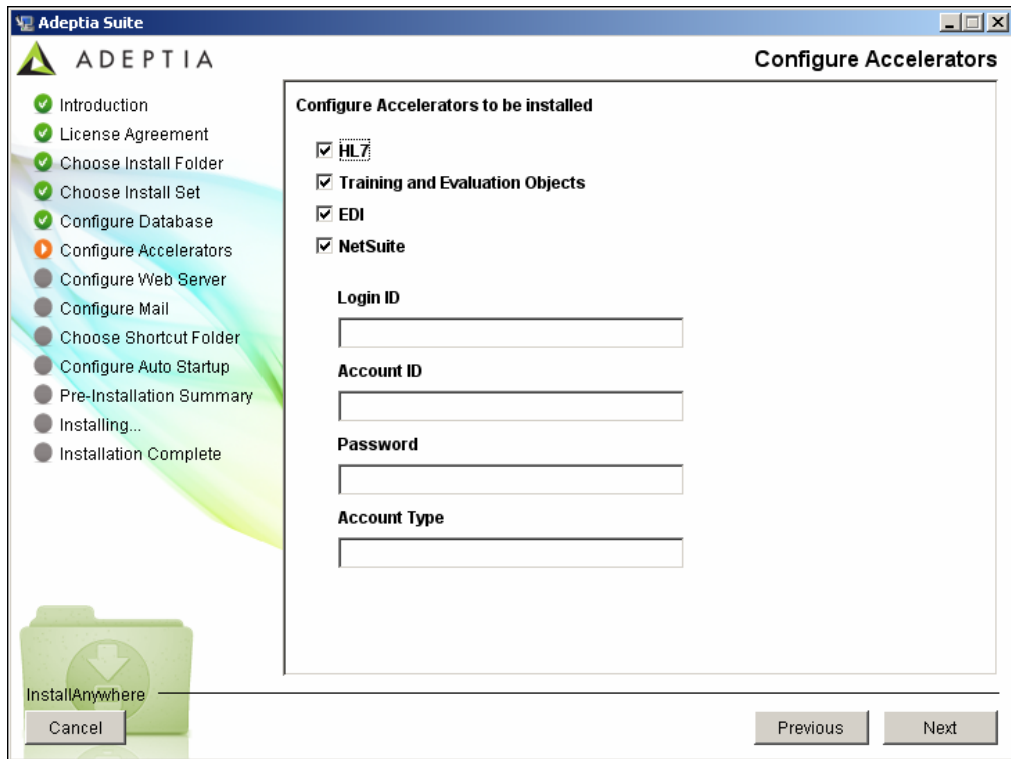


Figure 4.7: Configure Accelerators

16. Enter the required information in these fields and click **Next** button. The Configure Web Server screen is displayed (see Figure 4.8). This screen displays options for configuring Adeptia Suite's WebServer.

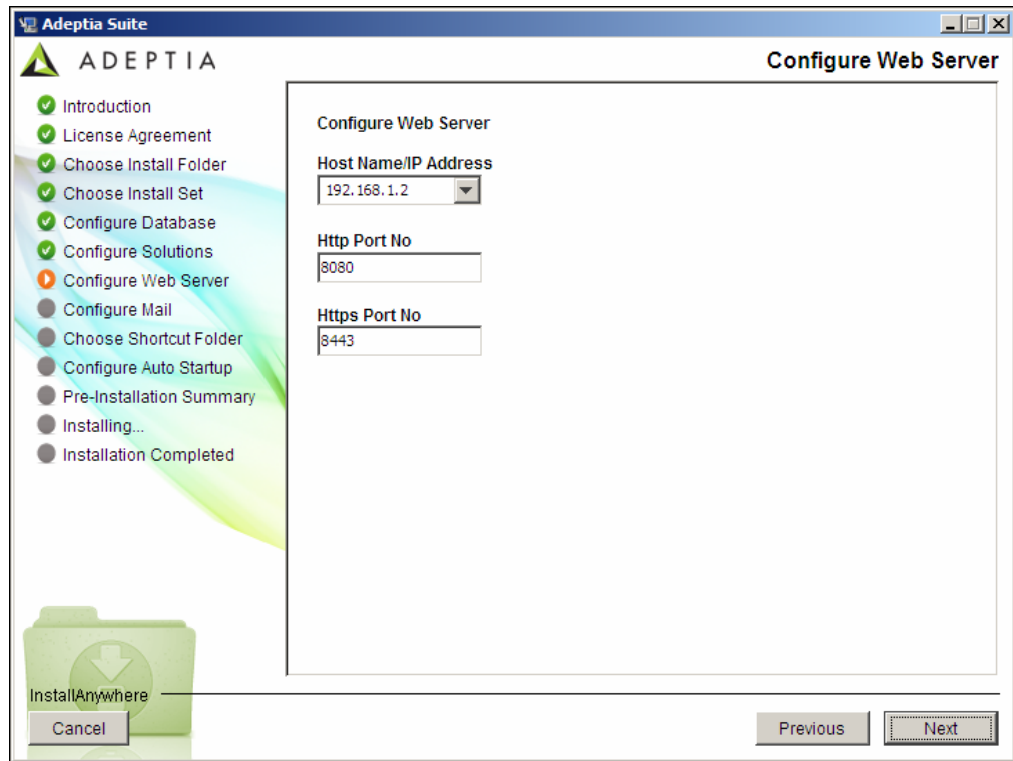


Figure 4.8: Configure Web Server

17. Select the IP address, which will be used to access Adeptia Suite, from the *HostName/ IP Address* drop-down list. If more than one IP Addresses are defined on the server, all IP addresses are listed in the *HostName/ IP Address* drop-down list. You can also manually type the hostname of the machine. But it is strongly recommended to use IP address (Static) as some of the remote services may not work with hostname. In case you machine is configured to receive the IP address from a DHCP Server then it recommended to select *localhost* as your IP address gets changed every time you reboot the machine.
18. Enter the HTTP port, which will be used to access Adeptia Suite, in the *HTTP Port No* field. Make sure this port is not being used by another application. By default port 8080 is used as HTTP port.
19. Enter the Secure HTTP port, which will be used to access Adeptia Suite in secure mode, in the *HTTPs Port No* field. Make sure this port is not being used by another application. By default port 8443 is used as HTTPs port.
20. Once you have entered all information, click **Next** button. The Configure Mail screen is displayed (see Figure 4.9). This screen displays options for configuring the email used for sending mail notifications.



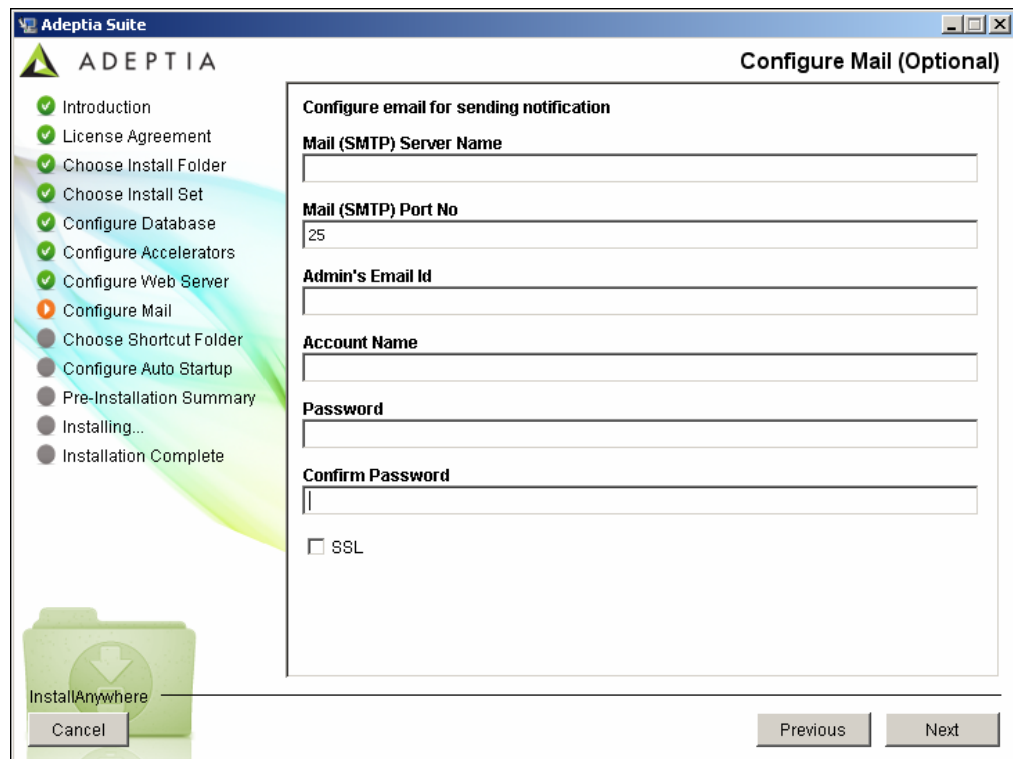



Figure 4.9: Configure Mail

21. Enter the name or IP address of outgoing mail (SMTP) server in the *Mail (SMTP) Server Name* field.
22. Enter the port number of outgoing mail (SMTP) server in *Mail (SMTP) Port No* field.
23. Enter the email address of the Adeptia Suite Administrator or System Administrator in the *Admin's E-mail Id* field.
24. Enter the username and password, for accessing the defined email account, in the *Account Name* and *Password* fields respectively.
25. Re-enter the password in the *Confirm Password* field.
26. Once you have entered all information, click **Next** button. The Choose Shortcut Folder screen is displayed (see Figure 4.10). This screen displays options for selecting the location where Adeptia Suite shortcuts will be placed.

	<ul style="list-style-type: none"> <li>▪ Though Email Configuration Parameters are required by Adeptia Suite to send email notifications, you can skip the Email Configuration. To skip the email configuration, leave the fields blank and click the <b>Next</b> button. If you leave these fields blank and click <b>Next</b>, a dialog box appears to confirm that you want to skip the email configuration. Click <b>Yes</b> to continue the installation.</li> <li>▪ You can enter these parameters later. To know how to enter Email Parameters after installation, refer to Adeptia Suite Admin Guide.</li> </ul>
-------------------------------------------------------------------------------------	--------------------------------------------------------------------------------------------------------------------------------------------------------------------------------------------------------------------------------------------------------------------------------------------------------------------------------------------------------------------------------------------------------------------------------------------------------------------------------------------------------------------------------------------------------------------------------------------------------------------------

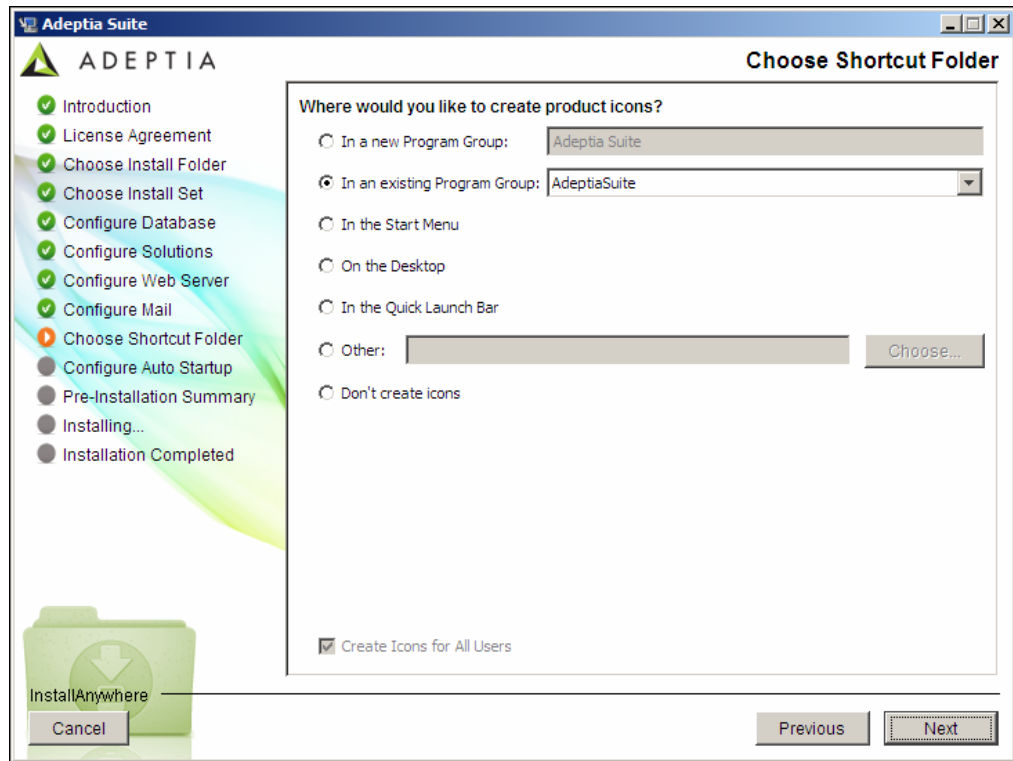


Figure 4.10: Choose Shortcut Folder

27. Select the appropriate radio button to define the location for the shortcut. To create these shortcuts for all users, select the *Create Icons for All Users* checkbox.
28. Once you have entered all selections, click **Next** button. If you select *On the Desktop* option, then clicking **Next** will display the Configure Auto Startup screen (see Figure 4.12). If you select any other option, then a popup message for the confirmation to Add Shortcut to Desktop is displayed (see Figure 4.11).

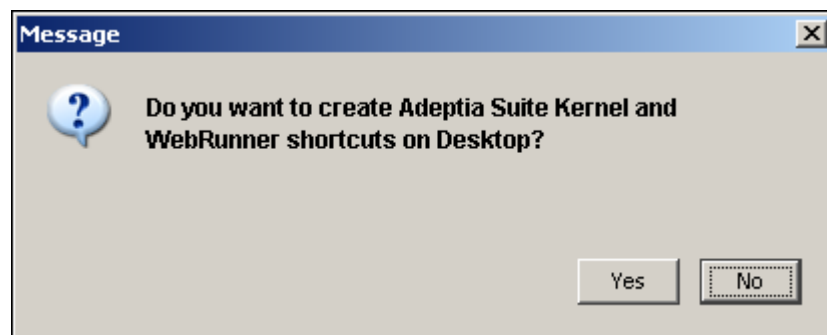


Figure 4.11: Add Shortcut to Desktop

29. Select the Adeptia Suite Kernel and Adeptia Suite WebRunner checkbox(s) if you want to add their shortcuts to the desktop. Click **Next** button. The Configure Auto Startup screen is displayed (see Figure 4.12)

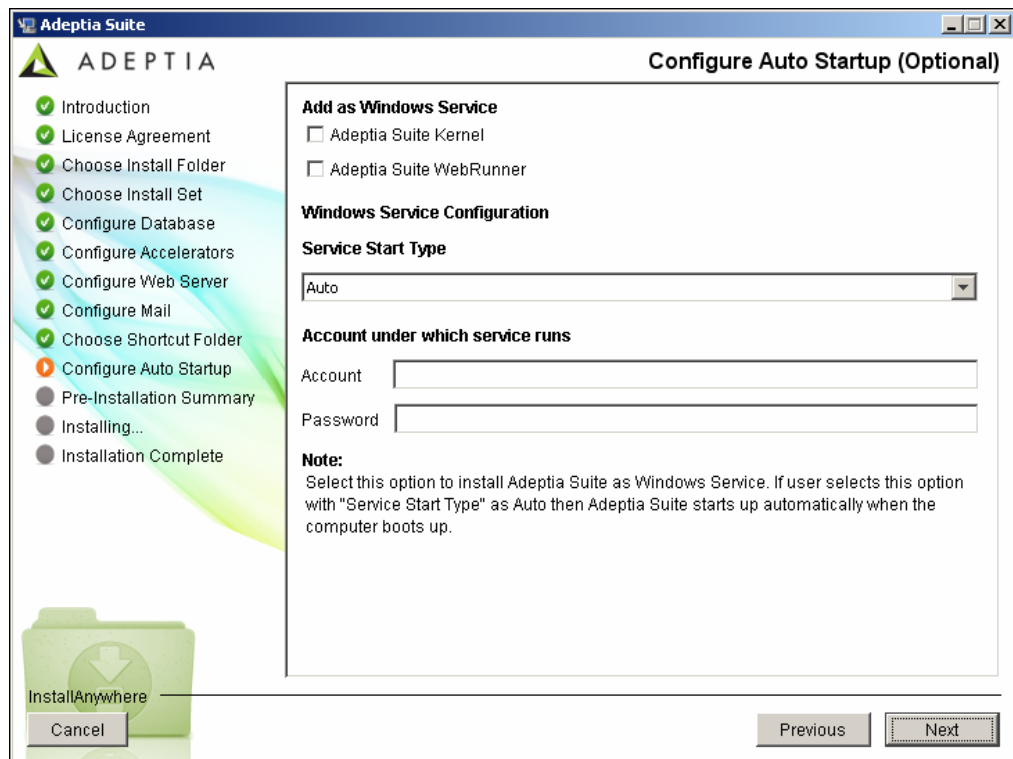




Figure 4.12: Configure Auto Startup

 This screen appears only when installing Adeptia Suite on Windows.

30. This screen provides options for configuring the Kernel and WebRunner as a Windows service. Select the *Adeptia Suite Kernel* and *Adeptia Suite WebRunner* checkboxes, displayed under *Add as Windows Service* option.
31. Select the start type for Windows service from the *Service Start* drop-down menu. If you select *Auto*, then this service gets started automatically, each time you start windows. Else, selecting *Manual* will require manual starting of service.
32. Enter the account (windows user) and password details for the account, which you want to associate with the Kernel and Webrunner service, in their respective fields.

 The selected windows user must have *"Log on as Service"* rights enabled.

33. Once done, click **Next** button. The Pre-installation Summary screen is displayed (see Figure 4.13).

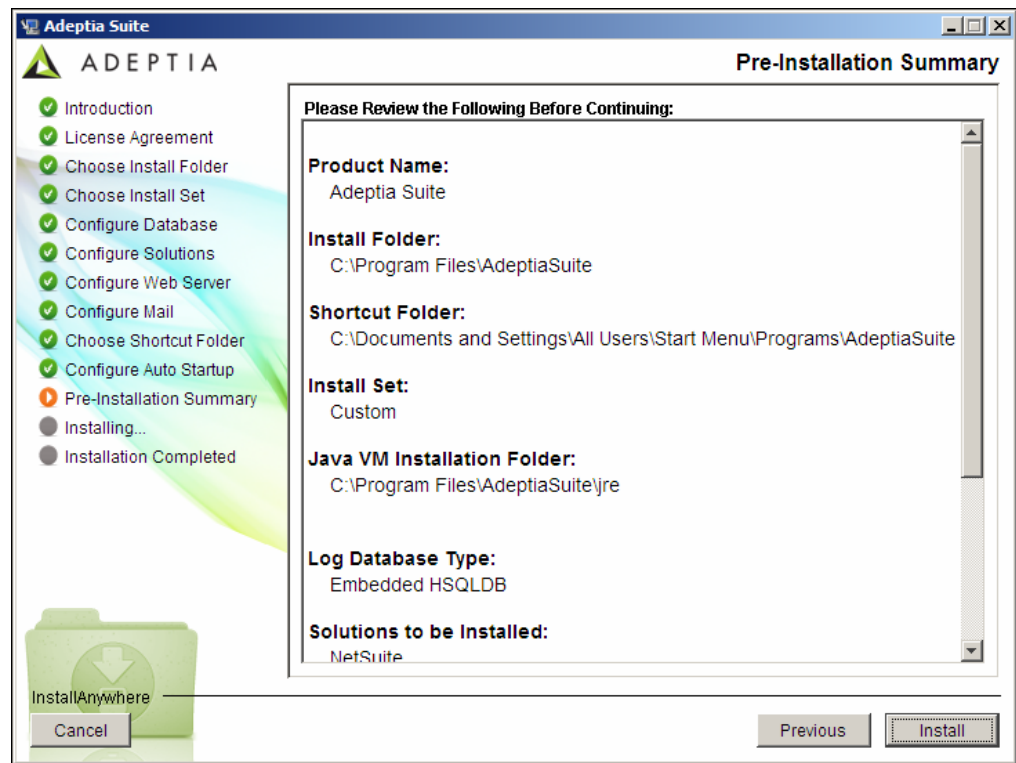


Figure 4.13: Pre-Installation Summary

34. This screen displays a brief summary for all settings selected while installing Adeptia Suite. To begin the installation, click **Install** button. This displays the Installing screen (see Figure 4.14).

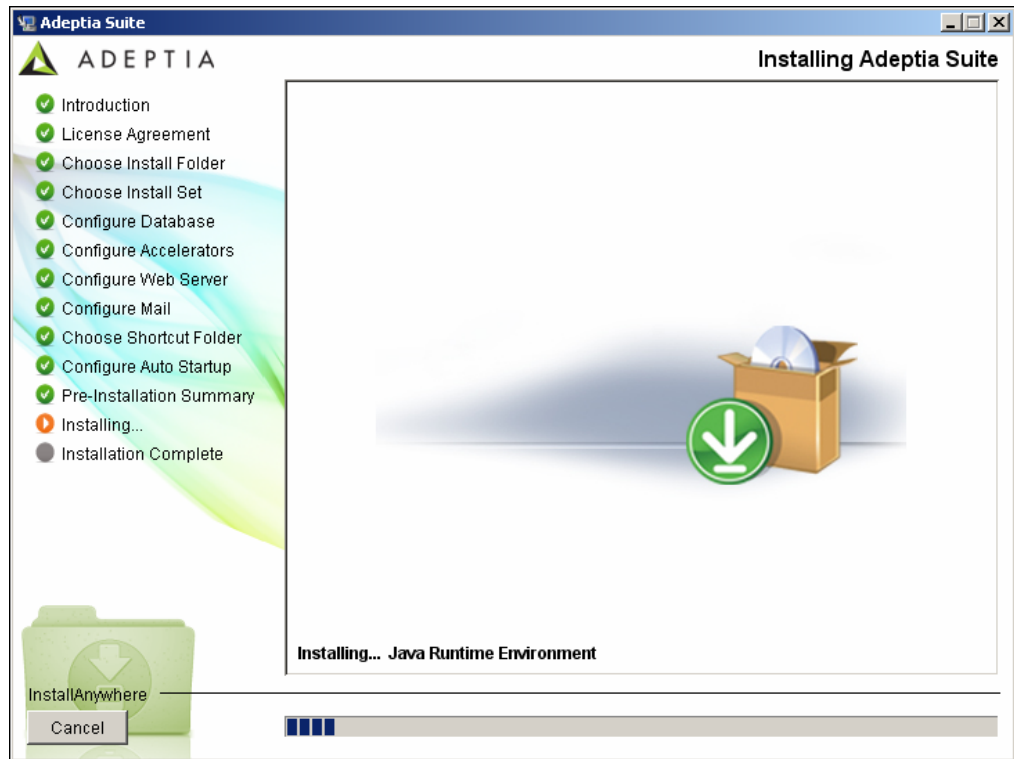


Figure 4.14: Installing Adeptia Suite

35. Once the installing process is complete, the Install Complete screen is displayed (see Figure 4.15).

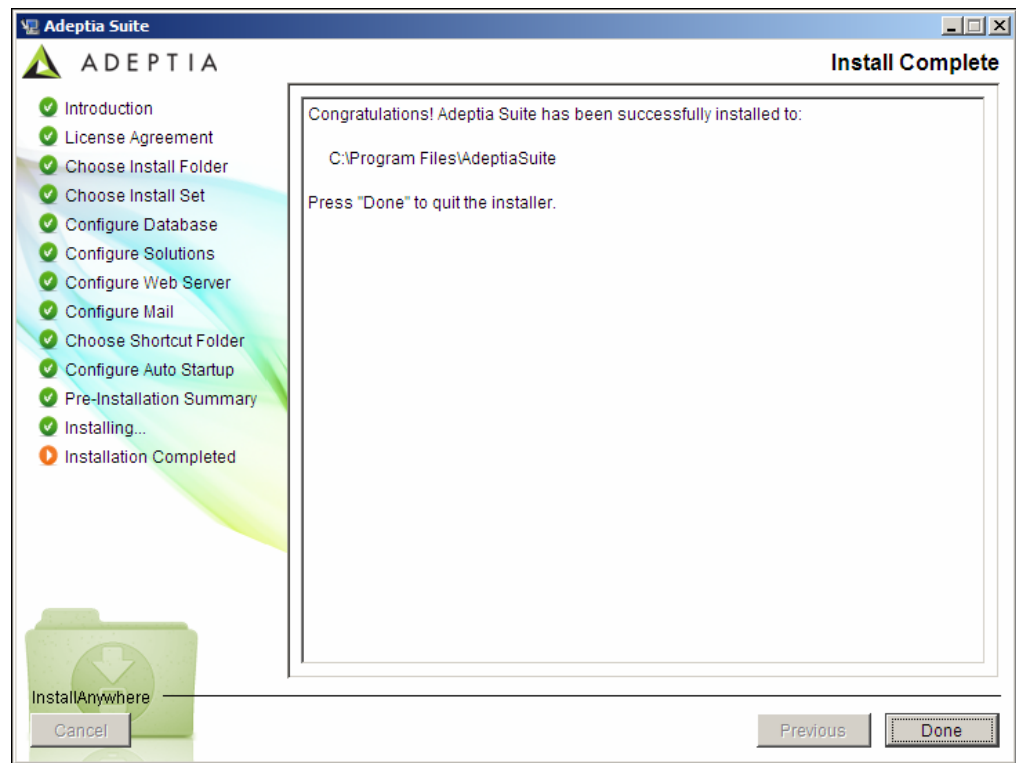


Figure 4.15: Install Complete

36. Click **Done** button to exit the installation wizard.



Once Adeptia Suite is installed successfully, the log file (*AdeptiaSuite\_InstallLog.log*) is created in the folder where you have installed the Adeptia Suite. However if installation fails, then the log file is created in the folder from which *install.exe* or *install.bin* is executed.

## INSTALLING ADEPTIA SUITE IN CONSOLE MODE

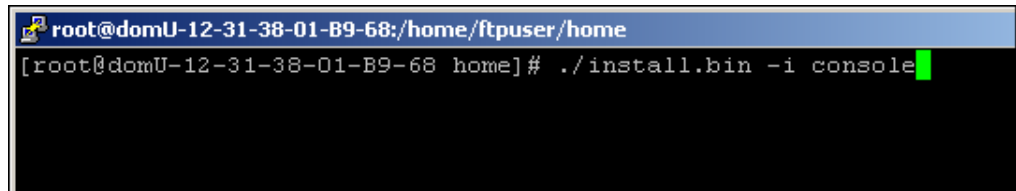
The process of installing Adeptia Suite in Console mode is similar to that of installing it in GUI mode, with minor differences. Just the initial startup is explained in this section.

### *Steps to install Adeptia Suite in Console mode:*

1. Unzip the ***AdeptiaSuite<Version>\_<OS>.zip*** file and save its contents in a directory. Here **<Version>** is the version of Adeptia Suite and **<OS>** is the operating system.

2. To install Adeptia Suite in Console mode in Windows, type the command, <install.exe -i console> from the directory where you have extracted the ZIP file.

To install Adeptia Suite on Linux or Solaris, type the command, <./install.bin -i console> (see Figure 4.16).

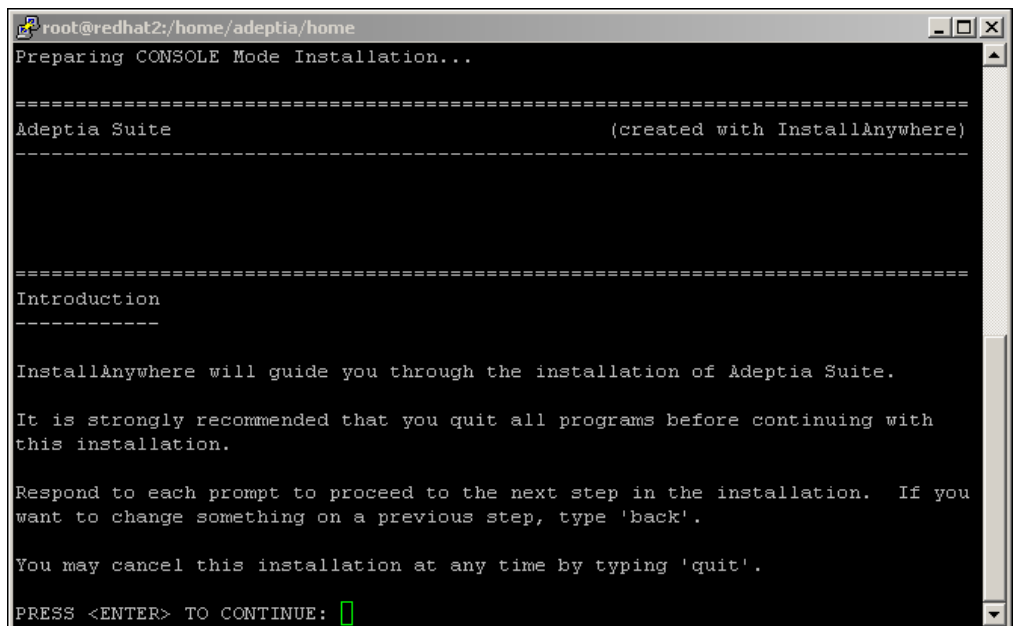


```

root@domU-12-31-38-01-B9-68:/home/ftpuser/home
[root@domU-12-31-38-01-B9-68 home]# ./install.bin -i console
  
```

Figure 4.16: Starting Adeptia Suite Installation in Console Mode

3. This starts the Installation process and displays the Introduction screen (see Figure 4.17).



```

root@redhat2:/home/adeptia/home
Preparing CONSOLE Mode Installation...

=====
Adeptia Suite                                     (created with InstallAnywhere)
=====

Introduction
-----

InstallAnywhere will guide you through the installation of Adeptia Suite.

It is strongly recommended that you quit all programs before continuing with
this installation.

Respond to each prompt to proceed to the next step in the installation.  If you
want to change something on a previous step, type 'back'.

You may cancel this installation at any time by typing 'quit'.

PRESS <ENTER> TO CONTINUE:
  
```

Figure 4.17: Introduction

4. Press <ENTER> key. This displays the License Agreement screen (see Figure 4.18).

```

root@redhat2:/home/adeptia/home
to be deployed in production environment with an "evaluation license".

PRESS <ENTER> TO CONTINUE:

12. If this product is used with an "Express Edition annual renewable license",
it is allowed to be used in a production environment for commercial use
provided the usage constraints as mandated by the Express license are observed.
Further, only one instance may be deployed in production per company.

13. You must not make copies of this product or allow distribution to any
third-party. It may only be downloaded from the Adeptia website after proper
registration.

14. You must not make copies of the license file of this product or allow
distribution to any third-party. Evaluation or production license may only be
requested directly from Adeptia.

DO YOU ACCEPT THE TERMS OF THIS LICENSE AGREEMENT? (Y/N): █

```

Figure 4.18: License Agreement

5. Type 'Y' and press <Enter>. The Choose Install Folder screen is displayed (see Figure 4.19).

```

root@redhat2:/home/adeptia/home
distribution to any third-party. Evaluation or production license may only be
requested directly from Adeptia.

DO YOU ACCEPT THE TERMS OF THIS LICENSE AGREEMENT? (Y/N): y

=====
Choose Install Folder
=====

Please choose a destination folder for this installation.

Where would you like to install?

    Default Install Folder: /usr/local/bin/AdeptiaSuite

ENTER AN ABSOLUTE PATH, OR PRESS <ENTER> TO ACCEPT THE DEFAULT
: █

```

Figure 4.19: Choose Install Folder

6. Type absolute path of the directory where you want to install Adeptia Suite, or press <Enter> to accept default path. This displays the Choose Install Set screen (see Figure 4.20).



```

root@redhat2:/home/adeptia/home
-----
Please choose a destination folder for this installation.
Where would you like to install?

  Default Install Folder: /usr/local/bin/AdeptiaSuite
ENTER AN ABSOLUTE PATH, OR PRESS <ENTER> TO ACCEPT THE DEFAULT
:


=====
Choose Install Set
-----
Please choose the Install Set to be installed by this installer.

->1- Express
   2- Custom
ENTER THE NUMBER FOR THE INSTALL SET, OR PRESS <ENTER> TO ACCEPT THE DEFAULT
:

```

Figure 4.20: Choose Install Set

7. Type the number (1 or 2) to select the install set or press **<Enter>** to accept the default set (denoted by -> key). This displays the Pre-Installation Summary and then starts installing Adeptia Suite.

	To go to previous menu, type <i>back</i> and press <Enter>.
-------------------------------------------------------------------------------------	-------------------------------------------------------------

## 5 UPDATING LICENSE

This section explains how to update a new license in case your license is expired and you get a new license. This section applies only if Adeptia Suite is already installed and you want to update the license.

If you are installing Adeptia Suite for the first time, skip this section, as license is already bundled with the installer.

### Pre-Requirement:

- Ensure that the Kernel and WebRunner are not running.

## UPDATING LICENSE ON WINDOWS

### Steps to update the license:

1. Click **Start > Programs > AdeptiaSuite** and then select **Update License**. The License Wizard appears (see Figure 5.1).

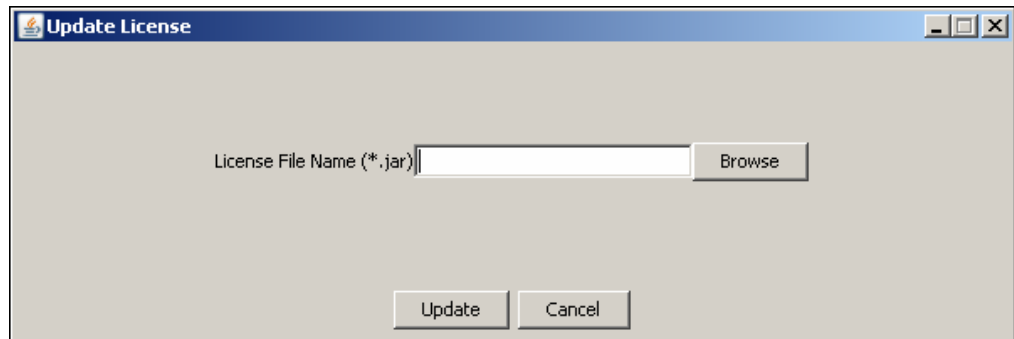


Figure 5.1: Select License File

2. Click **Browse** and select the *License.jar* file. The path of the selected file is shown in the *License File Name (\*.jar)* field (see Figure 5.2).

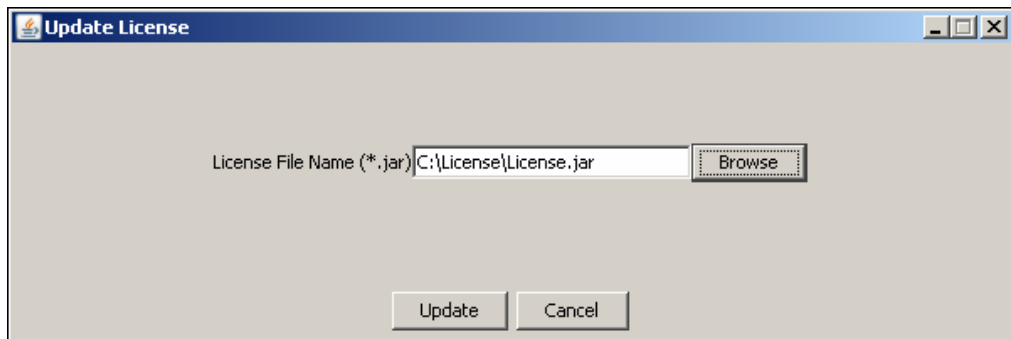


Figure 5.2: License File Path

3. Click **Update**. A warning message is displayed (see Figure 5.3).

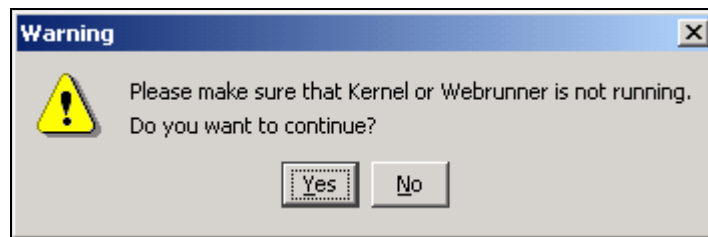


Figure 5.3: Warning Message

4. Make sure that Kernel and WebRunner are not running and click **Yes**. A dialog box appears confirming that the license is updated successfully (see Figure 5.4).

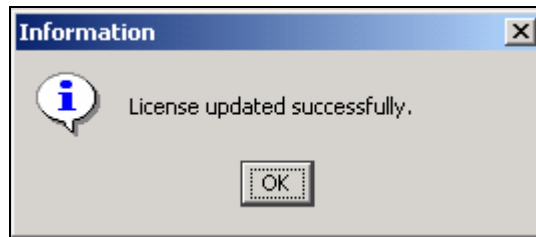


Figure 5.4: Confirmation Message

5. Click **OK** to close the dialog box.

## UPDATING LICENSE ON LINUX/SOLARIS

To update the license on Linux or Solaris, you just need to copy the *License.jar* file in the **<InstallFolder>ServerKernel\etc** folder.

## 6 RUNNING ADEPTIA SUITE

This section guides you on how to start and access the Adeptia Suite. In order to access it, you need to first start the Kernel and Webrunner and then login into it.

### STARTING KERNEL AND WEB RUNNER ON WINDOWS

Before accessing the Adeptia Suite, you must start the Kernel and WebRunner.

You can start the Kernel and WebRunner on Windows in two ways:

- [As a Service](#)
- [From Start Menu/Desktop](#)

#### Starting Kernel and WebRunner as a Service

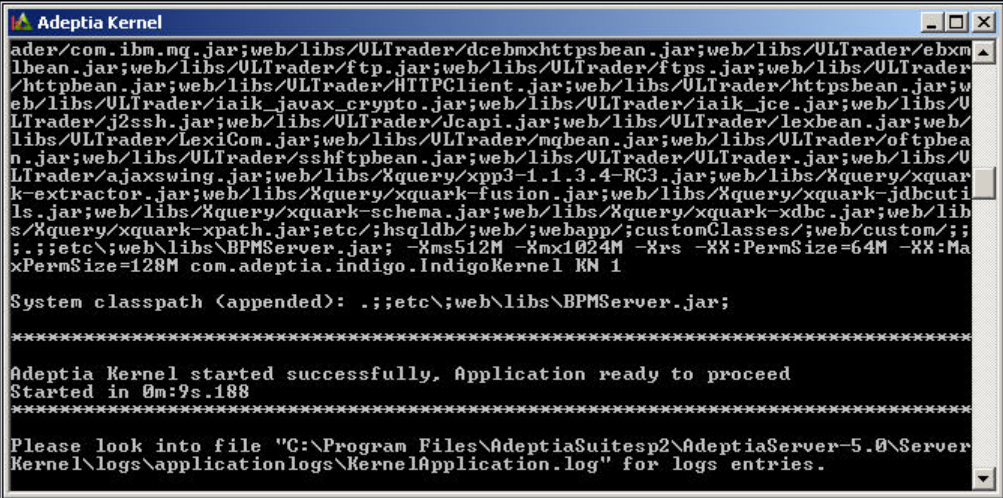
If you install Adeptia Suite as service, you can start Kernel and WebRunner as a service in two ways:

- **Auto** : This implies that Adeptia Suite Kernel and WebRunner will automatically start, once Windows is started on your system.
- **Manual**: This implies that you have to manually start Adeptia Suite Kernel and WebRunner from the Control Panel > Administrative Tools > Services, once Windows is started on your system.

When you install Adeptia Suite as a Service, there is a field for selecting the *Service Start Type*, while configuring the Windows Service (refer to *Figure 4.12*). You can select it as *Auto* or *Manual*. By default, *Auto* is selected.

#### Starting Kernel and WebRunner from Start Menu/Desktop

1. Click **Start > Programs > Adeptia Suite** and then select **Adeptia Suite Kernel**. Alternately, double-click the **Adeptia Suite Kernel** shortcut on the Desktop. The console window with the kernel message is displayed (see *Figure 6.1*).



```

Adeptia Kernel
ader/com.ibm.mq.jar;web/libs/ULTrader/dcebmhttpsbean.jar;web/libs/ULTrader/ebxm
lbean.jar;web/libs/ULTrader/ftp.jar;web/libs/ULTrader/ftps.jar;web/libs/ULTrader
/httpbean.jar;web/libs/ULTrader/HTTPClient.jar;web/libs/ULTrader/httpsbean.jar;w
eb/libs/ULTrader/iaik_javax_crypto.jar;web/libs/ULTrader/iaik_jce.jar;web/libs/U
LTrader/j2ssh.jar;web/libs/ULTrader/Jcapi.jar;web/libs/ULTrader/lexbean.jar;web/
libs/ULTrader/LexiCom.jar;web/libs/ULTrader/mqbean.jar;web/libs/ULTrader/oftpbea
n.jar;web/libs/ULTrader/sshftpbean.jar;web/libs/ULTrader/ULTrader.jar;web/libs/U
LTrader/ajaxswing.jar;web/libs/Xquery/xpp3-1.1.3.4-RC3.jar;web/libs/Xquery/xquar
k-extractor.jar;web/libs/Xquery/xquark-fusion.jar;web/libs/Xquery/xquark-jdbcuti
ls.jar;web/libs/Xquery/xquark-schema.jar;web/libs/Xquery/xquark-xdbc.jar;web/lib
s/Xquery/xquark-xpath.jar;etc;/hsqldb/web/webapp/customClasses/web/custom/;
.;etc\web\libs\BPMServer.jar; -Xms512M -Xmx1024M -Xrs -XX:PermSize=64M -XX:Ma
xPermSize=128M com.adeptia.indigo.IndigoKernel KM 1

System classpath (appended): .;etc\web\libs\BPMServer.jar;

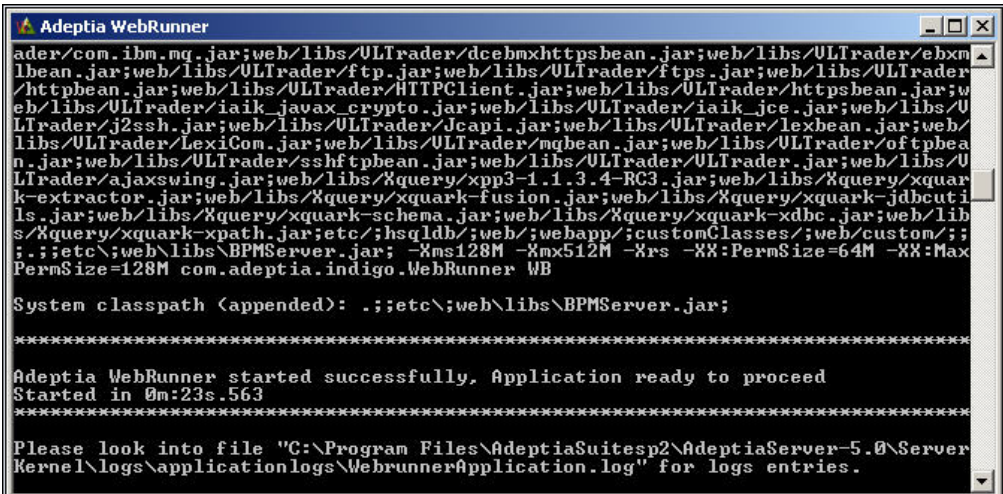
*****

Adeptia Kernel started successfully, Application ready to proceed
Started in 0m:9s.188
*****

Please look into file "C:\Program Files\AdeptiaSuitesp2\AdeptiaServer-5.0\Server
Kernel\logs\applicationlogs\KernelApplication.log" for logs entries.
  
```

Figure 6.1: Starting Adeptia Suite Kernel

2. Check the kernel console for a message displaying time taken by the kernel to start. For example, '**Started in 0m:9s.188**' implies that the kernel started in 9 seconds and 188 milliseconds.
3. Click **Start > Programs > Adeptia Suite** and then select **Adeptia Suite WebRunner** to start the Adeptia Suite WebRunner. Alternately, double-click the **Adeptia Suite WebRunner** shortcut on the Desktop. A new console window with the Web Runner message is displayed (see Figure 6.2).



```

Adeptia WebRunner
ader/com.ibm.mq.jar;web/libs/ULTrader/dcebmhttpsbean.jar;web/libs/ULTrader/ebxm
lbean.jar;web/libs/ULTrader/ftp.jar;web/libs/ULTrader/ftps.jar;web/libs/ULTrader
/httpbean.jar;web/libs/ULTrader/HTTPClient.jar;web/libs/ULTrader/httpsbean.jar;w
eb/libs/ULTrader/iaik_javax_crypto.jar;web/libs/ULTrader/iaik_jce.jar;web/libs/U
LTrader/j2ssh.jar;web/libs/ULTrader/Jcapi.jar;web/libs/ULTrader/lexbean.jar;web/
libs/ULTrader/LexiCom.jar;web/libs/ULTrader/mqbean.jar;web/libs/ULTrader/oftpbea
n.jar;web/libs/ULTrader/sshftpbean.jar;web/libs/ULTrader/ULTrader.jar;web/libs/U
LTrader/ajaxswing.jar;web/libs/Xquery/xpp3-1.1.3.4-RC3.jar;web/libs/Xquery/xquar
k-extractor.jar;web/libs/Xquery/xquark-fusion.jar;web/libs/Xquery/xquark-jdbcuti
ls.jar;web/libs/Xquery/xquark-schema.jar;web/libs/Xquery/xquark-xdbc.jar;web/lib
s/Xquery/xquark-xpath.jar;etc;/hsqldb/web/webapp/customClasses/web/custom/;
.;etc\web\libs\BPMServer.jar; -Xms128M -Xmx512M -Xrs -XX:PermSize=64M -XX:Ma
xPermSize=128M com.adeptia.indigo.WebRunner WB

System classpath (appended): .;etc\web\libs\BPMServer.jar;


*****

Adeptia WebRunner started successfully, Application ready to proceed
Started in 0m:23s.563
*****

Please look into file "C:\Program Files\AdeptiaSuitesp2\AdeptiaServer-5.0\Server
Kernel\logs\applicationlogs\WebrunnerApplication.log" for logs entries.
  
```

Figure 6.2: Starting Adeptia Suite WebRunner

4. Check the WebRunner console for a message displaying time taken by the WebRunner to start. For example, '**Started in 0m: 23s.563**' implies that the WebRunner started in 23 seconds and 563 milliseconds.

	<p>To stop the Kernel and WebRunner, use <b>&lt;Control&gt;+ &lt;C&gt;</b>. , <b>&lt;Control &gt; + &lt;C&gt;</b> stops the kernel instantly terminating all transactions. If you close Kernel and WebRunner DOS windows by clicking on the cross (close) button, Java Virtual Machine (JVM) used by Adeptia Suite may not shut down properly.</p> <p>At anytime, if you encounter the following error in the Kernel or WebRunner screens:</p> <p style="text-align: center;"><i>java.lang.OutOfMemoryError: PermGen space</i></p> <p>You need to change the memory settings for JVM. For details, refer to <a href="#">Changing Memory Settings for JVM</a> section.</p>
-----------------------------------------------------------------------------------	---------------------------------------------------------------------------------------------------------------------------------------------------------------------------------------------------------------------------------------------------------------------------------------------------------------------------------------------------------------------------------------------------------------------------------------------------------------------------------------------------------------------------------------------------------------------------------------------------------------------------------------------------------------------------

## STARTING ADEPTIA SUITE KERNEL AND WEBRUNNER ON LINUX AND SOLARIS

This section explains how to start Adeptia Suite Kernel and WebRunner on Linux and Solaris.

### **Steps to start Adeptia Suite Kernel and WebRunner on Linux and Solaris:**

1. Login in the machine/server using same id which was used for installation.
2. Change directory where Adeptia Suite is installed using following command:

```
cd /usr/local/bin/AdeptiaSuite/AdeptiaServer-5.0/ServerKernel/
```

3. Ensure the *startup.sh* file has *Execute* permission using following command:

```
ls -l startup.sh
```

#### *Example*

```
[root@domU-12-31-38-01-B9-68 ServerKernel]# ls -l startup.sh
-rwxrwxr-x 1 root root 2931 Nov 17 23:28 startup.sh
[root@domU-12-31-38-01-B9-68 ServerKernel]# █
```

4. Execute *startup.sh* using following command:

```
./startup.sh
```



This command starts both Kernel and Webrunner.

5. To ensure that the Adeptia Suite Kernel and WebRunner are started successfully, enter the following commands in the *ServerKernel* folder:

***cat kernel.out***

and

***cat webrunner.out***

These commands show the *kernel.out* and *webrunner.out* file respectively. Make sure that these files contain the message that “Kernel has started successfully” and “WebRunner has started successfully”.



When you execute the *./startup.sh* file to start Kernel and WebRunner, *config.log* file is generated in the */usr/local/bin/AdeptiaSuite/AdeptiaServer-5.0/ServerKernel/* folder. This file contains information which is important for troubleshooting. If you need to contact Tech Support, email this file.



- Kernel and WebRunner can be started in any of the ways discussed above, but the output of the Kernel and the WebRunner is always written into *KernelApplication.log* and *WebrunnerApplication.log* files respectively. These files are located in *<AdeptiaServerInstallFolder>/AdeptiaServer-5.0/ServerKernel/logs/applicationlogs* folder of Adeptia Suite. To change the location of these files, you need to set the values of *abpm.kernelout.file.location* and *abpm.webrunnerout.file.location* properties for Kernel and WebRunner respectively. To know how to change the value of these properties, refer to the Administrator Guide for details.
- The maximum size of any of these file can be up to 20 MB. When this size is reached, the existing file is renamed with the current date and time stamp added to the original file name. Now, a new file is created with the same name as that of the original file and the output of the Kernel (or WebRunner) is written into this new file.
- To change the size of above said files, you need to set the values of *abpm.kernelout.file.maxSize* and *abpm.webrunnerout.file.maxSize* properties respectively. To know how to change these properties refer to the *Updating System Properties* section of Administrator Guide for details.

## LOGIN INTO ADEPTIA SUITE

### Pre-requisites:

Kernel and WebRunner must be started before login into Adeptia Suite. To know how to start the Kernel and WebRunner refer to the previous section.

### Steps to login into the Adeptia Suite:

1. Click **Start > Programs > Internet Explorer**. The Internet Explorer web browser window is displayed.
2. Type <http://hostname:8080/adeptia/control/> in the URL field and then press **Enter**. This displays the Adeptia Suite Login screen (see Figure 6.3).



	<ul style="list-style-type: none"> <li>▪ “hostname” in the address is the name of the Server on which Adeptia Suite is running. For example if the Adeptia Suite is running on a Server named Adeptia, the URL will be <a href="http://adeptia:8080/adeptia/control/">http://adeptia:8080/adeptia/control/</a></li> <li>▪ If Adeptia Suite is running on local machine, the URL will be <a href="http://localhost:8080/adeptia/control/">http://localhost:8080/adeptia/control/</a></li> <li>▪ The Adeptia Suite is tested only on Internet Explorer.</li> </ul>
-----------------------------------------------------------------------------------	--------------------------------------------------------------------------------------------------------------------------------------------------------------------------------------------------------------------------------------------------------------------------------------------------------------------------------------------------------------------------------------------------------------------------------------------------------------------------------------------------------------------------------------------------------------------------



Figure 6.3: Adeptia Suite Login Screen

3. Enter User ID and Password in their respective fields.


	<ul style="list-style-type: none"> <li>▪ Default User ID is <b>admin</b> and the password is <b>indigo1</b>.</li> <li>▪ The password should be a minimum of 6 characters in length and should include a numeric value.</li> <li>▪ The password will expire after the number of days specified in the <i>Value</i> field, while setting the <i>Expiry Days</i> property. For example. If this value is set to 30, then the password will expire after 30 days. If this value is set to 0, then the password will not expire. Additionally, you can generate a password expiry warning to be displayed at the time of login. For example, if 5 is specified in the <i>Value</i> field, while setting the <i>Expiry Message Flash</i> property, then a warning will be displayed 5 days before the password is to expire. It will be displayed each time you login.</li> <li>▪ If the password is already expired, then the Change Password screen</li> </ul>
-------------------------------------------------------------------------------------	------------------------------------------------------------------------------------------------------------------------------------------------------------------------------------------------------------------------------------------------------------------------------------------------------------------------------------------------------------------------------------------------------------------------------------------------------------------------------------------------------------------------------------------------------------------------------------------------------------------------------------------------------------------------------------------------------------------------------------------------------------------------------------------------------------------------------------------------------------------------------------------------------------------------------------------------------------



is displayed at the time of login.

- It is mandatory to save all activities before changing the password. Else, the changes will not be reflected in the activities.

4. Click the **Submit** button. The next screen is displayed, based on the user's workgroup. If the user is a member of more than one group, then the login screen is displayed again, with the *Group* field (see Figure 6.4). Else the Adeptia Suite Home Page is displayed with details associated with the logged in user's group.




The *Group* drop-down menu is populated with only those groups of which the logged in user is a member.



Figure 6.4: Adeptia Suite Select Group Screen

5. Select the group with which the user wants to login, from the *Group* drop-down list.



A user can be a member of more than one group. But he can login and access objects associated with one group at a time. For example, a user is a member of two groups: *Administrators* and *Executives*. Both these groups vary in terms of objects. He can login as a member of either the *Administrators* or the *Executives* group at a time.

6. Click **Submit**. The Adeptia Suite Home Page is displayed with details associated with the selected user group (see Figure 6.5).

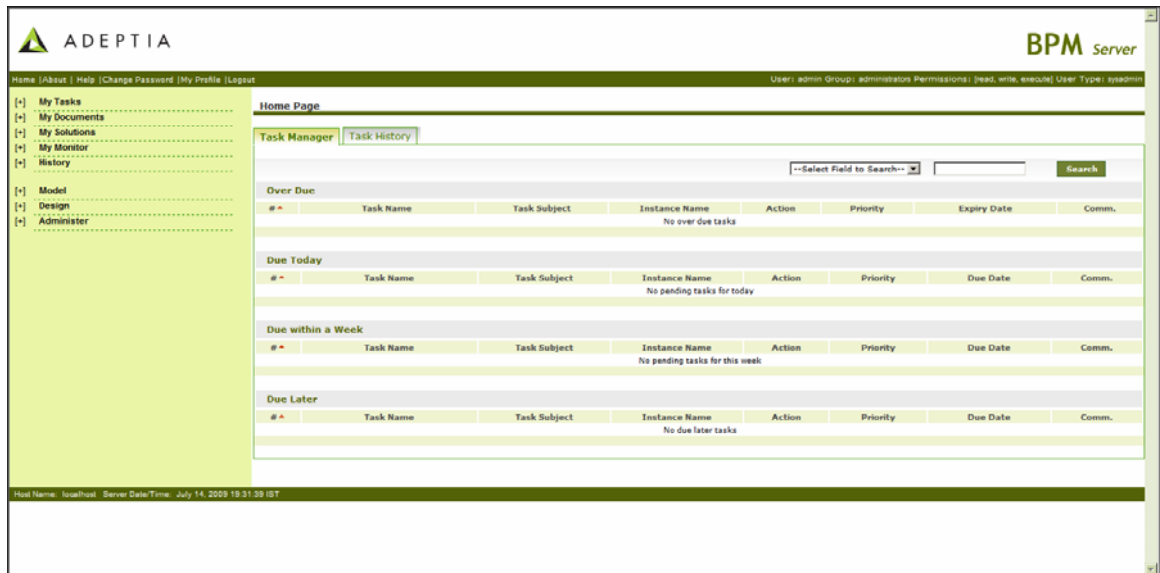



Figure 6.5: Adeptia Suite Homepage



- By default you are logged in the *Standard* mode. If you want to login into the **Secure** mode, use the following URL to login into Adeptia Suite:  
<https://hostname:8443/adeptia/control/>
- Click **Yes** to close the Security Alert dialog box.
- When you login into the **Secure** mode, the data transfer from your PC to the Server happens in encrypted form and through a secure channel.
- To learn how to use Adeptia Suite, refer to the Adeptia Suite User Guide.

## STOPPING KERNEL AND WEBRUNNER ON LINUX AND SOLARIS

This section explains how to stop the kernel and webrunner on Linux and Solaris.

### *Steps to stop the Kernel and WebRunner on Linux and Solaris*

1. Ensure the `stop.sh` or file has *Execute* permission.
2. Execute `stop.sh` file from `/usr/local/bin/AdeptiaSuite/AdeptiaSuite-5.0/ServerKernel/` folder using the command:

**`./stop.sh`**

## 7 UNINSTALLING ADEPTIA SUITE FROM WINDOWS

### Pre-Requisites:

- Make sure that Kernel and WebRunner are stopped.
- Create the backup of any important folder in Adeptia Suite installation directory, which you want to keep for future.

### Steps to uninstall Adeptia Suite for Windows:

1. Stop Adeptia Suite Kernel and WebRunner.
2. Click **Start > Programs > AdeptiaSuite** and then select **Uninstall Adeptia Suite**. The Adeptia Suite Uninstallation screen is displayed (see Figure 7.1).

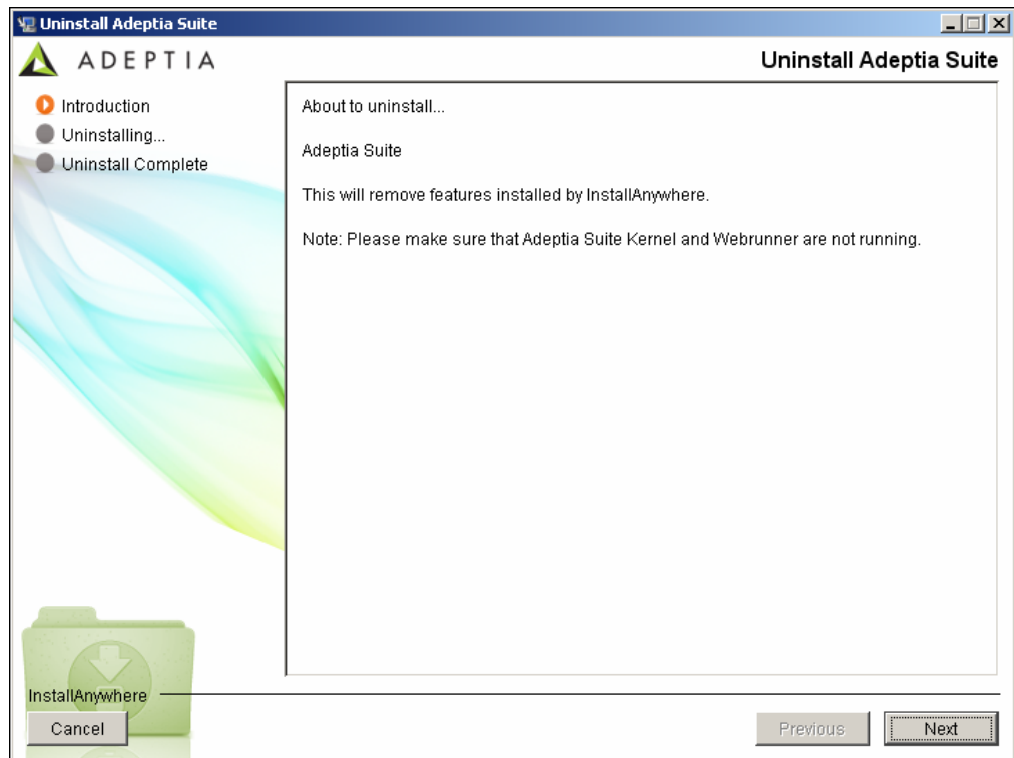


Figure 7.1: Confirm Adeptia Suite Uninstallation

3. Click **Yes** button, if you want to uninstall the Adeptia Suite. This starts the Uninstallation process and displays Uninstalling Adeptia Suite screen (see Figure 7.2).

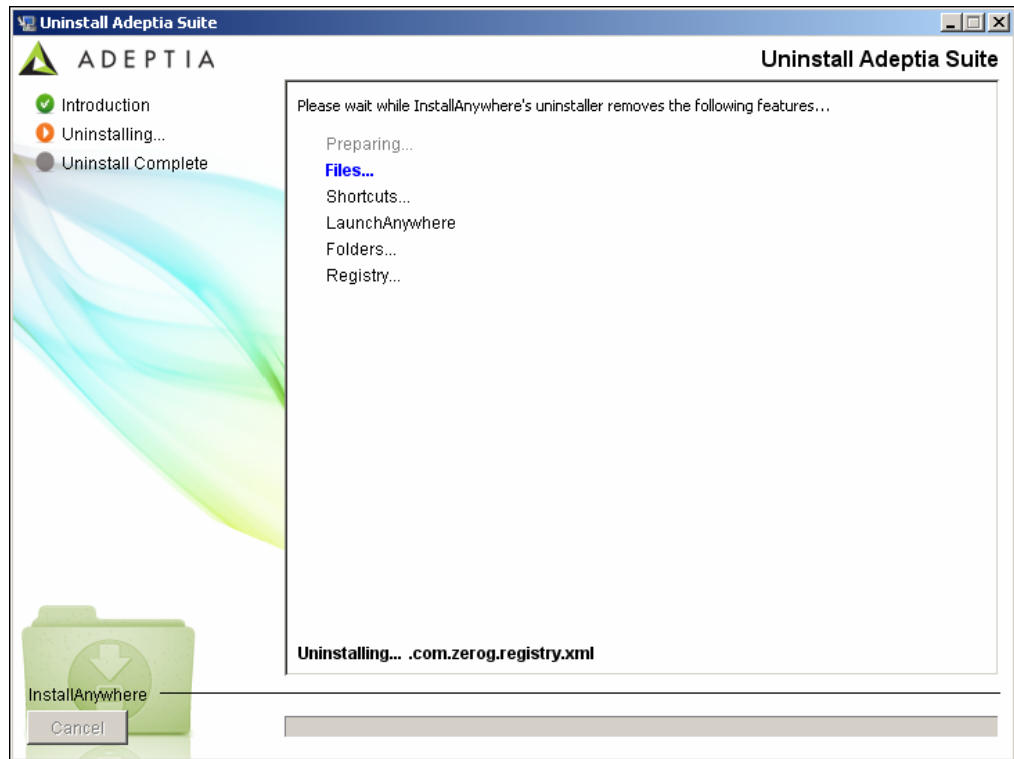


Figure 7.2: Uninstalling Adeptia Suite

4. Once the uninstallation process is complete, the Uninstallation Completed screen is displayed (see Figure 7.3).

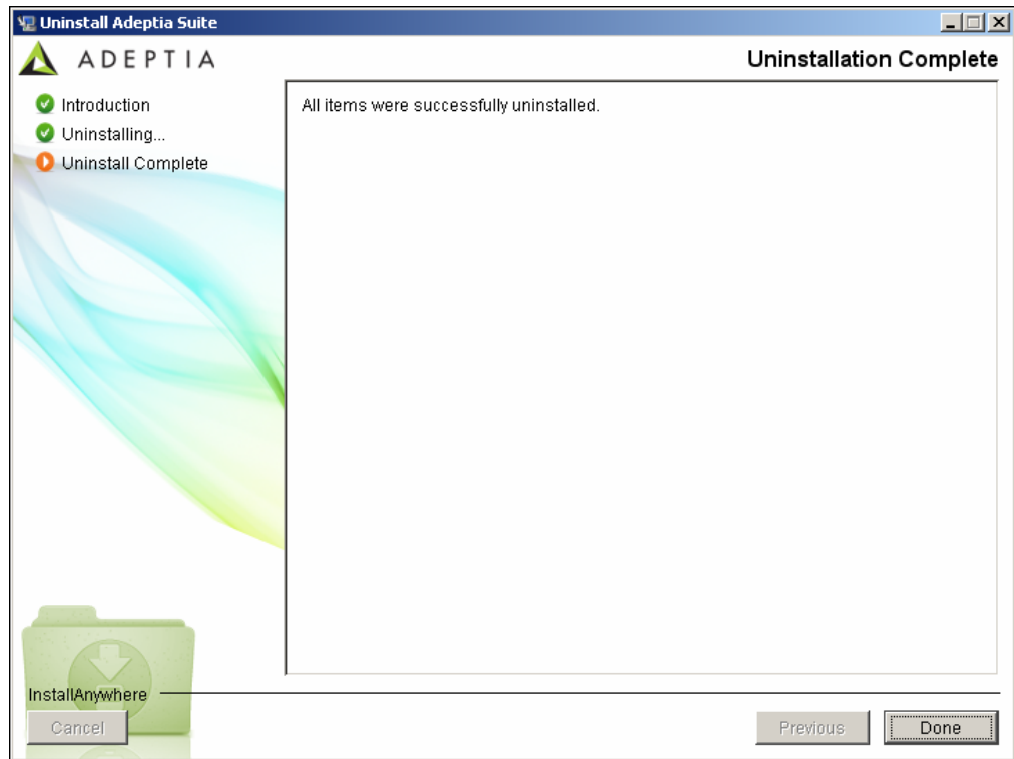


Figure 7.3: Uninstallation Complete

5. Click **Finished** button to exit the uninstaller.

## 8 CHANGING MEMORY SETTINGS FOR JVM

If you encounter the following error on Adeptia Kernel and WebRunner screens:

*java.lang.OutOfMemoryError: PermGen space*

you need to change some memory settings for JVM.

### ***Steps to change memory settings for JVM:***

1. Stop the Kernel and WebRunner.
2. Open the **launcher.properties** file from the **<AdeptiaServerInstallFolder>/AdeptiaServer-5.0/ServerKernel/etc/** folder and change the JVM settings for Kernel and WebRunner (see Figure 8.1)


```
#Kernel JVM parameters
KN:JVM: -Xms512M -Xmx1024M -Xrs -XX:PermSize=64M -XX:MaxPermSize=128M

#Webrunner JVM parameters
WB:JVM: -Xms128M -Xmx512M -Xrs -XX:PermSize=64M -XX:MaxPermSize=128M

#Class folder
DIR: etc/;hsqldb/;web/;webapp/;customClasses/;web/custom/;

#Separate classes
CLASSES:
```

Figure 8.1: Change Memory Settings for JVM

	The JVM settings that you need to change are marked in bold. Total value (Sum of <code>-Xmx</code> and <code>MaxPremSize</code> ) should not be more than the available JVM.
-----------------------------------------------------------------------------------	------------------------------------------------------------------------------------------------------------------------------------------------------------------------------

## 9 DISABLING JRE AUTO UPDATE

### *Steps to disable JRE Auto Update*

1. Go to Start > Control Panel.
2. Double click the Java icon.
3. Click *Update* tab and uncheck the *Check for Updated Automatically* checkbox.
4. Click *Apply* button.
5. Click *Advanced* tab, expand *JRE Auto-Download* and select *Never Auto\_Download*.

## 10 ABOUT ADEPTIA INC.

Adeptia, an enterprise software company headquartered in Chicago, Illinois, provides a business process integration technology to easily and quickly automate business processes using industry-specific standards. Adeptia's unique product combines business process management with business-to-business integration. Adeptia's reusable and highly scalable technology has been deployed by Fortune 1000 companies. For more information, visit [www.adeptia.com](http://www.adeptia.com).

Adeptia Headquarters  
443 North Clark St, Suite 350  
Chicago, IL 60654  
USA  
Email: [info@adeptia.com](mailto:info@adeptia.com)

Adeptia India R&D Centre  
D-74, Sector 63,  
Noida, U.P. - 201301  
India

## 11 TABLE OF FIGURES

Figure 4.1: Introduction Screen.....	8
Figure 4.2: License Agreement.....	9
Figure 4.3: Choose Install Folder.....	10
Figure 4.4: Choose Install Set.....	11
Figure 4.5: Configure Log Database.....	12
Figure 4.6: Configure Log Database (Populated Fields).....	13
Figure 4.7: Configure Accelerators.....	14
Figure 4.8: Configure Web Server.....	15
Figure 4.9: Configure Mail.....	16
Figure 4.10: Choose Shortcut Folder.....	17
Figure 4.11: Add Shortcut to Desktop.....	17
Figure 4.12: Configure Auto Startup.....	18
Figure 4.13: Pre-Installation Summary.....	19
Figure 4.14: Installing Adeptia Suite.....	20
Figure 4.15: Install Complete.....	21
Figure 4.16: Starting Adeptia Suite Installation in Console Mode.....	22
Figure 4.17: Introduction.....	22
Figure 4.18: License Agreement.....	23
Figure 4.19: Choose Install Folder.....	23
Figure 4.20: Choose Install Set.....	24
Figure 5.1: Select License File.....	25
Figure 5.2: License File Path.....	25
Figure 5.3: Warning Message.....	25
Figure 5.4: Confirmation Message.....	26
Figure 6.1: Starting Adeptia Suite Kernel.....	28
Figure 6.2: Starting Adeptia Suite WebRunner.....	28
Figure 6.3: Adeptia Suite Login Screen.....	31
Figure 6.4: Adeptia Suite Select Group Screen.....	32
Figure 6.5: Adeptia Suite Homepage.....	33
Figure 7.1: Confirm Adeptia Suite Uninstallation.....	34
Figure 7.2: Uninstalling Adeptia Suite.....	35
Figure 7.3: Uninstallation Complete.....	36
Figure 8.1: Change Memory Settings for JVM.....	37