



ADEPTIA

Adeptia Suite 6.2 SP1

Installation Guide

Last Updated: June 9, 2015

Adeptia Inc.
443 North Clark Ave,
Suite 350
Chicago, IL 60610, USA
Phone: (312) 229-1727

DOCUMENT INFORMATION

Adeptia Suite

Installation Guide

Adeptia Suite Version 6.2 Service Pack 1 (SP1)

Printed June 2015

Printed in USA

Adeptia Support Information

For support queries, please contact us at support@adeptia.com.

Visit our website at:

www.adeptia.com

Copyright

Copyright © 2000-2015 Adeptia, Inc. All rights reserved.

Trademarks

Adeptia™ is a trademark of Adeptia, Inc. All other trademarks and registered trademarks are the property of their respective owners.

Confidentiality

The information set forth herein represents the **CONFIDENTIAL AND PROPRIETARY INFORMATION of Adeptia**. Such information shall only be used for the express purpose authorized by Adeptia and shall not be published, communicated, disclosed or divulged to any person, firm, corporation or legal entity, directly or indirectly, or to any third person without the prior written consent of Adeptia.

Disclaimer

Adeptia, Inc. provides this publication "as is" without warranty of any kind, either express or implied. In no event shall Adeptia be liable for any loss of profits, loss of business, loss of use or data, interruption of business, or for any indirect, special, punitive, incidental, or consequential damages of any kind.

No part of this work covered by Adeptia © herein is to be reproduced in any form or by any means — graphic, electronic, or mechanical — including photocopying, recording, taping, or storage in an information retrieval system, without prior written permission from Adeptia.

This publication is subject to replacement by a later edition. To determine if a later edition exists, contact

www.adeptia.com.

TABLE OF CONTENTS

Table of Contents	3
Preface	5
<i>Target Audience</i>	5
<i>Other resource materials</i>	5
<i>About this guide</i>	6
<i>Conventions</i>	6
Typographical conventions.....	7
Graphical conventions	7
<i>Contacts/Reporting problems</i>	7
Sales.....	7
Support	8
Latest updates and information	8
Adeptia Website	8
Pre-Installation Requirements	9
<i>Hardware and Operating System Requirements</i>	9
<i>Database Requirements</i>	9
<i>Software Requirements For Server</i>	9
<i>Software Requirements For Client</i>	10
Downloading Adeptia Suite Product	11
Installing Adeptia Suite	12
<i>Pre-requisites</i>	12
<i>Installing Adeptia Suite in GUI Mode</i>	12
<i>Installing Adeptia Suite in Console Mode</i>	25
Updating License	28
<i>Pre-requisites</i>	28
<i>Updating Licence on Windows</i>	29
<i>Updating License on Linux/Solaris</i>	30
Running Adeptia Suite	31
<i>Starting Kernel and WebRunner on Windows</i>	31
Starting Kernel and WebRunner as a Service	31
Starting Kernel and WebRunner from Start Menu/Desktop	32
<i>Starting Adeptia Suite Kernel and WebRunner on Linux and Solaris</i>	32
<i>Login into Adeptia Suite</i>	34
<i>Stopping Kernel and WebRunner on Linux and Solaris</i>	37

Uninstalling Adeptia Suite from Windows	38
<i>Pre-requisites</i>	38
Changing Memory Settings For JVM	41
Steps to change memory settings for JVM	41
Disabling JRE Auto Update	43
Troubleshooting	45
Table of Figures	46
Index.....	47

PREFACE

This document provides you the guidelines for installing Adeptia Suite on your Microsoft Windows-based and Linux/Solaris -based operating systems.

TARGET AUDIENCE

This document is intended for the users who want to install Adeptia Suite.

OTHER RESOURCE MATERIALS

The following other resource materials are available.

Title	Description
<i>Getting Started Guide</i>	This is a reference document for those that are working with the Adeptia Suite for the first time. First time users should follow the material sequentially.
<i>Developer Guide</i>	This document covers an in-depth description of all the activities and services of Adeptia Suite that are available to a developer. It also acts as a guideline to use the various services of Adeptia Suite in a design environment.
<i>Business User Guide</i>	This document covers an in-depth description of all the features of Adeptia Suite that are available to a business user. It also acts as a guideline to use these features in a business environment.
<i>Modeler and Simulation Guide</i>	This document covers the description and usage of the Process Modeler and Simulation features of the Adeptia Suite. It also guides you to use these tools to analyze, optimize, and enhance any business process.
<i>Admin Guide</i>	This document provides an in-depth description of the Administrative features of the Adeptia Suite. It also guides you to manage the functioning, designing, and integration of various business processes using the administrative features of the Adeptia Suite.

ABOUT THIS GUIDE

This guide has the following sections:

Section	Description
<i>Preface</i>	Introduction of the document
<i>Pre-Installation Requirements</i>	Hardware, Operating System, Database requirements, and Software requirements for the Server and Clients
<i>Downloading Adeptia Suite Product</i>	Instructions for downloading the installation files
<i>Installing Adeptia Suite</i>	Installing in GUI or Console mode
<i>Updating License</i>	License Wizard
<i>Running Adeptia Suite</i>	As a service or from the Start Menu/Desktop
<i>Changing Memory Settings For JVM</i>	Changing property
<i>Disabling JRE Auto Update</i>	Disabling the automatic update of Java
<i>Troubleshooting</i>	Checking the error messages and troubleshooting

CONVENTIONS

The following tables list the various conventions used in this Adeptia documentation. We follow these conventions to help you quickly and easily identify particular elements, processes, and names that occur frequently in documents.



Typographical conventions

This guide uses the following typographical conventions:

Convention	Description
Bold text	Indicates one of the following: <ul style="list-style-type: none"> • Screen element • New terminology • File or folder name • Control in an application's user interface • Important information
<i>Italic text</i>	Indicates a reference or the title of a publication
Monospaced text	Indicates code examples or system messages
Monospaced bold text	Indicates system commands that you enter
<i>Hyperlink</i>	Indicates an Internet link to target material

Graphical conventions

This guide uses the following graphical conventions:

Convention	Description
	Indicates additional information that may be of interest to the reader
	Indicates cautions that, if ignored, can result in damage to software or hardware

CONTACTS/REPORTING PROBLEMS

These sections present contact information for different situations.

Sales

In case of any sales queries, please contact us at sales@adeptia.com.

Support

For support queries, please contact us at support@adeptia.com.

Latest updates and information

For the latest updates and information, please visit us at www.adeptia.com.

Adeptia Website

You can visit our website at:

www.adeptia.com

PRE-INSTALLATION REQUIREMENTS

This chapter covers the following topics:

- [Hardware and Operating System Requirements](#)
- [Database Requirements](#)
- [Software Requirements for Server](#)
- [Software Requirements for Clients](#)

HARDWARE AND OPERATING SYSTEM REQUIREMENTS

The minimum hardware requirements for installing Adeptia Suite are:

- Intel Core i5 or higher PC with Windows/Linux/Solaris operating system
- Minimum 4GB RAM. However, we recommend you to use 8GB RAM
- Minimum 2GB of Hard Disk space for installation
- Administrative rights on the machine for installing the Adeptia Suite
- You can install and run Adeptia Suite in virtual environment also



Adeptia Suite Version 6.2 SP1 is certified for the following operating systems:

- Windows 8
- Windows 7
- Windows 2008
- Linux (RedHat 10, Suse Linux 10, and Ubuntu Linux)

These are merely approximate figures. The actual RAM and hard disk space required for running Adeptia Suite depends on various factors such as the number of services running on the node, complexity of the services deployed on the node, and the CPU requirement for running these services. The expected data flow and system performance also determines the RAM and hard disk requirements.

DATABASE REQUIREMENTS

Database is required for logs. The database requirements for installing Adeptia Suite are:

- Embedded database as HSQLDB or other databases such as MySQL server, SQL Server or Oracle
- If a database other than HSQLDB is used for logs then the database user must have permissions to create, access and update the tables

SOFTWARE REQUIREMENTS FOR SERVER

For installing and running Adeptia Suite on Windows and Linux/Solaris, no additional software is required. The Java Runtime Environment (JRE) used by Adeptia Suite is already bundled with it.

SOFTWARE REQUIREMENTS FOR CLIENT

Following are the software requirements for accessing Adeptia Suite from the client machine:

- Java Runtime Environment (JRE) version 1.6 or 1.7
- Internet Explorer 10 or 11 (Java enabled) or Google Chrome Browser



Internet Explorer 11 and Google Chrome ver. 43 are the certified web browser for Adeptia Suite.

- Acrobat Reader to view PDF files generated by Process Modeler, Process Designer, and Data Mapper



If the client machine already has JRE version 1.7 installed on it, then you need to disable the JRE Auto update feature. To know how to disable JRE Auto Update, refer to [Disabling JRE Auto Update](#) section.

In case you are accessing Adeptia Server from a machine where Kernel and WebRunner are running, then you need to install the software required for the client machine.

You need to disable the Pop-Up Blocker of your web browser in order to open the applets. By default, the Pop-Up Blocker is enabled.

DOWNLOADING ADEPTIA SUITE PRODUCT

To download Adeptia Suite on your system, you need to download the zip file (***AdeptiaSuite<Version>_<OS>.zip***) from the Adeptia website. Here **<Version>** is the version of Adeptia Suite and **<OS>** is the operating system that you are using.

The zip file contains the following files:

- Executable file, based on your <OS>, **Install.exe** for Windows OS and **Install.bin** for Linux and Solaris
- JAR file, **License.jar**
- Accelerators ZIP files, based on the license that you have purchased. It can be the **Sampleobject.zip**, **Data Interface zip**, and **EDI.zip**.

INSTALLING ADEPTIA SUITE

You can install Adeptia Suite in either GUI mode or Console mode. If GUI is not configured, then the installation will automatically start in Console mode. You can also start installation in console mode manually.

This section describes how to install Adeptia Suite. If you are planning to setup more than one Adeptia Suite environment in a clustering mode, then refer to the *Deploying Clustering* section in the Adeptia Suite Administrator Guide before starting the installation.

PRE-REQUISITES

When installing Adeptia Suite on Windows ensure that you are logged in as “Administrator” or as any other user with administrative rights. When installing Adeptia Suite on Linux or Solaris, ensure that you are logged in as “root” or any other user with administrative rights.

INSTALLING ADEPTIA SUITE IN GUI MODE

Steps to install Adeptia Suite in GUI Mode

1. Unzip the **AdeptiaSuite<Version>_<OS>.zip** file and save its contents in a directory. Here **<Version>** is the version of Adeptia Suite and **<OS>** is the operating system (For example, Windows).
2. To install Adeptia Suite on Windows double-click the **install.exe** file.

To install the Adeptia Suite on Linux/Solaris execute the **install.bin** file using the following command:

```
./install.bin
```



Before executing the *install.bin* command, make sure that you have *Execute* permission on *install.bin* file.

If you are installing the build on Linux, make sure that you have read and write permission for the */tmp* folder.

The **Introduction** screen (see **Figure 1**) provides an introduction for installing Adeptia Suite.

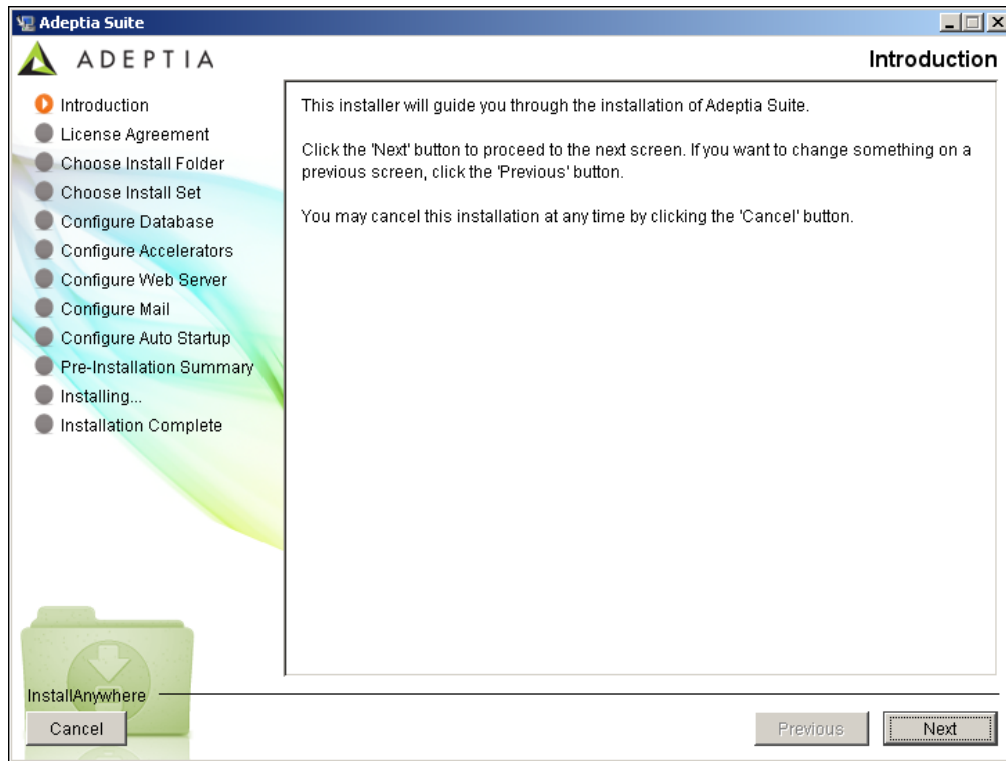


Figure 1: Introduction Screen

3. Click the **Next** button.

4. The **License Agreement** screen explains the terms of the license agreement (see **Figure 2**).

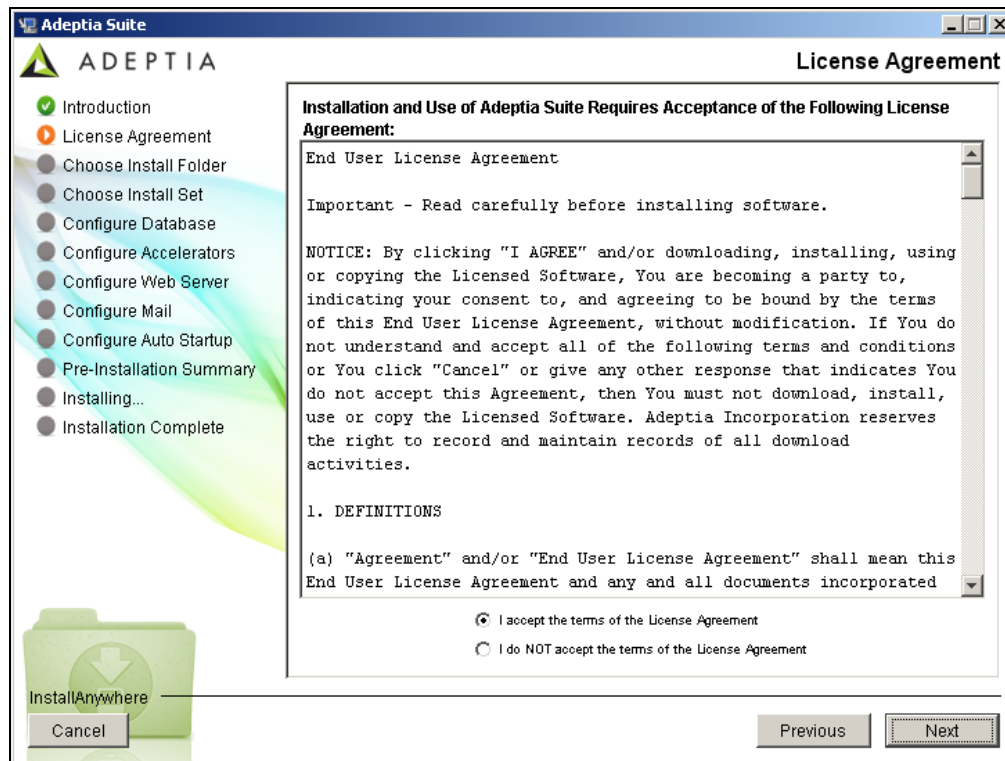


Figure 2: License Agreement

5. Select the radio button **I accept the terms of the License Agreement**. Click the **Next** button.
6. The **Choose Install Folder** screen offers you to select the destination folder where you want to install the Adeptia Suite (see **Figure 3**).

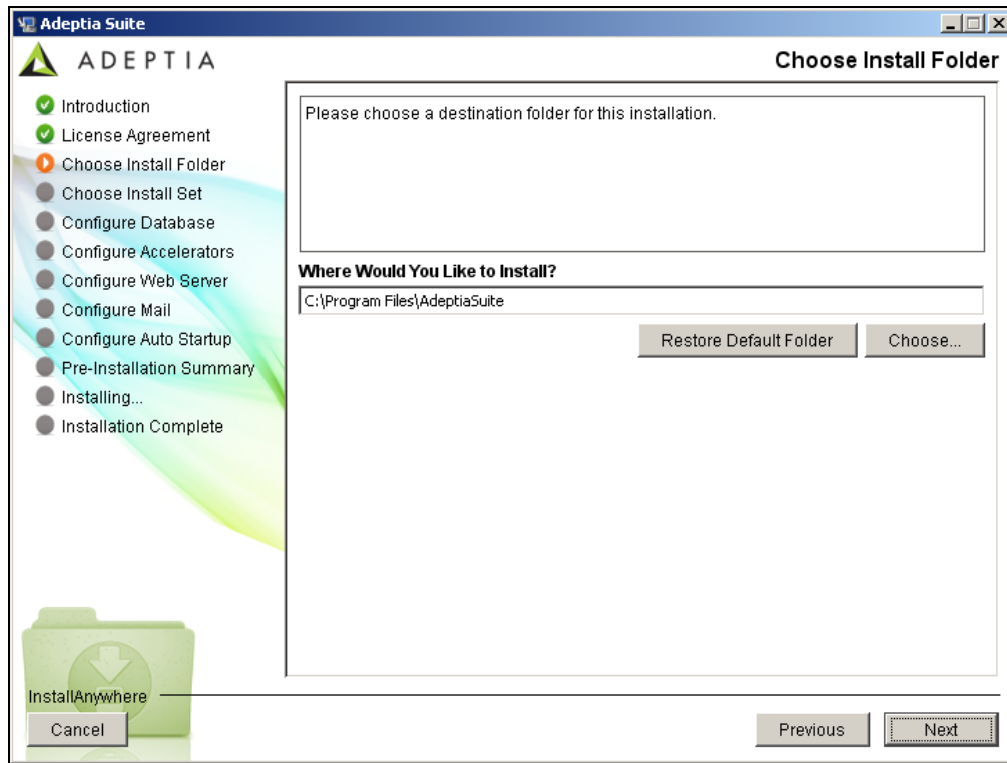


Figure 3: Choose Install Folder

7. Select the directory where you want to install the Adeptia Suite. The default installation directory for Windows-based operating system is **C:\Program Files\AdeptiaSuite**.
8. Click the **Choose** button to change the directory. Once you select your installation directory, click the **Next** button.

9. The **Choose Install Set** screen offers you two different types for installing the Adeptia Suite (see Figure 4).

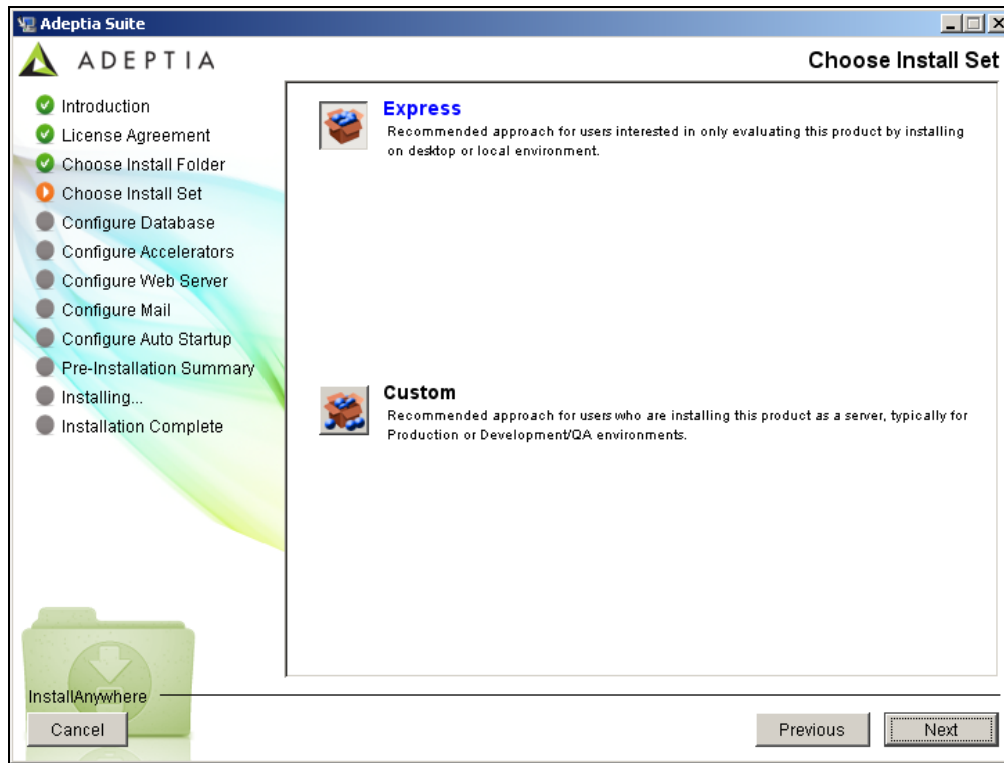


Figure 4: Choose Install Set



If you are installing the Adeptia Suite on a Linux-based or Solaris-based operating system then, the default path will be **`/usr/local/bin`**.

In case you have installed the Adeptia Suite earlier then, please select a different directory.

10. Select the type of installation.

If you select the *Express* installation type, and click the **Next** button, the setup will install the Adeptia Suite with all the default settings. However, if you select the *Custom* installation type, and click the **Next** button, the setup will then guide you through the rest of the installation process, and displays you the **Configure Log Database** screen (see Figure 5). This screen displays the options for configuring the log database.

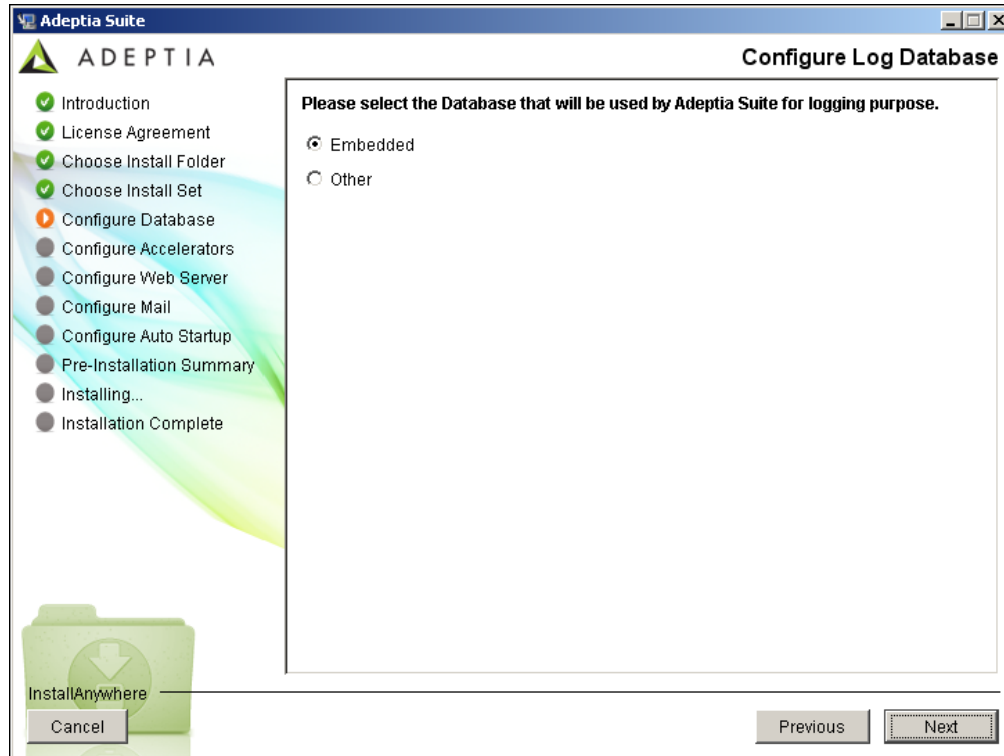


Figure 5: Configure Log Database

11. Select the database you want to use for logging. By default, the Adeptia Suite selects the **Embedded** radio button. This selection uses the HSQLDB database, which is pre-bundled with the Adeptia Suite.

If you want to use **Embedded** database then, skip steps 12 to 18 and go directly to step 19.

If you want to use any other database then, select the **Other** radio button and perform the steps from 12 to 18.

This selection activates the other fields.

12. Select the database that you want to set for logging from the **Select Database Type** drop-down list.



In addition to HSQLDB, Adeptia Suite supports SQL Server, MySQL, and Oracle databases.

13. Enter the name/IP address of the database server in the **Database Server Name** field.
14. Enter the port number of the database in the **Port** field.
15. Enter the name of the database in the **Database Name** field.



Using Named Instance of SQL Server as log database:

If you want to use a named instance of SQL Server for log database, enter the database name as per syntax given below:

<Database Name>;instance=<SQL instance name>

For example if your Database Name is "AdeptiaDB" and instance name is "development" then Database Name field will contain the following:

AdeptiaDB;instance=development

16. Enter the username and password for accessing the database, in the **User Id** and **Password** fields respectively.
17. Re-enter the password in the **Confirm Password** field.
18. If you want to create new tables in the defined Adeptia Suite Database then, select the **Create New Tables** radio button or if you want to use the existing tables of the database then, select the **Use Existing Tables** radio button (see Figure 6). Click the **Next** button.

Figure 6: Configure Log Database (Populated Fields)



Contact your System Administrator to know the database configuration information such as the Database Server Name, Database Name, User Name, and Password.



If you select the **Create New Tables** radio button, it will show a popup to confirm overwriting of existing tables. Click **Yes** to continue.

19. The **Configure Accelerators** screen (see Figure 7) displays a list of all accelerators that are a part of the Adeptia Suite.
20. Select the checkbox(es) of the accelerators that you want to configure. Selecting an accelerator will display its configuration parameters, if required.

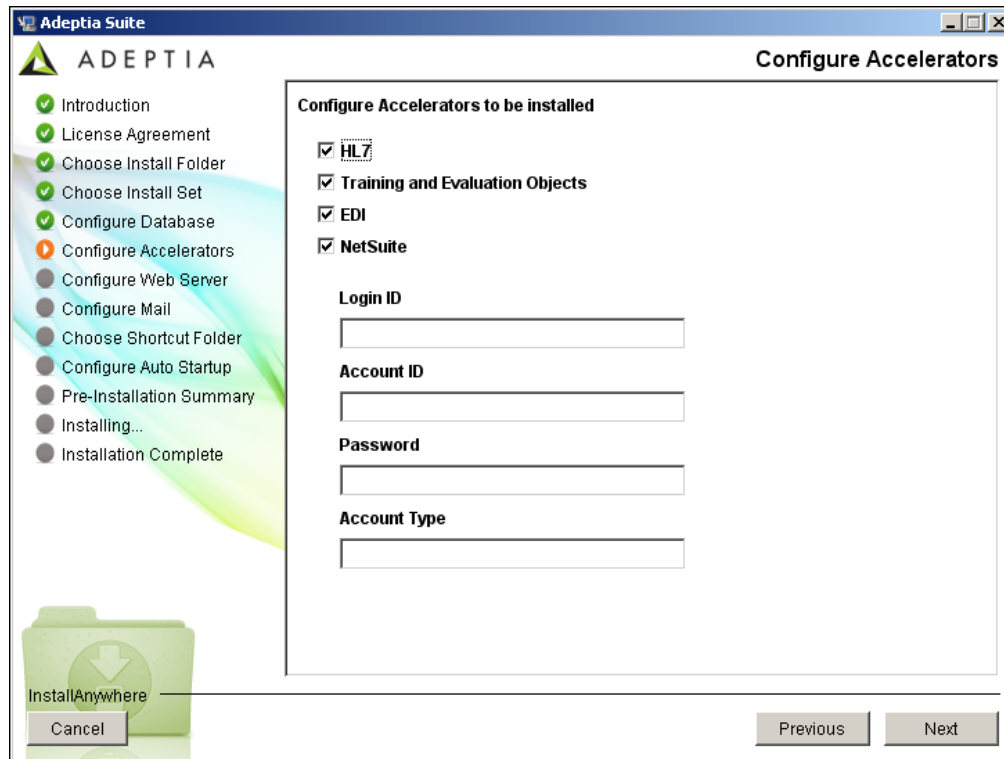


Figure 7: Configure Accelerators



- If no accelerators are bundled with your Adeptia Suite, then this screen will not appear.
- Some accelerators are, by default, mandatory to install, so you cannot de-select those accelerators.
- List of accelerators displayed here depends on the edition of the product you are using.

21. Enter the required information in these fields.
22. Click the **Next** button. The **Configure Kernel and Web Server** screen displays the options for configuring the Adeptia Suite's Kernel and Web Server.
23. Enter the port, which the Kernel will use. Make sure that no other application uses this port. By default, the Kernel uses port 21000.
24. Select the IP address, from the **HostName/IP Address** drop-down list that the Adeptia Suite will use. The **HostName/IP Address** drop-down list contains all the IP addresses that are defined on the server.

You can also manually type the hostname of the machine. We strongly recommend using a static IP address as some of the remote services may not work with hostname. In case your machine receives its IP address from a DHCP Server then, your IP address changes every time you reboot your machine. Hence, we recommend you to select the "localhost" option from the **HostName/IP Address** drop-down list.

25. Enter the HTTP port in the **HTTP Port No** field that the Adeptia Suite will use. Make sure that no other application uses this port. By default, the Adeptia Suite uses the 8080 HTTP port in the normal mode.
26. Enter the Secure HTTP port in the **HTTPS Port No** field that the machine will use to access the Adeptia Suite in a secure mode. Make sure that no other application uses this port. By default, the Adeptia Suite uses the **8443** HTTP port in the secured mode (see Figure 8).

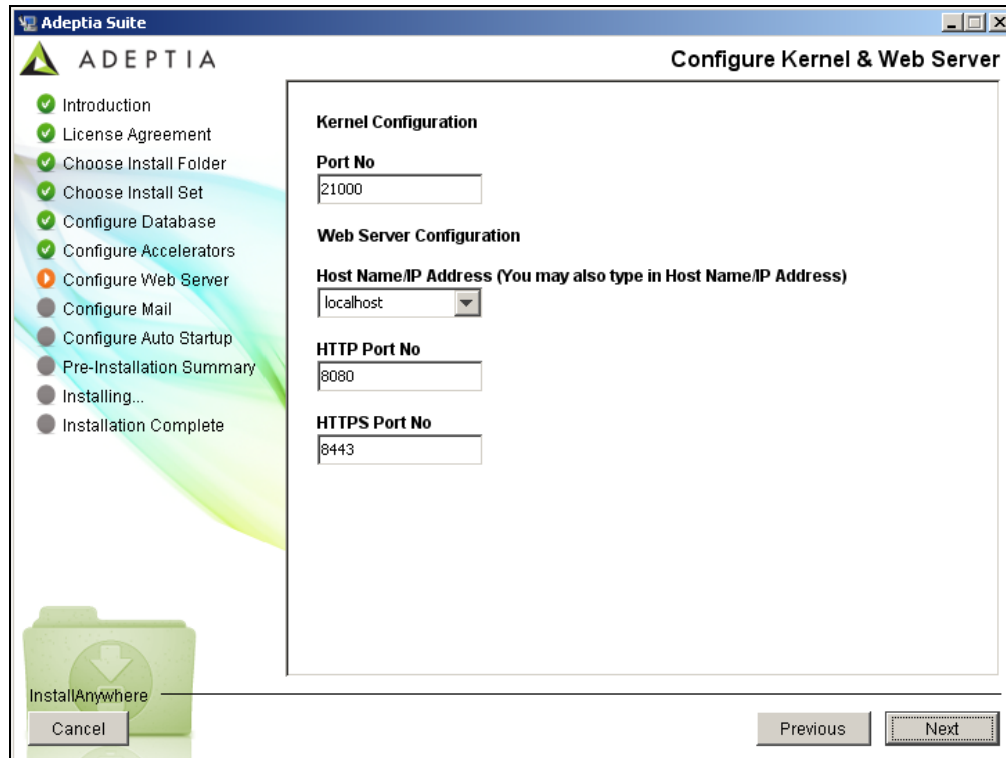


Figure 8: Configure Web Server

27. Click the **Next** button. The **Configure Mail** screen (see Figure 9) displays the options for configuring the email used for sending mail notifications.

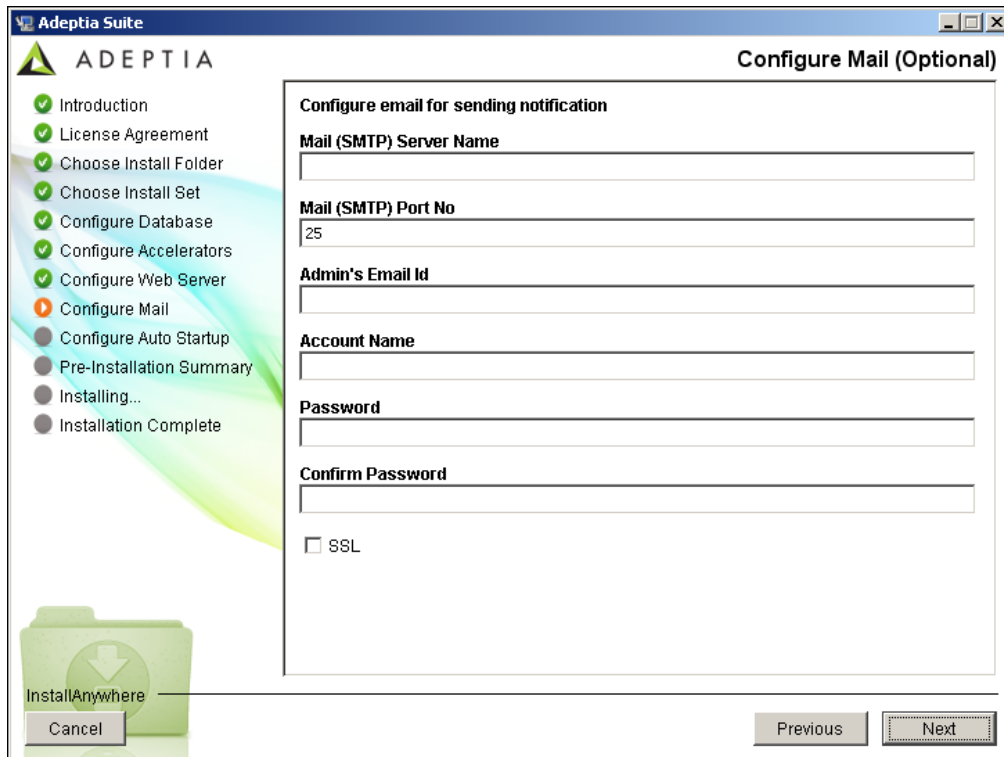


Figure 9: Configure Mail

28. Enter the name or IP address of the outgoing mail (SMTP) server in the **Mail (SMTP) Server Name** field.
29. Enter the port number of the outgoing mail (SMTP) server in the **Mail (SMTP) Port No** field.
30. Enter the email address of the Adeptia Suite Administrator or System Administrator in the **Admin's E-mail Id** field.
31. Enter the username and password, for accessing the defined email account, in the **Account Name** and **Password** fields respectively.
32. Re-enter the password in the **Confirm Password** field.



- The Adeptia Suite although requires the Email Configuration Parameters to send email notifications, but you can also skip them. To skip the email configuration, leave the fields blank and click the **Next** button. Then a confirmation dialog box will appear to confirm that you want to skip the email configuration. Click **Yes** to continue the installation.
- You can enter these parameters later. To know how to enter Email Parameters after the installation of the Adeptia Suite, refer to the Adeptia Suite Admin Guide.

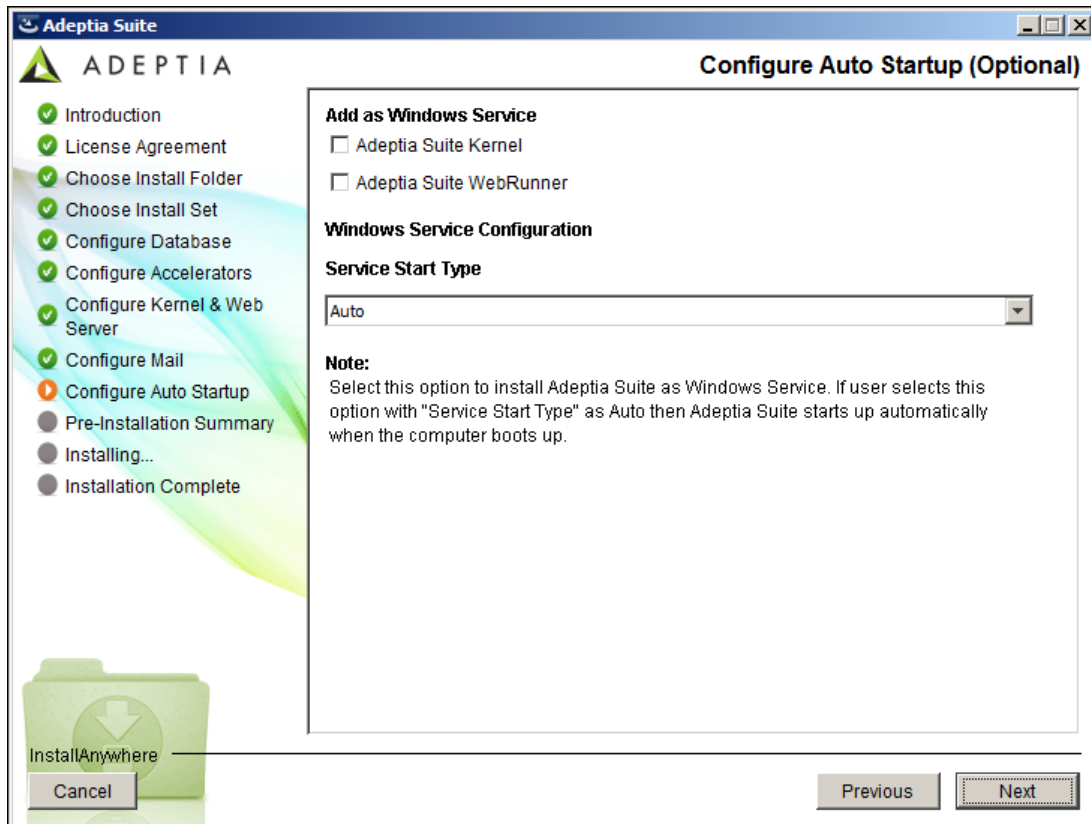


Figure 10: Configure Auto Startup



This screen appears only when you are installing the Adeptia Suite on a Windows-based machine.

33. The **Configure Auto Startup** screen (see Figure 10) provides you the options for configuring the Kernel and the WebRunner as Windows services. Select the *Adeptia Suite Kernel* and the *Adeptia Suite WebRunner* checkboxes, displayed under the *Add as Windows Service* option.
34. Select the start type for Windows service from the **Service Start** drop-down list.
If you select the **Auto** option then, the system will start these services automatically each time you start your Windows-based machine.
If you select the **Manual** option then, you will need to start these services manually.
35. Click the **Next** button.
36. The **Pre-installation Summary** screen (see Figure 11) displays a brief summary for all settings selected while installing the Adeptia Suite.

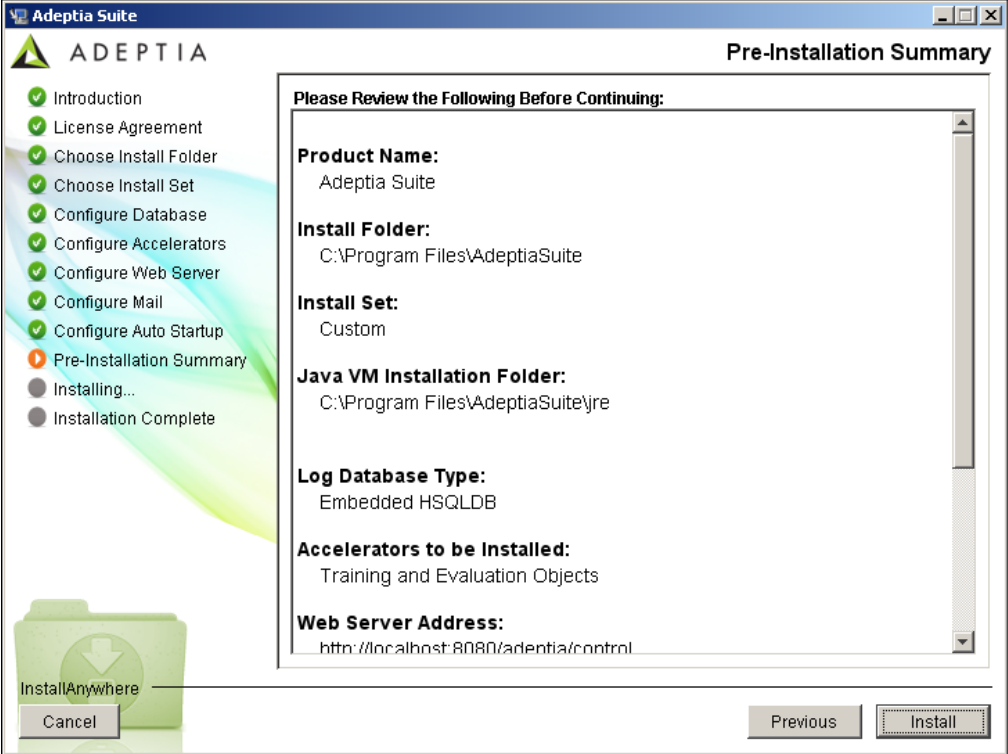


Figure 11: Pre-Installation Summary

37. To begin the installation, click the **Install** button. This action displays the **Installing** screen (see Figure 12).

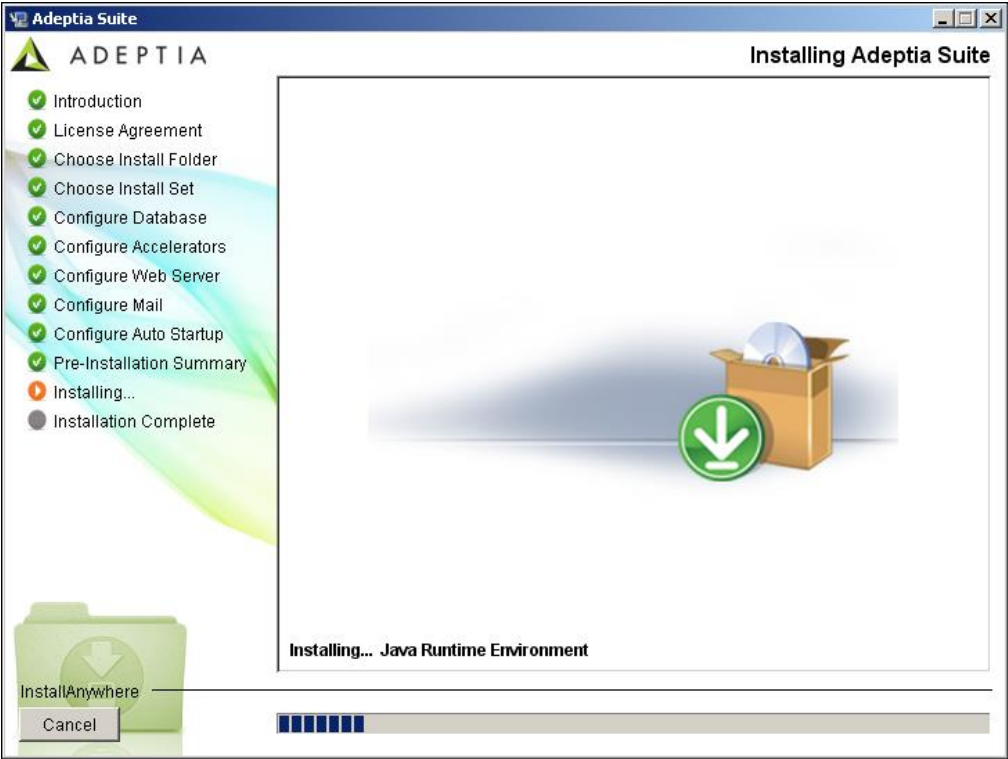


Figure 12: Installing Adeptia Suite

38. Once the installing process is complete, you will be able to view the **Installation Complete** screen (see Figure 13).

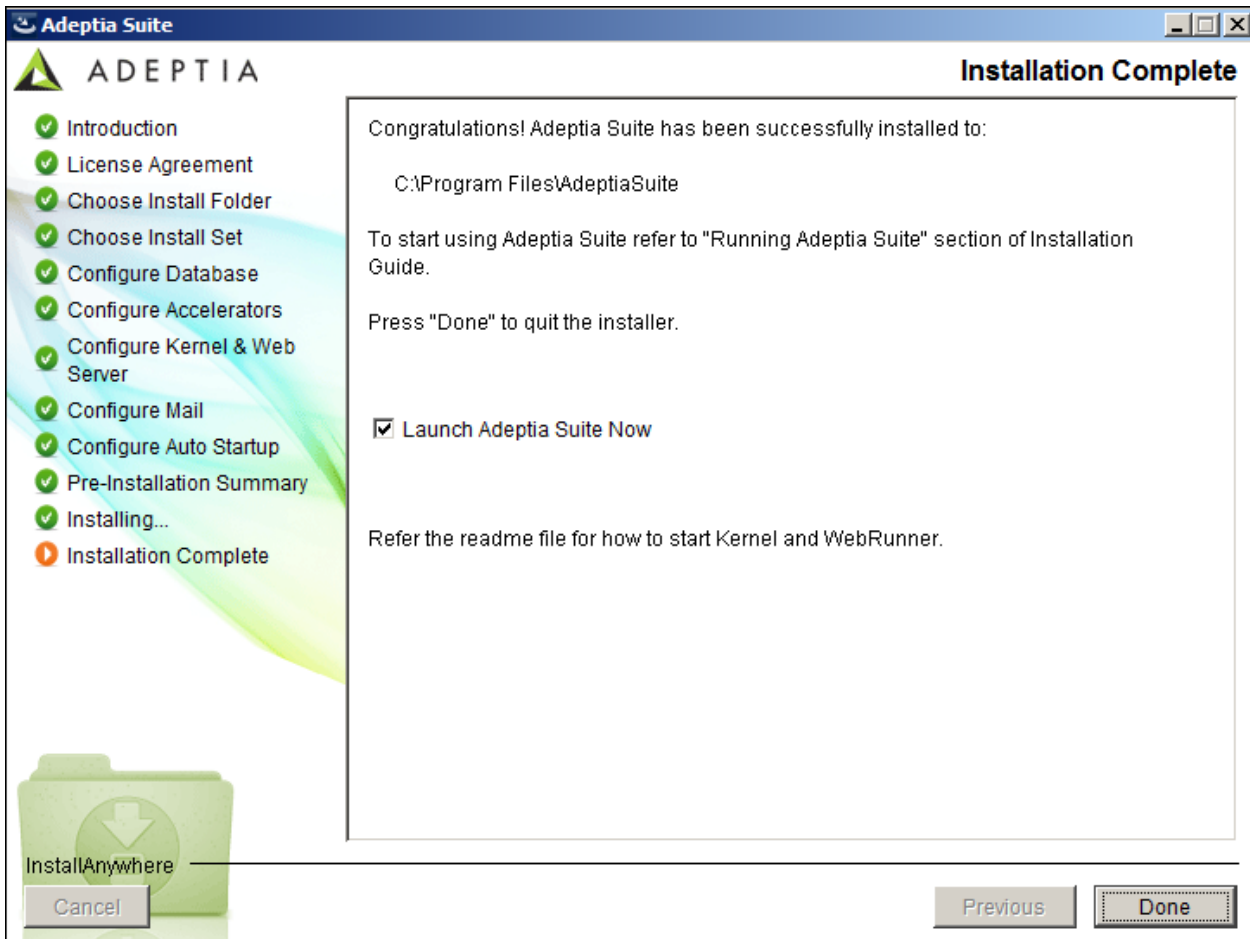


Figure 13: Installation Complete

39. If you want to start Adeptia Suite immediately after installation, then make sure that *Launch Adeptia Suite now* checkbox is enabled. This automatically starts Adeptia Suite Kernel and Webrunner, and opens the login screen in web browser.
40. Click **Done** button to exit the installation wizard.



Once you have successfully installed the Adeptia Suite onto your machine then, the Adeptia Suite creates a log file (*AdeptiaSuite_InstallLog.log*) in the folder where you have installed it. However if installation somehow fails, then the log file is created in the folder from where the **install.exe** or **install.bin** file was executed.

INSTALLING ADEPTIA SUITE IN CONSOLE MODE

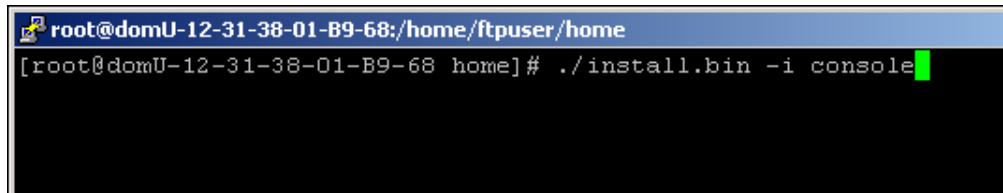
The process of installing Adeptia Suite in the Console mode is similar to that of installing it in the GUI mode, with minor differences. This section only explains the initial startup.

Steps to install Adeptia Suite in Console mode

1. Unzip the **AdeptiaSuite<Version>_<OS>.zip** file and save its contents in a directory. Here **<Version>** is the version of Adeptia Suite and **<OS>** is the operating system.

- To install Adeptia Suite in Console mode in Windows, type the command, `<install.exe -i console>` from the directory where you have extracted the ZIP file.

To install Adeptia Suite on Linux or Solaris, type the command, `<./install.bin -i console>` (see Figure 14).



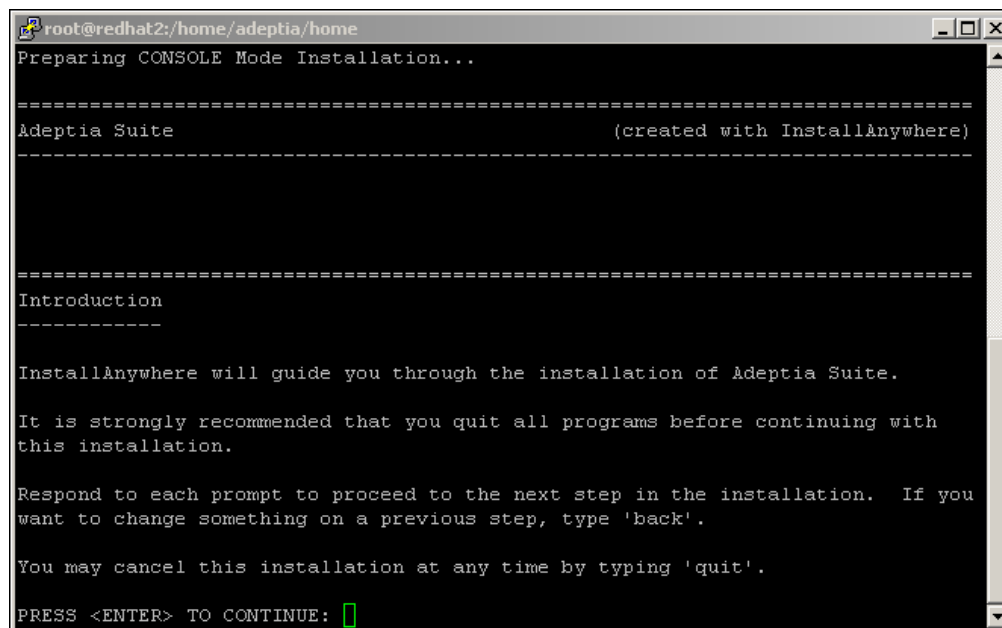
```

root@domU-12-31-38-01-B9-68:/home/ftpuser/home
[root@domU-12-31-38-01-B9-68 home]# ./install.bin -i console

```

Figure 14: Starting Adeptia Suite Installation in Console Mode

- This starts the Installation process and displays the **Introduction** screen (see Figure 15).



```

root@redhat2:/home/adeptia/home
Preparing CONSOLE Mode Installation...

=====
Adeptia Suite                               (created with InstallAnywhere)
=====

Introduction
-----

InstallAnywhere will guide you through the installation of Adeptia Suite.

It is strongly recommended that you quit all programs before continuing with
this installation.

Respond to each prompt to proceed to the next step in the installation.  If you
want to change something on a previous step, type 'back'.

You may cancel this installation at any time by typing 'quit'.

PRESS <ENTER> TO CONTINUE:

```

Figure 15: Introduction

- Press **<ENTER>** to view the **License Agreement** screen (see Figure 16).

```

root@redhat2:/home/adeptia/home
to be deployed in production environment with an "evaluation license".

PRESS <ENTER> TO CONTINUE:

12. If this product is used with an "Express Edition annual renewable license",
it is allowed to be used in a production environment for commercial use
provided the usage constraints as mandated by the Express license are observed.
Further, only one instance may be deployed in production per company.

13. You must not make copies of this product or allow distribution to any
third-party. It may only be downloaded from the Adeptia website after proper
registration.

14. You must not make copies of the license file of this product or allow
distribution to any third-party. Evaluation or production license may only be
requested directly from Adeptia.

DO YOU ACCEPT THE TERMS OF THIS LICENSE AGREEMENT? (Y/N): █

```

Figure 16: License Agreement

5. Type 'Y' and press <Enter> to view the **Choose Install Folder** screen (see Figure 17).

```

root@redhat2:/home/adeptia/home
distribution to any third-party. Evaluation or production license may only be
requested directly from Adeptia.

DO YOU ACCEPT THE TERMS OF THIS LICENSE AGREEMENT? (Y/N): y

=====
Choose Install Folder
=====

Please choose a destination folder for this installation.

Where would you like to install?

  Default Install Folder: /usr/local/bin/AdeptiaSuite

ENTER AN ABSOLUTE PATH, OR PRESS <ENTER> TO ACCEPT THE DEFAULT
: █

```

Figure 17: Choose Install Folder

6. Type the absolute path of the directory where you want to install the Adeptia Suite, or press <Enter> to accept the default path. This action displays the **Choose Install Set** screen (see Figure 18).

```

root@redhat2:/home/adeptia/home
-----
Please choose a destination folder for this installation.

Where would you like to install?

  Default Install Folder: /usr/local/bin/AdeptiaSuite

ENTER AN ABSOLUTE PATH, OR PRESS <ENTER> TO ACCEPT THE DEFAULT
:

-----
Choose Install Set
-----
Please choose the Install Set to be installed by this installer.

->1- Express
    2- Custom

ENTER THE NUMBER FOR THE INSTALL SET, OR PRESS <ENTER> TO ACCEPT THE DEFAULT
: █

```

Figure 18: Choose Install Set

7. Type the number (1 or 2) to select the install set or press **<Enter>** to accept the default set (denoted by -> key). Follow the installation wizard.



To go to previous menu, type back and press <Enter>.

5

UPDATING LICENSE

This section explains how to update a new license in case your license is expired and you get a new license. This section applies only if you have already installed the Adeptia Suite and you want to update your Adeptia Suite's license.

If you are installing the Adeptia Suite for the first time, skip this section, as a valid trail license is already bundled with the installer.

PRE-REQUISITES

- Ensure that the Kernel and the WebRunner are not running.

UPDATING LICENCE ON WINDOWS

Steps to update the license

1. Click **Start > Programs > Adeptia Suite** and then select **Update License** to view the **License Wizard** (see Figure 19).

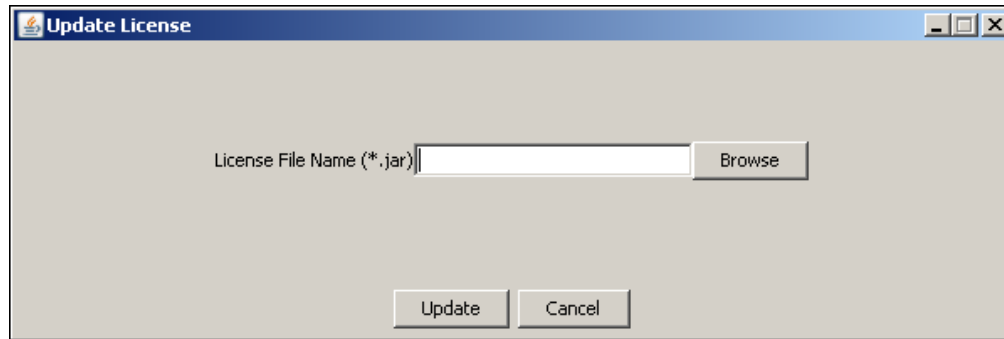


Figure 19: Select License File

2. Click **Browse** and select the **License.jar** file. The path of the selected file is shown in the **License File Name (*.jar)** field (see Figure 20).

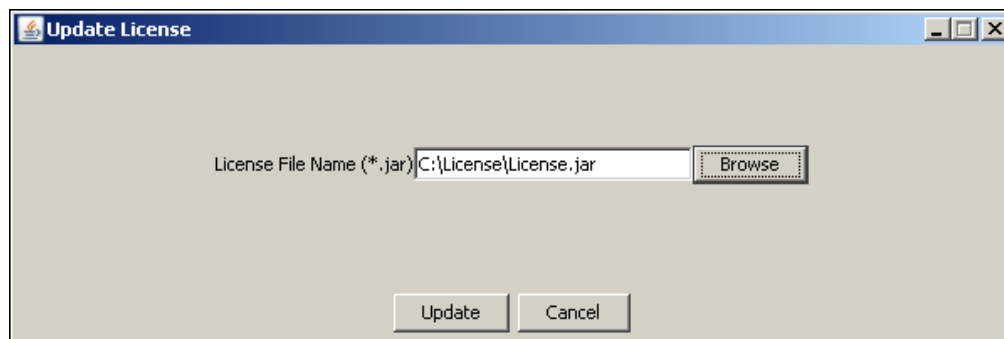


Figure 20: License File Path

3. Click **Update** that will show you a warning message (see Figure 21).

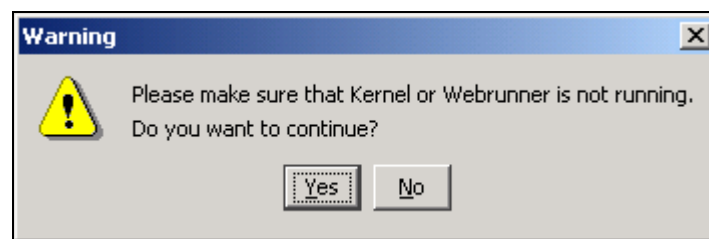


Figure 21: Warning Message

4. Make sure that the Kernel and the WebRunner are not running and click **Yes**. An information dialog box will appear that will confirm the successful updating of the license of your Adeptia Suite (see Figure 22).

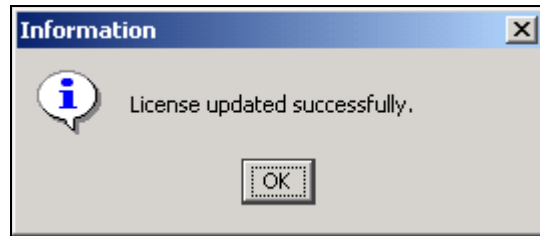


Figure 22: Confirmation Message

5. Click **OK** to close the dialog box.

UPDATING LICENSE ON LINUX/SOLARIS

To update the license on Linux or Solaris, you just need to copy the **License.jar** file in the **<InstallFolder>ServerKernel\etc** folder.

RUNNING ADEPTIA SUITE

This section guides you on how to start and access your Adeptia Suite. In order to access it, you need to first start the Kernel and the WebRunner and then login into your Adeptia Suite.

STARTING KERNEL AND WEBRUNNER ON WINDOWS

Before accessing the Adeptia Suite, you must start the Kernel and WebRunner.

You can start the Kernel and the WebRunner on Windows in two ways:

- [As a Service](#)
- [From Start Menu/Desktop](#)

Starting Kernel and WebRunner as a Service

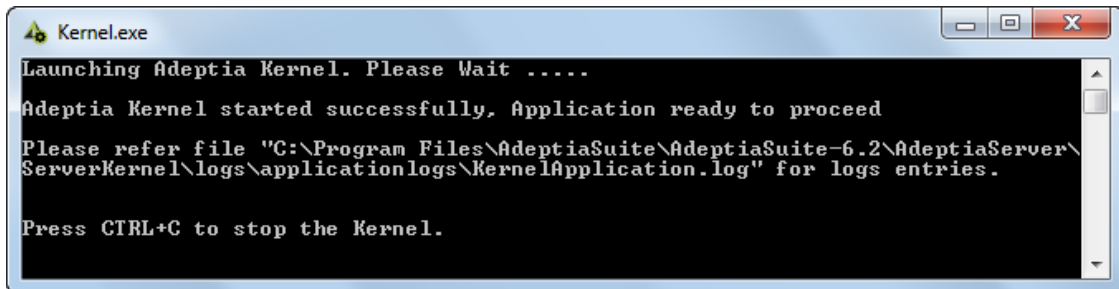
If you have installed the Adeptia Suite as a service, you can start the Kernel and the WebRunner as a service in two ways:

- **Auto:** This implies that the Adeptia Suite Kernel and WebRunner services will start automatically, once your Windows-based operating systems.
- **Manual:** This implies that you have to manually start the Adeptia Suite Kernel and WebRunner services from the Control Panel > Administrative Tools > Services, once you login into your Windows-based operating system.

When you install the Adeptia Suite as a Service, there is a field for selecting the *Service Start Type*, while configuring the Windows Service (refer to Figure 10). You can select it as *Auto* or *Manual*. By default, the setup selects the *Auto* option.

Starting Kernel and WebRunner from Start Menu/Desktop

1. Click **Start > Programs > Adeptia Suite** and then select the **Adeptia Suite Kernel**. Alternately, double-click the **Adeptia Suite Kernel** shortcut on the Desktop. This action will display the console window with the kernel message (see Figure 23).



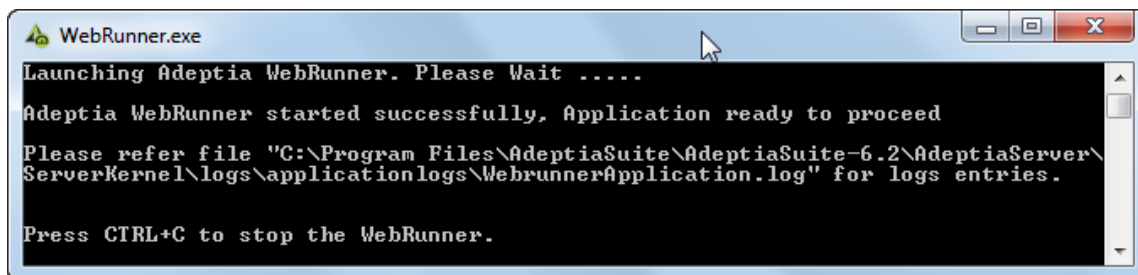
```

Kernel.exe
Launching Adeptia Kernel. Please Wait .....
Adeptia Kernel started successfully, Application ready to proceed
Please refer file "C:\Program Files\AdeptiaSuite\AdeptiaSuite-6.2\AdeptiaServer\
ServerKernel\logs\applicationlogs\KernelApplication.log" for logs entries.
Press CTRL+C to stop the Kernel.

```

Figure 23: Starting Adeptia Suite Kernel

2. Click **Start > Programs > Adeptia Suite** then select the **Adeptia Suite WebRunner** menu item to start the Adeptia Suite WebRunner. Alternately, double-click the **Adeptia Suite WebRunner** shortcut on the Desktop. This action will display you a new console window with the Web Runner message (see Figure 24).



```

WebRunner.exe
Launching Adeptia WebRunner. Please Wait .....
Adeptia WebRunner started successfully, Application ready to proceed
Please refer file "C:\Program Files\AdeptiaSuite\AdeptiaSuite-6.2\AdeptiaServer\
ServerKernel\logs\applicationlogs\WebrunnerApplication.log" for logs entries.
Press CTRL+C to stop the WebRunner.

```

Figure 24: Starting Adeptia Suite WebRunner



To stop the Kernel and WebRunner, press **<Control>+ <C>**

< Control > + <C> stops the kernel instantly terminating all transactions. If you close Kernel and WebRunner DOS windows by clicking on the cross (close) button, Java Virtual Machine (JVM) used by Adeptia Suite may not shut down properly.

At anytime, if you encounter the following error in the Kernel or WebRunner screens:

```
java.lang.OutOfMemoryError: PermGen space
```

You need to change the memory settings for JVM. For details, refer to the *Changing Memory Settings for JVM* section.

In case the Kernel or the WebRunner console closes automatically, then refer to the *Troubleshooting* section.

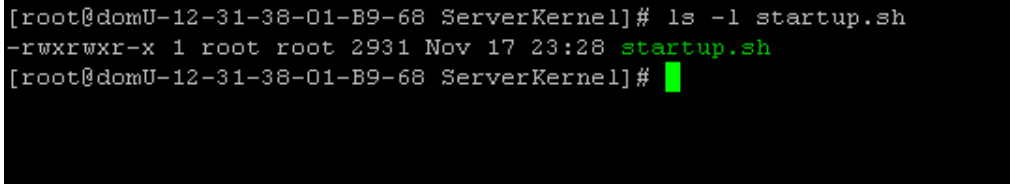
STARTING ADEPTIA SUITE KERNEL AND WEBRUNNER ON LINUX AND SOLARIS

This section explains how to start the Adeptia Suite Kernel and WebRunner on Linux and Solaris.

Steps to start Adeptia Suite Kernel and WebRunner on Linux and Solaris

1. Login in the machine/server using the same ID that was used during installation.
2. Change the directory where the Adeptia Suite is installed using the following command:
`cd /usr/local/bin/AdeptiaSuite/AdeptiaSuite-x.x/AdeptiaServer/ServerKernel/`
3. Ensure that the **startup.sh** file has **Execute** permission using the following command:

```
ls -l startup.sh
```



```
[root@domU-12-31-38-01-B9-68 ServerKernel]# ls -l startup.sh
-rwxrwxr-x 1 root root 2931 Nov 17 23:28 startup.sh
[root@domU-12-31-38-01-B9-68 ServerKernel]#
```

Figure 25: Check the file permission

4. Execute the **startup.sh** file using the following command:

```
./startup.sh
```



This command starts both the Kernel and the WebRunner.

5. To ensure that the Adeptia Suite Kernel and WebRunner are started successfully, type the following commands in the **ServerKernel** folder:

```
cat kernel.out
```

and

```
cat webrunner.out
```

These commands show **kernel.out** and **webrunner.out** files respectively. Make sure that these files contain the message that “Kernel has started successfully” and “WebRunner has started successfully”.



When you execute the **./startup.sh** file to start the Kernel and the WebRunner, the Adeptia Suite generates a **config.log** file in the **/usr/local/bin/AdeptiaSuite/AdeptiaSuite-x.x/AdeptiaServer/ServerKernel/** folder. This file contains information that is important for troubleshooting. If you need to contact Tech Support, email this file.



- You can start the Kernel and the WebRunner in any of the ways discussed above, but the Adeptia Suite always writes the output of the Kernel and the WebRunner into **KernelApplication.log** and **WebrunnerApplication.log** files respectively. These files are located in **<AdeptiaServerInstallFolder>/AdeptiaServer/ServerKernel/logs/applicationlogs**

folder of Adeptia Suite. To change the location of these files, you need to set the values of **abpm.kernelout.file.location** and **abpm.webrunnerout.file.location** properties for the Kernel and the WebRunner respectively. To know how to change the value of these properties, refer to the Administrator Guide for details.

- The default maximum size of any of these files is 20 MB. When any file reaches this size, the Adeptia Suite renames the existing file with the current date and adds a time stamp to the original file name. Now, the Adeptia Suite creates a new file with the same name as that of the original file and now the Adeptia Suite writes the output of the Kernel (or the WebRunner) into this new file.
- To change the size of above said files, you need to set the values of **abpm.kernelout.file.maxSize** and **abpm.webrunnerout.file.maxSize** properties respectively. To know how to change these properties refer to the *Updating System Properties* section of the Administrator Guide for details.

LOGIN INTO ADEPTIA SUITE

Pre-requisites

You must start the Kernel and the WebRunner before log-in into the Adeptia Suite. To know how to start the Kernel and the WebRunner refer to the previous section.

If you are login into the Adeptia Suite for the first time, you need to clear the history of your browser. To know how to clear your browser history, refer the documentation of your browser.

Steps to login into the Adeptia Suite

1. Click **Start > Programs > Internet Explorer** to launch the Internet Explorer web browser.
2. Type <http://hostname:8080/adeptia/control/> in the URL bar.



- “hostname” in the address is the name of the Server on which Adeptia Suite is running. For example if the Adeptia Suite is running on a Server named Adeptia, the URL will be <http://adeptia:8080/adeptia/control/>
- If Adeptia Suite is running on local machine, the URL will be <http://localhost:8080/adeptia/control/>
- The Adeptia Suite is tested only on Internet Explorer and Chrome.

3. Press **Enter**. This displays the **Adeptia Suite Login** screen (see Figure 26).

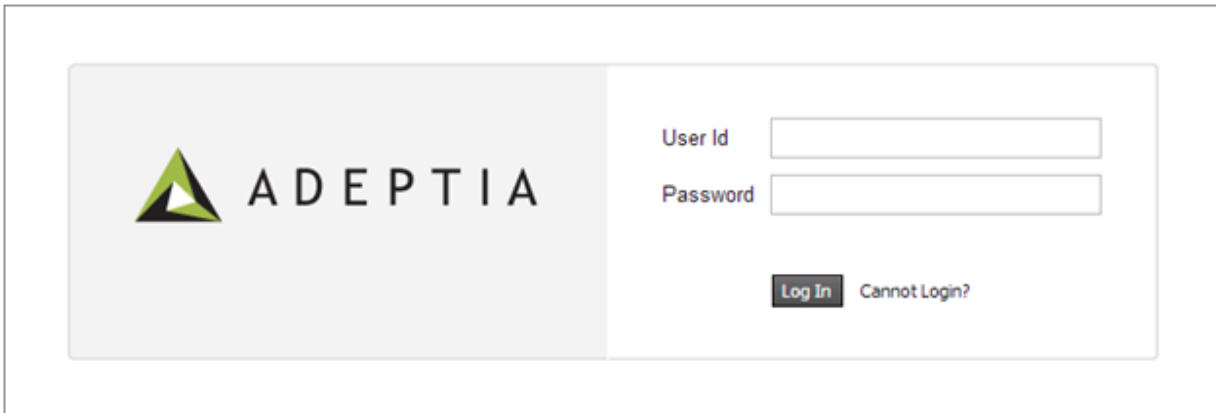


Figure 26: Adeptia Suite Login Screen

4. Enter User ID and Password in the respective fields.

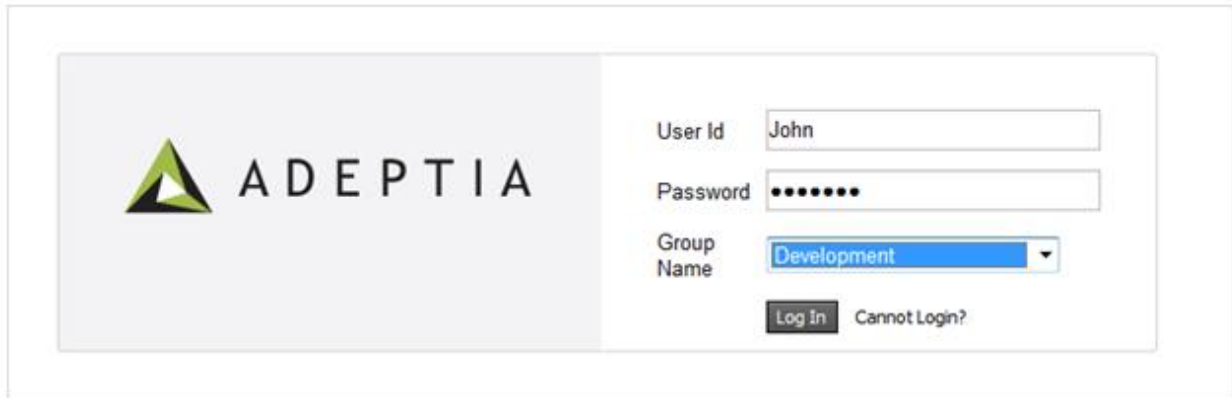


- Default User ID is **admin** and the password is **indigo1**.
- The password should be of 6 characters minimum and should include a numeric value.
- The password will expire after the number of days specified in the *Value* field, while setting the *Expiry Days* property. For example. If this value is set to 30, then the password will expire after 30 days. If this value is set to 0, then the password will not expire. Additionally, you can set the Adeptia Suite to display a password expiry warning at the time of login. For example, if 5 is specified in the *Value* field, while setting the *Expiry Message Flash* property, then a warning will be displayed 5 days prior the password expiry. The Adeptia Suite will display you the warning each time you login.
- If the password is already expired, then the Adeptia Suite will automatically take you to the Change Password screen once you login into the Adeptia Suite.
- It is mandatory to save all the activities before changing your password. Else, your changes will not reflect in the activities.

5. Click the **Submit** button. Based on the user's workgroup you will see the appropriate screen. If the user is a member of more than one group, then the Adeptia Suite will again display the **Login** screen, with the *Group* field (see Figure 27). Otherwise, it will show you the **Adeptia Suite Home Page** with details associated with the logged in user's group.



The Adeptia Suite populates the **Group** drop-down list with only those groups of which the logged in user is a member.



The screenshot shows the Adeptia Suite login interface. On the left is the Adeptia logo. On the right, there are three input fields: 'User Id' with the value 'John', 'Password' with masked characters, and 'Group Name' with a dropdown menu showing 'Development'. Below these fields are two buttons: 'Log In' and 'Cannot Login?'.

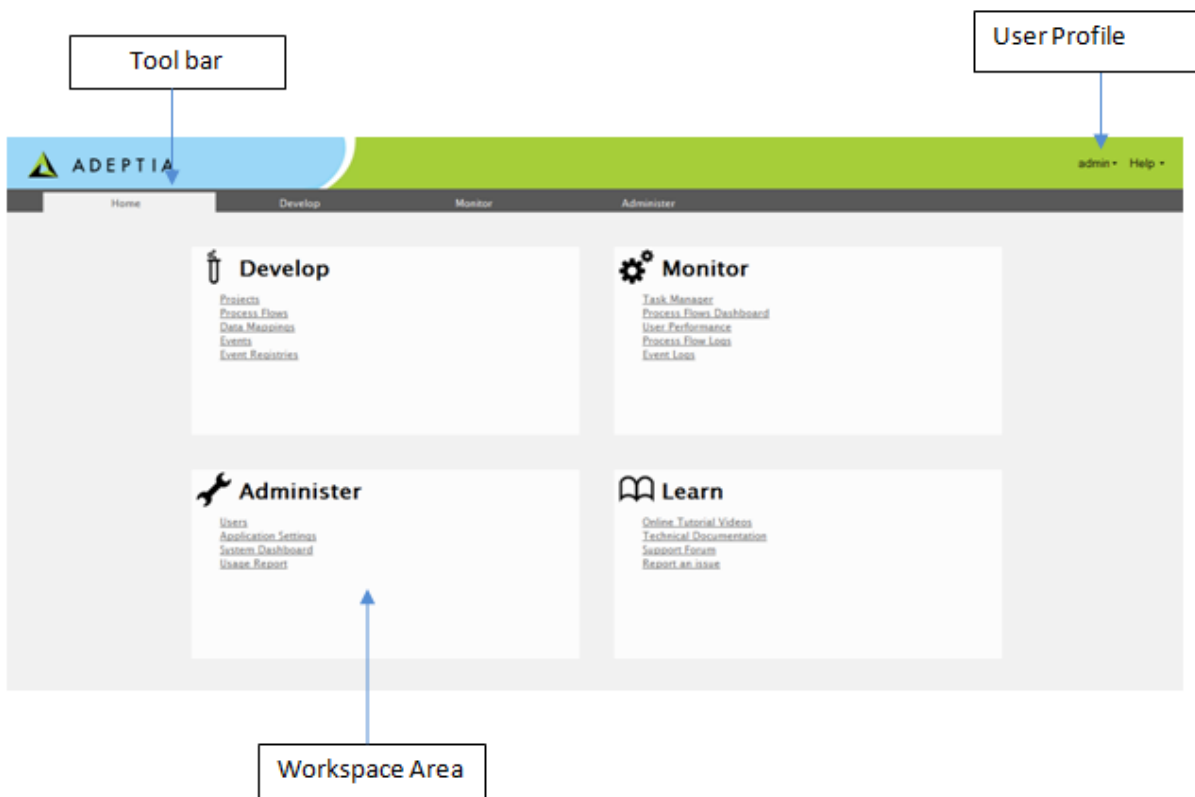
Figure 27: Adeptia Suite Select Group Screen

6. Select the group with which the user wants to login, from the *Group* drop-down list.



You can be a member of more than one group, but you can login and access the objects associated with one group at a time. For example, if you are a member of two groups: *Administrators* and *Executives*. Both these groups vary in terms of objects. You can login into the Adeptia Suite as a member of either the *Administrators* or the *Executives* group at a time.

7. Click **Submit**. This action will show you the **Adeptia Suite Home Page** with details associated with the selected user group (see Figure 28).



The screenshot shows the Adeptia Suite Home Page. At the top left is the Adeptia logo. A 'Tool bar' label points to the top navigation area. At the top right is a 'User Profile' label pointing to 'admin - Help'. Below the navigation bar are four main sections: 'Develop', 'Monitor', 'Administer', and 'Learn'. A 'Workspace Area' label points to the main content area. The 'Develop' section includes links for Projects, Process Flows, Data Mappings, Events, and Event Registries. The 'Monitor' section includes Task Manager, Process Flow Dashboard, User Performance, Process Flow Logs, and Event Logs. The 'Administer' section includes Users, Application Settings, System Dashboard, and Usage Report. The 'Learn' section includes Online Tutorial Videos, Technical Documentation, Support Forum, and Report an Issue.

Figure 28: Adeptia Suite Homepage



- By default, you login in the *Standard* mode. But if you wish to login in a **Secure** mode then, use the following URL to login into the Adeptia Suite:
<https://hostname:8443/adeptia/control/>
- Click **Yes** to close the Security Alert dialog box.
- When you login into the **Secure** mode, the data transfer from your PC to the Server happens in an encrypted form and through a secure channel.
- To learn how to use the Adeptia Suite, refer to the Adeptia Suite User Guide.

STOPPING KERNEL AND WEBRUNNER ON LINUX AND SOLARIS

This section explains how to stop the Kernel and WebRunner on Linux and Solaris.

Steps to stop the Kernel and WebRunner on Linux and Solaris

1. Ensure the **stop.sh** file has *Execute* permission.
2. Execute **stop.sh** file from the */usr/local/bin/AdeptiaSuite/AdeptiaSuite-x.x/ServerKernel/* folder using the command:

```
./stop.sh
```

UNINSTALLING ADEPTIA SUITE FROM WINDOWS

PRE-REQUISITES

- Make sure that you stop the Kernel and the WebRunner.
- Create a backup of any important folder in the Adeptia Suite installation directory, which you want to keep for future use.

Steps to uninstall Adeptia Suite for Windows

1. Stop Adeptia Suite Kernel and WebRunner.
2. Click **Start > Programs > AdeptiaSuite** and then select **Uninstall Adeptia Suite**. This action will display the **Adeptia Suite Uninstallation** screen (see Figure 29).

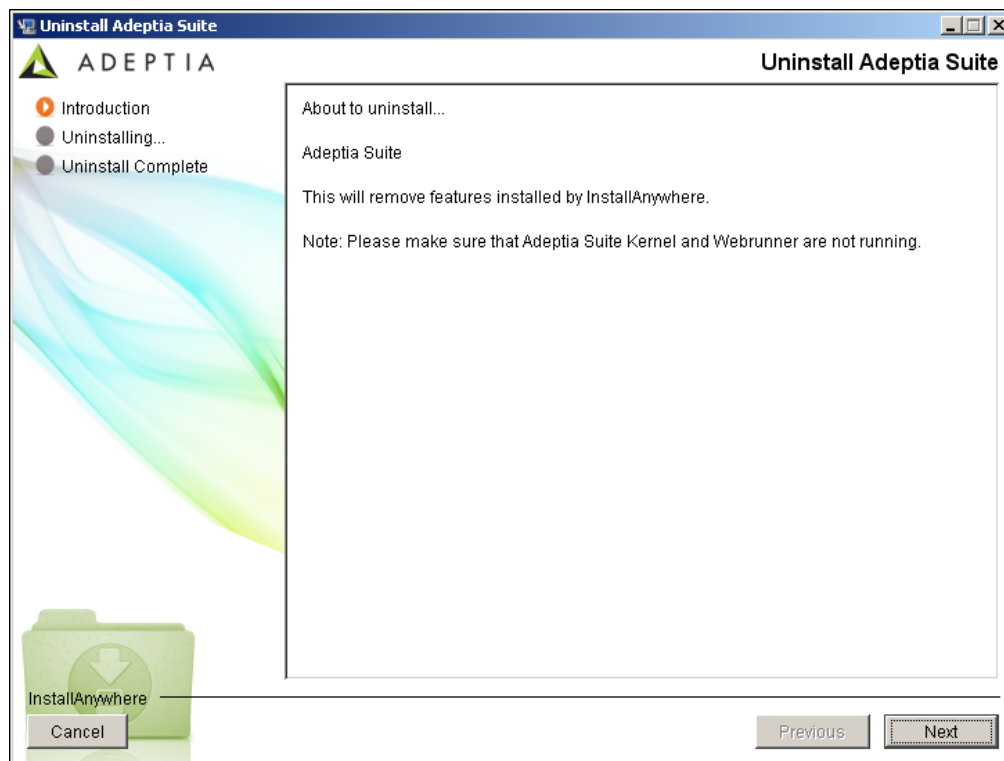


Figure 29: Confirm Adeptia Suite Uninstallation

3. Click the **Yes** button, if you want to uninstall the Adeptia Suite. This starts the Uninstallation process and displays the **Uninstalling Adeptia Suite** screen (see Figure 30).

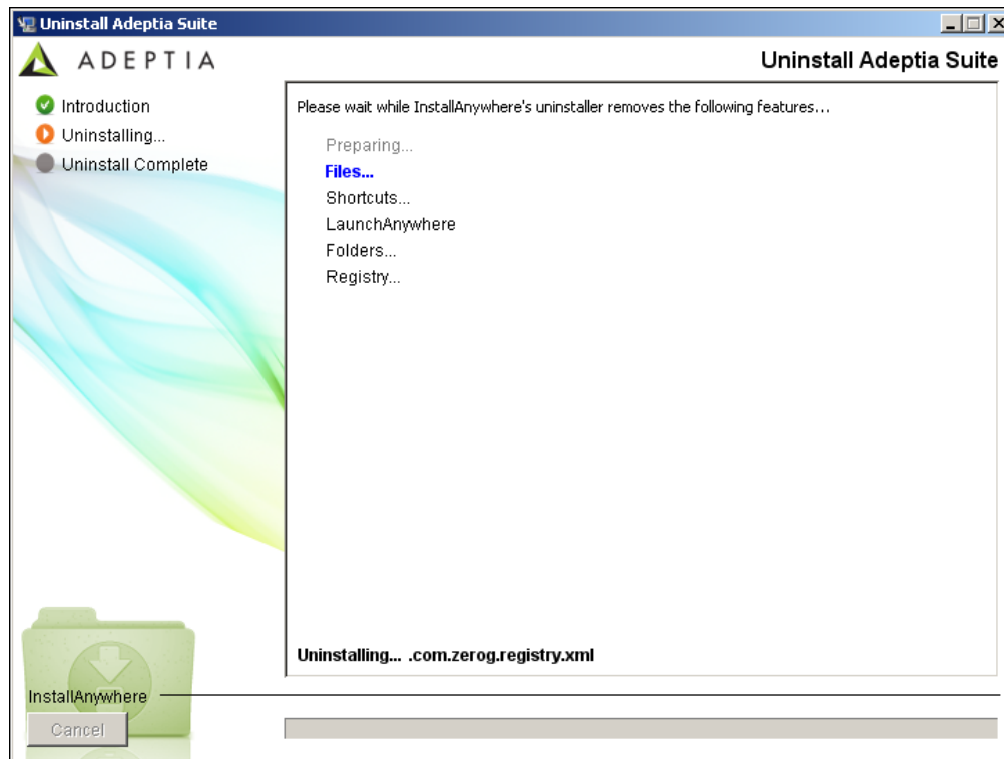


Figure 30: Uninstalling Adeptia Suite

4. Once the uninstallation process is complete, you will be able to view the **Uninstallation Complete** screen (see Figure 31).

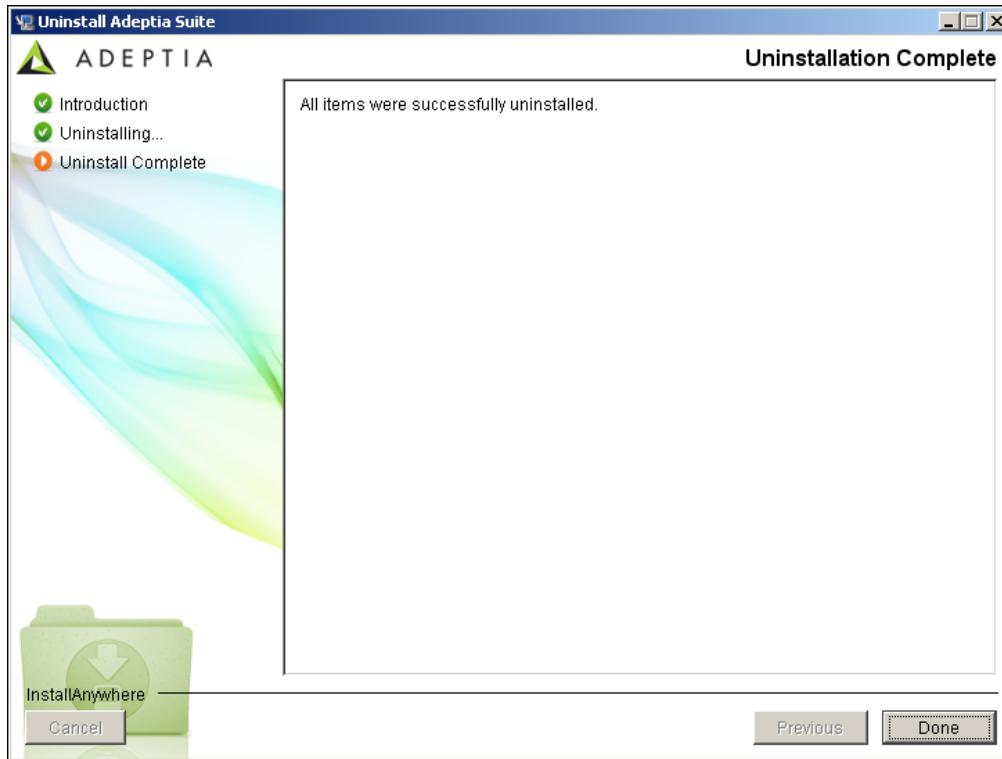


Figure 31: Uninstallation Complete

5. Click the **Done** button to exit the uninstaller.

CHANGING MEMORY SETTINGS FOR JVM

If you encounter the following error on Adeptia Kernel and WebRunner screens:

java.lang.OutOfMemoryError: PermGen space

Then you need to change some memory settings for JVM.

Steps to change memory settings for JVM

1. Stop the Kernel and the WebRunner.
2. Open the **launcher.properties** file from the **<AdeptiaServerInstallFolder>/AdeptiaServer/ServerKernel/etc/** folder and change the JVM settings for Kernel and WebRunner (see Figure 32)

#Kernel JVM parameters

KN:JVM: -Xms512M -Xmx1024M -Xrs **-XX:PermSize=64M -XX:MaxPermSize=128M**

#Webrunner JVM parameters

WB:JVM: -Xms128M -Xmx512M -Xrs **-XX:PermSize=64M -XX:MaxPermSize=128M**

#Class folder

DIR: etc;/hsqldb;/web;/webapp;/customClasses;/web/custom/;

#Separate classes

CLASSES:

Figure 32: Change Memory Settings for JVM



The JVM settings that you need to change are marked in bold. Total value (Sum of -Xmx and MaxPermSize) should not be more than the available JVM.

DISABLING JRE AUTO UPDATE

Steps to disable JRE Auto Update

1. Go to **Start > Control Panel**.
2. Double click the **Java** icon.
3. Click the **Update** tab and disable the **Check for Updated Automatically** checkbox.
4. Click the **Apply** button.
5. Click the **Advanced** tab, expand **JRE Auto-Download** and select the **Never Auto_Download** checkbox.

TROUBLESHOOTING

In case kernel or WebRunner closes automatically when you start the Kernel or the WebRunner, then it could be because of the following reasons:

- Other application is already using the port assigned to the Kernel or the WebRunner
- License of the Adeptia Suite is expired
- Other reasons

To know the exact reason, go to **<AdeptiaServerInstallFolder>/AdeptiaServer/ServerKernel/logs/applicationlogs** folder.

Open KernelApplication.log and WebRunnerApplication.log files and check the error message. In case you are using Database as a source for outbound processing, you need to use Database Event.

TABLE OF FIGURES

Figure 1: Introduction Screen	13
Figure 2: License Agreement	14
Figure 3: Choose Install Folder	15
Figure 4: Choose Install Set.....	16
Figure 5: Configure Log Database	17
Figure 6: Configure Log Database (Populated Fields).....	18
Figure 7: Configure Accelerators	19
Figure 8: Configure Web Server.....	20
Figure 9: Configure Mail	21
Figure 10: Configure Auto Startup.....	22
Figure 11: Pre-Installation Summary	23
Figure 12: Installing Adeptia Suite	24
Figure 13: Installation Complete	25
Figure 14: Starting Adeptia Suite Installation in Console Mode	26
Figure 15: Introduction.....	26
Figure 16: License Agreement	27
Figure 17: Choose Install Folder	27
Figure 18: Choose Install Set.....	28
Figure 19: Select License File	29
Figure 20: License File Path	29
Figure 21: Warning Message	29
Figure 22: Confirmation Message.....	30
Figure 23: Starting Adeptia Suite Kernel.....	32
Figure 24: Starting Adeptia Suite WebRunner.....	32
Figure 25: Check the file permission.....	33
Figure 26: Adeptia Suite Login Screen	35
Figure 27: Adeptia Suite Select Group Screen	36
Figure 28: Adeptia Suite Homepage.....	36
Figure 29: Confirm Adeptia Suite Uninstallation	38
Figure 30: Uninstalling Adeptia Suite	39
Figure 31: Uninstallation Complete	40
Figure 32: Change Memory Settings for JVM	41

INDEX

Calendar, 41
contact information, 7
contacts, 7
conventions, 6
creating edi schema, 6
EDI, 6, 9, 12, 28
event, 2
JVM, 41
Kernel, 31
Linux, 33

Other resource materials, 5
Preface, 5
pre-installation requirements, 9
pre-requisites, 12
Target, 7
target audience, 5
Uninstalling, 37
updating license, 28
Webrunner, 31